

Bearing Units and Housings

A Unit Bearing is assembled from a sealed-type insert bearing with an extended inner ring, together with a housing.

The spherical match between the bearing and the housing means a unit bearing has the function of automatic self-aligning, and compensates the axial misalignment, long axis deflection and installation bottom surface deformation caused by installation error.

The main types of unit bearings are:

- **Unit bearing with vertical housing - UCP**
- **Unit bearing with square-shape housing - UCF**
- **Unit bearing with diamond-shape housing - UCFL**
- **Unit bearing with T-shape housing - UCT**
- **Unit bearing with round-shape housing - UCFC**

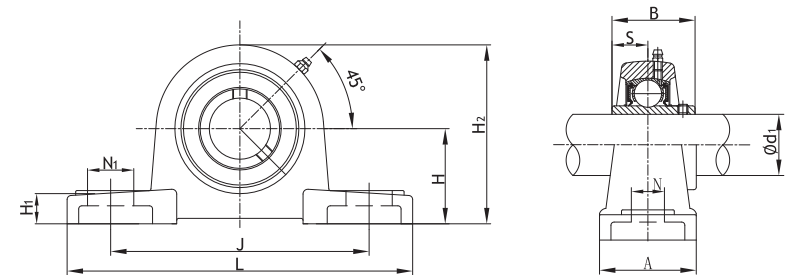
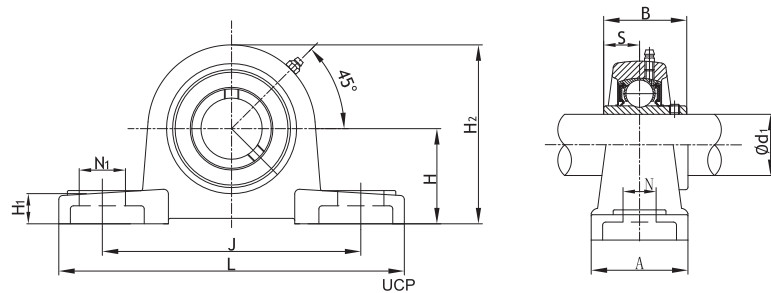
A Unit Bearing has a compact structure, convenient for assembly and disassembly, suitable for support.

Unit bearings are widely used in mining, metallurgy, agriculture, chemical industry, conveyor, etc.



Bearing unit with vertical housing – UCP

d: 12 ~ 55 mm



Bearing Units Assembly Designation	Axle diameter d1		Principal Dimensions (mm)											Bolt Designation (mm) (in.)		Bearing Designations	Basic Load Ratings (N)		Housing Designations	Weight (kg)
	(in.)	(mm)	H	L	A	J	N	N1	H1	H2	B	S	Dynamic Cr				Static Cor			
UCP201		12	30.2	127	38	95	13	19	13	60	31	12.7	M10		UC201	12800	6600	P203	0.8	
201-8	½		1.1890	5.0000	1.4961	3.7402	0.5118	0.7480	0.5118	2.3622	1.2205	0.5000	3/8		201-8				1.8	
UCP202		15	30.2	127	38	95	13	19	13	60	31	12.7	M10		UC202	12800	6600	P203	0.8	
202-10	⅝		1.1890	5.0000	1.4961	3.7402	0.5118	0.7480	0.5118	2.3622	1.2205	0.5000	3/8		202-10				1.7	
UCP203		17	30.2	127	38	95	13	19	13	60	31	12.7	M10		UC203	12800	6600	P203	0.75	
203-11	1⅛		1.1890	5.0000	1.4961	3.7402	0.5118	0.7480	0.5118	2.3622	1.2205	0.5000	3/8		203-11				1.7	
UCP204		20	33.3	127	38	95	13	19	14	65	31	12.7	M10		UC204	12800	6600	P204	0.73	
204-12	¾		1.3110	5.0000	1.4961	3.7402	0.5118	0.7480	0.5512	2.5591	1.2205	0.5000	3/8		204-12				1.6	
UCP205		25	36.5	140	38	105	13	19	15	71	34.1	14.3	M10		UC205	14000	7800	P205	0.91	
205-14	⅞														205-14					
205-15	1⅝		1.4370	5.5118	1.4961	4.1339	0.5118	0.7480	0.5906	2.7953	1.3425	0.5630	3/8		205-15				2	
205-16	1														205-16					
UCP206		30	42.9	165	48	121	17	21	17	83	38.1	15.9	M14		UC206	19400	11200	P206	1.32	
206-17	1⅛														206-17					
206-18	1 ⅝		1.6890	6.4961	1.8898	4.7638	0.6693	0.8268	0.6693	3.2677	1.5000	0.6260	9/16		206-18				2.9	
206-19	1⅜														206-19					
206-20	1 ¼														206-20					
UCP207		35	47.6	167	48	127	17	21	18	93	42.9	17.5	M14		UC207	25600	15200	P207	1.72	
207-20	1 ¼														207-20					
207-21	1⅝														207-21					
207-22	1 ⅜		1.8740	6.5748	1.8898	5.0000	0.6693	0.8268	0.7087	3.6614	1.6890	0.6890	9/16		207-22				3.8	
207-23	1⅞														207-23					
UCP208		40	49.2	184	54	137	17	21	18	98	49.2	19	M14		UC208	32600	19800	P208	2.14	
208-24	1 ½		1.9370	7.2441	2.1260	5.3937	0.6693	0.8268	0.7087	3.8583	1.9370	0.7480	9/16		208-24				4.7	
208-25	1⅞														208-25					
UCP209		45	54	190	54	146	17	21	20	106	49.2	19	M14		UC209	32700	20400	P209	2.45	
209-26	1 ⅝														209-26					
209-27	1⅞		2.1260	7.4803	2.1260	5.7480	0.6693	0.8268	0.7874	4.1732	1.9370	0.7480	9/16		209-27				5.4	
209-28	1 ¾														209-28					
UCP210		50	57.2	206	60	159	20	25	21	114	51.6	19	M16		UC210	35000	23100	P210	3.1	
210-30	1 ⅞														210-30					
210-31	1⅞		2.2520	8.1102	2.3622	6.2598	0.7874	0.9843	0.8268	4.4882	2.0315	0.7480	5/8		210-31				6.8	
210-32	2														210-32					
UCP211		55	63.5	219	60	171	20	25	23	126	55.6	22.2	M16		UC211	43300	29200	P211	3.85	
211-32	2														211-32					
211-34	2 ⅞		2.5000	8.6220	2.3622	6.7323	0.7874	0.9843	0.9055	4.9606	2.1890	0.8740	5/8		211-34				8.5	
211-35	2⅞														211-35					

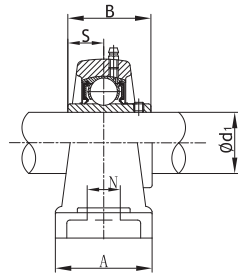
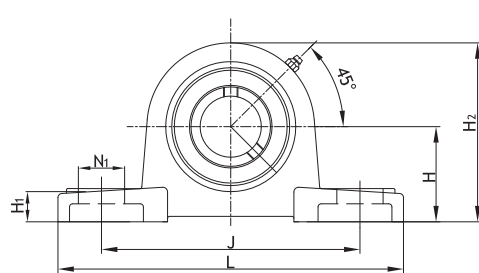
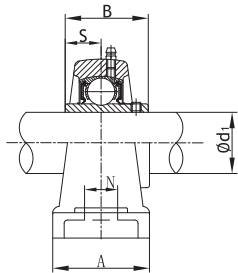
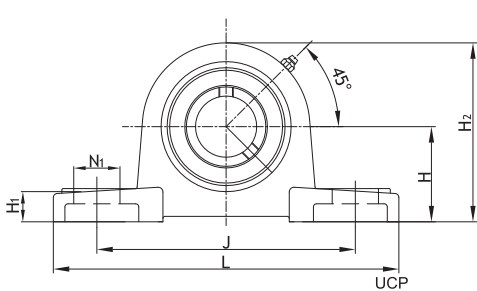
Bearing unit with vertical housing – UCP
d: 60 ~ 100 mm



Bearing Units Assembly Designation	Axle diameter d1		Principal Dimensions (mm)										Bolt Designation (mm) (in.)		Bearing Designations	Basic Load Ratings (N)		Housing Designations	Weight (kg)	
	(in.)	(mm)	H	L	A	J	N	N1	H1	H2	B	S				Dynamic Cr	Static Cor			
UCP212	2 ¼ 2 ⅝ 2 ¾ 2 ⅞	60	69.8	241	70	184	20	25	25	138	65.1	25.4	M16		UC212	47700	32900	P212	5.1	
212-36															212-36					
212-37																212-37				
212-38				2.7480	9.4882	2.7559	7.2441	0.7874	0.9843	0.9843	5.4331	2.5630	1.0000	5/8		212-38				11.2
212-39	2 ⅞														212-39					
UCP213	2 ½	65	76.2	264	70	203	25	30	27	151	65.1	25.4	M20		UC213	57200	40000	P213	6.26	
213-40			3.0000	10.3937	2.7559	7.9921	0.9843	1.1811	1.0630	5.9449	2.5630	1.0000	3/4		213-40				13.8	
UCP214	2 ⅞ 2 ¾	70	79.4	266	72	210	25	30	27	157	74.6	30.2	M20		UC214	62200	44000	P214	6.9	
214-43															214-43					
214-44				3.1260	10.4724	2.8346	8.2677	0.9843	1.1811	1.0630	6.1811	2.9370	1.1890	3/4		214-44				15.2
UCP215	2 ⅞ 2 ⅝ 2 ⅞ 3	75	82.6	275	74	217	25	30	28	163	77.8	33.3	M20		UC215	66100	49500	P215	7.62	
215-46															215-46					
215-47				3.2520	10.8268	2.9134	8.5433	0.9843	1.1811	1.1024	6.4173	3.0630	1.3110	3/4		215-47				16.5
215-48																215-48				
UCP216		80	88.9	292	78	232	25	30	30	175	82.6	33.3	M20		UC216	72500	53000	P216	9.03	
				3.5000	11.4961	3.0709	9.1339	0.9843	1.1811	1.1811	6.8898	3.2520	1.3110	3/4					19.9	
UCP217	3 ¼	85	95.2	310	83	247	25	30	32	187	85.7	34.1	M20		UC217	83500	64000	P217	11.28	
217-52				3.7480	12.2047	3.2677	9.7244	0.9843	1.1811	1.2598	7.3622	3.3740	1.3425	3/4		217-52				24.8
UCP218	3 ½	90	101.6	327	88	262	27	36	33	200	96	39.7	M22		UC218	96000	71500	P218	13.45	
218-56				4.0000	12.8740	3.4646	10.3150	1.0630	1.4173	1.2992	7.8740	3.7795	1.5630	7/8		218-56				29.6
UCP220	4	100	115	380	95	305	30	36	40	225	108	42	M24		UC220	127000	93000	P220	16.18	
220-64				4.5276	14.9606	3.7402	12.0079	1.1811	1.4173	1.5748	8.8583	4.2520	1.6535	15/16		220-64				35.6



Bearing unit with vertical housing – UCP
d: 25 ~ 60 mm

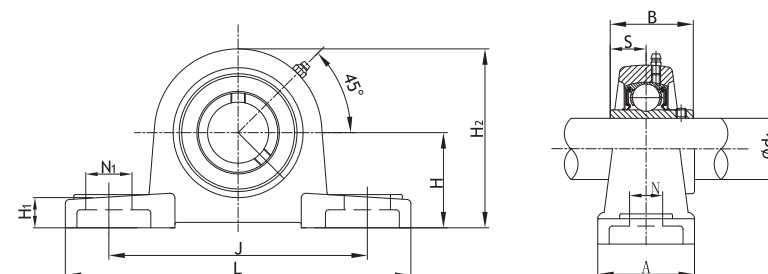
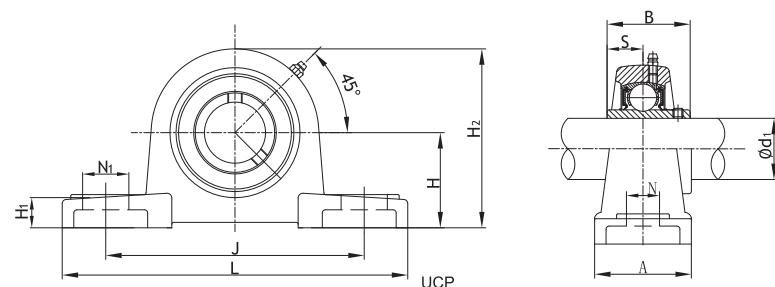


Bearing Units Assembly Designation	Axle diameter d1		Principal Dimensions (mm)										Bolt Designation (mm) (in.)		Bearing Designations	Basic Load Ratings (N)		Housing Designations	Weight (kg)
	(in.)	(mm)	H	L	A	J	N	N1	H1	H2	B	S				Dynamic Cr	Static Cor		
UCP305		25	45	175	45	132	17	20	15	85	38	15	M14		UC305	22400	11500	P305	1.52
305-13	1 3/16														305-13				
305-14	7/8		1.7717	6.8898	1.7717	5.1969	0.6693	0.7874	0.5906	3.3465	1.4961	0.5906	9/16		305-14				3.3
305-15	1 1/16														305-15				
305-16	1														305-16				
UCP306		30	50	180	50	140	17	20	18	95	43	17	M14		UC306	28100	15800	P306	1.92
306-17	1 1/16														306-17				
306-18	1 1/8		1.9685	7.0866	1.9685	5.5118	0.6693	0.7874	0.7087	3.7402	1.6929	0.6693	9/16		306-18				4.2
306-19	1 3/16														306-19				
306-20	1 1/4														306-20				
UCP307		35	56	210	56	160	17	25	20	106	48	19	M14		UC307	33400	19200	P307	2.66
307-20	1 1/4														307-20				
307-21	1 5/16		2.2047	8.2677	2.2047	6.2992	0.6693	0.9843	0.7874	4.1732	1.8898	0.7480	9/16		307-21				5.8
307-22	1 3/8														307-22				
307-23	1 7/16														307-23				
UCP308		40	60	220	60	170	17	27	22	116	52	19	M14		UC308	40700	24000	P308	3.5
308-24	1 1/2		2.3622	8.6614	2.3622	6.6929	0.6693	1.0630	0.8661	4.5669	2.0472	0.7480	9/16		308-24				7.7
308-25	1 5/16														308-25				
UCP309		45	67	245	67	190	20	30	24	129	57	22	M16		UC309	52800	31800	P309	4.68
309-26	1 5/8														309-26				
309-27	1 11/16		2.6378	9.6457	2.6378	7.4803	0.7874	1.1811	0.9449	5.0787	2.2441	0.8661	5/8		309-27				10.3
309-28	1 3/4														309-28				
UCP310		50	75	275	75	212	20	35	27	143	61	22	M16		UC310	61800	37900	P310	6.44
310-30	1 7/8														310-30				
310-31	1 15/16		2.9528	10.8268	2.9528	8.3465	0.7874	1.3780	1.0630	5.6299	2.4016	0.8661	5/8		310-31				14.2
310-32	2														310-32				
UCP311		55	80	310	80	236	20	38	30	154	66	25	M16		UC311	71600	44800	P311	7.69
311-32	2														311-32				
311-33	2 1/16		3.1496	12.2047	3.1496	9.2913	0.7874	1.4961	1.1811	6.0630	2.5984	0.9843	5/8		311-33				16.9
311-34	2 1/8														311-34				
311-35	2 3/16														311-35				
UCP312		60	85	330	85	250	25	38	32	165	71	26	M20		UC312	81800	51800	P312	9.4
312-36	2 1/4														312-36				
312-37	2 5/16		3.3465	12.9921	3.3465	9.8425	0.9843	1.4961	1.2598	6.4961	2.7953	1.0236	3/4		312-37				20.7
312-38	2 3/8														312-38				
312-39	2 7/16														312-39				



Bearing unit with vertical housing – UCP

d: 65 ~ 100 mm



Bearing Units Assembly Designation	Axle diameter d1		Principal Dimensions (mm)										Bolt Designation (mm) (in.)		Bearing Designations	Basic Load Ratings (N)		Housing Designations	Weight (kg)
	(in.)	(mm)	H	L	A	J	N	N1	H1	H2	B	S				Dynamic Cr	Static Cor		
UCP313 313-40 313-41	2 ½ 2 ⅞ ₁₆	65	90 3.5433	340 13.3858	90 3.5433	260 10.2362	25 0.9843	38 1.4961	32 1.2598	176 6.9291	75 2.9528	30 1.1811	M20 ¾		UC313 313-40 313-41	97500	60000	P313	10.7 23.54
UCP314 314-42 314-43 314-44	2 ⅝ 2 ⅞ ₁₆ 2 ¾	70	95 3.7402	360 14.1732	90 3.5433	280 11.0236	27 1.0630	40 1.5748	35 1.3780	186 7.3228	78 3.0709	33 1.2992	M22 7/8		UC314 314-42 314-43 314-44	111000	68000	P314	12.4 27.28
UCP315 315-45 315-46 315-47 315-48	2 ⅞ ₁₆ 2 ⅞ 2 ⅞ ₁₆ 3	75	100 3.9370	380 14.9606	100 3.9370	290 11.4173	27 1.0630	40 1.5748	35 1.3780	198 7.7953	82 3.2283	33.3 1.3110	M22 7/8		UC315 315-45 315-46 315-47 315-48	119000	76500	P315	14.8 32.56
UCP316 316-49 316-50 316-51	3 ⅞ ₁₆ 3 ⅞ 3 ⅞ ₁₆	80	106 4.1732	400 15.7480	110 4.3307	300 11.8110	27 1.0630	40 1.5748	35 1.3780	209 8.2283	86 3.3858	34 1.3386	M22 7/8		UC316 316-49 316-50 316-51	130000	86500	P316	18.5 40.7
UCP317 317-52 317-53 317-55	3 ¼ 3 ⅞ ₁₆ 3 ⅞ ₁₆	85	112 4.4094	420 16.5354	110 4.3307	320 12.5984	33 1.2992	45 1.7717	40 1.5748	220 8.6614	96 3.7795	40 1.5748	M28 1 ⅞ ₁₆		UC317 317-52 317-53 317-55	140000	96500	P317	20.3 44.66
UCP318 318-55 318-56	3 ⅞ ₁₆ 3 ½	90	118 4.6457	430 16.9291	110 4.3307	330 12.9921	33 1.2992	45 1.7717	40 1.5748	234 9.2126	96 3.7795	40 1.5748	M28 1 ⅞ ₁₆		UC318 318-55 318-56	151000	108000	P318	22.8 50.16
UCP319 319-58 319-59 319-60	3 ⅝ 3 ⅞ ₁₆ 3 ¾	95	125 4.9213	470 18.5039	120 4.7244	360 14.1732	36 1.4173	50 1.9685	46 1.8110	248 9.7638	103 4.0551	41 1.6142	M30 1 ⅞		UC319 319-58 319-59 319-60	159000	118000	P319	29 63.8
UCP320 320-61 320-62 320-63 320-64	3 ⅞ ₁₆ 3 ⅞ 3 ⅞ ₁₆ 4	100	140 5.5118	490 19.2913	120 4.7244	380 14.9606	36 1.4173	50 1.9685	46 1.8110	273 10.7480	108 4.2520	42 1.6535	M30 1 ⅞		UC320 320-61 320-62 320-63 320-64	174000	140000	P320	35.1 77.22



Bearing unit with vertical housing - UKP+H

d: 20 ~ 125mm

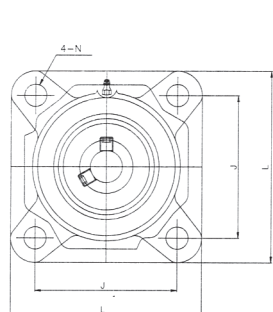


UKP+H

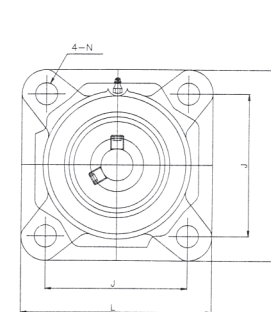
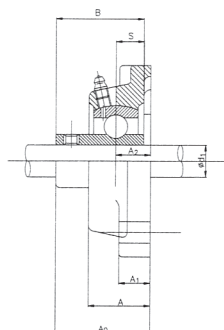
Bearing Units Assembly Designation	Axle diameter d1	Principal Dimensions (mm)									Bolt Designation (mm) (in.)		Bearing Designations	Basic Load Ratings (N)		Housing Designations	Weight (kg)
	mm	H	L	A	J	N	N1	H1	H2	B1				Dynamic Cr	Static Cor		
UKP205+H2305	20	36.5	140	38	105	13	19	15	71	35	M10		UK205+H2305	14000	7800	P205	0.94
UKP305+H2305		45	175	45	132	17	20	16	84	35	M14		UK305+H2305	21300	11200	P305	1.6
UKP206+H2306	25	42.9	165	48	121	17	21	17	83	38	M14		UK206+H2306	19400	11200	P206	1.4
UKP306+H2306		50	180	50	140	17	20	19	94	38	M14		UK306+H2306	28100	15800	P306	1.9
UKP207+H2307	30	47.6	167	48	127	17	21	18	93	43	M14		UK207+H2307	25600	15200	P207	1.78
UKP307+H2307		56	210	56	160	17	25	21	105	43	M14		UK307+H2307	33400	19200	P307	2.7
UKP208+H2308	35	49.2	184	54	137	17	21	18	98	46	M14		UK208+H2308	32600	19800	P208	2.09
UKP308+H2308		60	220	60	170	17	27	23	116	46	M14		UK308+H2308	40700	24000	P308	3.0
UKP209+H2309	40	54	190	54	146	17	21	20	106	50	M14		UK209+H2309	32700	20400	P209	2.54
UKP309+H2309		67	245	67	190	20	30	25	128	50	M16		UK309+H2309	52800	31800	P309	4.6
UKP210+H2310	45	57.2	206	60	159	20	25	21	114	55	M16		UK213+H2310	35000	23100	P210	3.22
UKP310+H2310		75	275	75	212	20	35	28	143	55	M16		UK310+H2310	61800	37900	P310	6.2
UKP211+H2311	50	63.5	219	60	171	20	25	23	126	59	M16		UK211+H2311	43300	29200	P211	3.98
UKP311+H2311		80	310	80	236	20	38	31	154	59	M16		UK311+H2311	71600	44800	P311	7.6
UKP212+H2312	55	69.8	241	70	184	20	25	25	13	62	M16		UK212+H2312	47700	32900	P212	5.13
UKP312+H2312		85	330	85	250	25	38	33	165	62	M20		UK312+H2312	81800	51800	P312	9.3
UKP213+H2313	60	76.2	264	70	203	25	30	27	151	65	M20		UK213+H2313	57200	40000	P213	6.35
UKP313+H2313		90	340	90	260	25	38	36	174	65	M20		UK313+H2313	97500	60000	P313	9.8
UKP215+H2315	65	82.6	275	74	217	25	30	28	163	73	M20		UK215+H2315	66100	49500	P215	8
UKP315+H2315		100	380	100	290	27	40	40	197	73	M22		UK315+H2315	119000	76500	P315	13.7
UKP216+H2316	70	88.9	292	78	232	25	30	30	175	78	M20		UK216+H2316	72500	53000	P216	9.5
UKP316+H2316		106	400	110	300	27	40	45	209	78	M22		UK316+H2316	130000	86500	P316	16.6
UKP217+H2317	75	95.2	310	83	247	25	30	32	187	82	M20		UK217+H2317	83500	64000	P217	11.83
UKP317+H2317		112	420	110	320	33	45	45	221	82	M27		UK317+H2317	140000	96500	P317	18.6
UKP218+H2318	80	101.6	327	88	262	27	36	33	200	86	M22		UK218+H2318	96000	71500	P218	13.68
UKP318+H2318		118	430	110	330	33	45	50	233	86	M27		UK318+H2318	151000	108000	P318	21.1
UKP319+H2319	85	125	470	120	360	36	50	50	250	90	M30		UK319+H2319	159000	118000	P319	26.5
UKP320+H2320	90	140	490	120	380	36	50	55	275	97	M30		UK320+H2320	174000	140000	P320	34.3
UKP322+H2322	100	150	520	140	400	40	55	60	295	105	M33		UK322+H2322	205000	178800	P322	42.6
UKP324+H2324	110	160	570	140	450	40	55	70	321	112	M33		UK324+H2324	207000	184800	P324	53.0
UKP326+H2326	115	180	600	140	480	40	55	80	354	121	M33		UK326+H2326	229000	214300	P326	72.4
UKP328+H2328	125	200	620	140	500	40	55	80	388	131	M33		UK328+H2328	255000	246000	P328	89.4

Bearing unit with square-shape housing – UCF

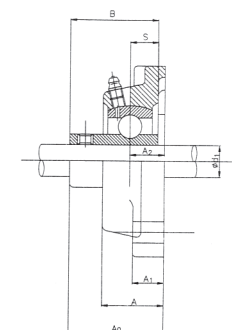
d: 12 ~ 55 mm



UCF



UCF



Bearing Units Assembly Designation	Axle diameter d1		Principal Dimensions (mm)									Bolt Designation (mm) (in.)		Bearing Designations	Basic Load Ratings (N)		Housing Designations	Weight (kg)
	(in.)	(mm)	L	A	J	N	A1	A2	A0	B	S				Dynamic Cr	Static Cor		
UCF201 201-8	1/2	12	86 3.3858	25.5 1.0039	64 2.5197	12 0.4724	11 0.4331	15 0.5906	33.3 1.3110	31 1.2205	12.7 0.5000	M10 3/8		UC201 201-8	12800	6600	F204	0.65 1.4
UCF202 202-10	5/8	15	86 3.3858	25.5 1.0039	64 2.5197	12 0.4724	11 0.4331	15 0.5906	33.3 1.3110	31 1.2205	12.7 0.5000	M10 3/8		UC202 202-10	12800	6600	F204	0.64 1.4
UCF203 203-11	11/16	17	86 3.3858	25.5 1.0039	64 2.5197	12 0.4724	11 0.4331	15 0.5906	33.3 1.3110	31 1.2205	12.7 0.5000	M10 3/8		UC203 203-11	12800	6600	F204	0.63 1.4
UCF204 204-12	3/4	20	86 3.3858	25.5 1.0039	64 2.5197	12 0.4724	11 0.4331	15 0.5906	33.3 1.3110	31 1.2205	12.7 0.5000	M10 3/8		UC204 204-12	12800	6600	F204	0.61 1.3
UCF205 205-14 205-15 205-16	7/8 15/16 1	25	95 3.7402	27 1.0630	70 2.7559	12 0.4724	13 0.5118	16 0.6299	35.8 1.4094	34.1 1.3425	14.3 0.5630	M10 3/8		UC205 205-14 205-15 205-16	14000	7800	F205	0.82 1.8
UCF206 206-17 206-18 206-19 206-20	1 1/16 1 1/8 1 1/4 1 1/2	30	108 4.2520	31 1.2205	83 3.2677	12 0.4724	13 0.5118	18 0.7087	40.2 1.5827	38.1 1.5000	15.9 0.6260	M10 3/8		UC206 206-17 206-18 206-19 206-20	19400	11200	F206	1.13 2.5
UCF207 207-20 207-21 207-22 207-23	1 1/4 1 1/2 1 3/4 1 7/8	35	117 4.6063	34 1.3386	92 3.6220	14 0.5512	15 0.5906	19 0.7480	44.4 1.7480	42.9 1.6890	17.5 0.6890	M12 1/2		UC207 207-20 207-21 207-22 207-23	25600	15200	F207	1.42 3.1
UCF208 208-24 208-25	1 1/2 1 5/8	40	130 5.1181	36 1.4173	102 4.0157	16 0.6299	15 0.5906	21 0.8268	51.2 2.0157	49.2 1.9370	19 0.7480	M14 9/16		UC208 208-24 208-25	32600	19800	F208	1.87 4.1
UCF209 209-26 209-27 209-28	1 5/8 1 11/16 1 3/4	45	137 5.3937	38 1.4961	105 4.1339	16 0.6299	16 0.6299	22 0.8661	52.2 2.0551	49.2 1.9370	19 0.7480	M14 9/16		UC209 209-26 209-27 209-28	32700	20400	F209	2.15 4.7
UCF210 210-30 210-31 210-32	1 7/8 1 15/16 2	50	143 5.6299	40 1.5748	111 4.3701	16 0.6299	16 0.6299	22 0.8661	54.6 2.1496	51.6 2.0315	19 0.7480	M14 9/16		UC210 210-30 210-31 210-32	35000	23100	F210	2.45 5.4
UCF211 211-32 211-34 211-35	2 2 1/8 2 3/8	55	162 6.3780	43 1.6929	130 5.1181	19 0.7480	18 0.7087	25 0.9843	58.4 2.2992	55.6 2.1890	22.2 0.8740	M16 5/8		UC211 211-32 211-34 211-35	43300	29200	F211	3.4 7.5



Bearing unit with square-shape housing – UCF
d: 60~100mm

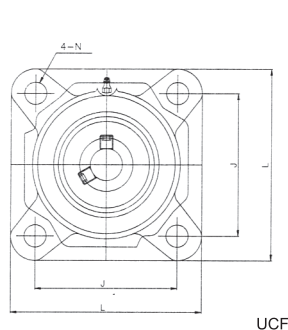


Bearing Units Assembly Designation	Axle diameter d1		Principal Dimensions (mm)									Bolt Designation (mm) (in.)		Bearing Designations	Basic Load Ratings (N)		Housing Designations	Weight (kg)
	(in.)	(mm)	L	A	J	N	A1	A2	A0	B	S				Dynamic Cr	Static Cor		
UCF212		60	175	48	143	19	18	29	68.7	65.1	25.4	M16		UC212	47700	32900	F212	4.17
212-36	2 ¼		6.8898	1.8898	5.6299	0.7480	0.7087	1.1417	2.7047	2.5630	1.0000	5/8		212-36				9.2
212-37	2 ¾													212-37				
212-38	2 ⅝													212-38				
212-39	2 ⅞													212-39				
UCF213		65	187	50	149	19	22	30	69.7	65.1	25.4	M16		UC213	57200	40000	F213	5.32
213-40	2 ½		7.3622	1.9685	5.8661	0.7480	0.8661	1.1811	2.7441	2.5630	1.0000	5/8		213-40				11.7
UCF214		70	193	54	152	19	22	31	75.4	74.6	30.2	M16		UC214	62200	44000	F214	5.92
214-43	2 11⁄16		7.5984	2.1260	5.9843	0.7480	0.8661	1.2205	2.9685	2.9370	1.1890	5/8		214-43				13
214-44	2 ¾													214-44				
UCF215		75	200	56	159	19	22	34	78.5	77.8	33.3	M16		UC215	66100	49500	F215	6.65
215-46	2 ⅞													215-46				
215-47	2 15⁄16		7.8740	2.2047	6.2598	0.7480	0.8661	1.3386	3.0906	3.0630	1.3110	5/8		215-47			14.6	
215-48	3													215-48				
UCF216		80	208	58	165	23	22	34	83.3	82.6	33.3	M20		UC216	72500	53000	F216	7.89
			8.1890	2.2835	6.4961	0.9055	0.8661	1.3386	3.2795	3.2520	1.3110	¾						17.4
UCF217		85	220	63	175	23	24	36	87.6	85.7	34.1	M20		UC217	83500	64000	F217	9.18
217-52	3 ¼		8.6614	2.4803	6.8898	0.9055	0.9449	1.4173	3.4488	3.3740	1.3425	¾		217-52				20.2
UCF218		90	235	68	187	23	24	40	96.3	96	39.7	M20		UC218	96000	71500	F218	11.2
218-56	3 ½		9.2520	2.6772	7.3622	0.9055	0.9449	1.5748	3.7913	3.7795	1.5630	¾		218-56				24.7
UCF220		100	265	70	210	27	25	44	110	108	42	M22		UC220	127000	93000	F220	12
220-64	4		10.4331	2.7559	8.2677	1.0630	0.9843	1.7323	4.3307	4.2520	1.6535	7/8		220-64				26.4

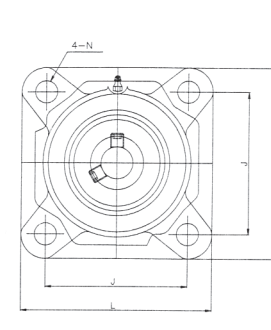
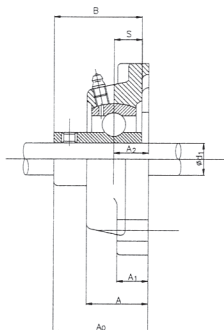


Bearing unit with square-shape housing – UCF

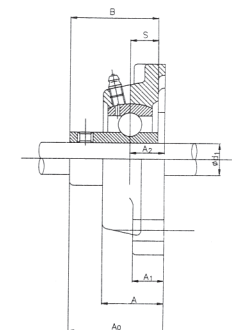
d: 25~65mm



UCF



UCF

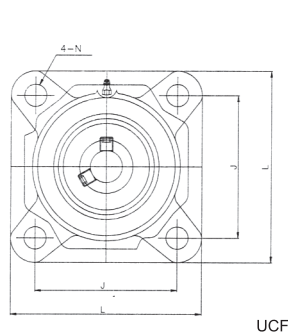


Bearing Units Assembly Designation	Axle diameter d1		Principal Dimensions (mm)									Bolt Designation (mm) (in.)		Bearing Designations	Basic Load Ratings (N)		Housing Designations	Weight (kg)
	(in.)	(mm)	L	A	J	N	A1	A2	A0	B	S				Dynamic Cr	Static Cor		
UCF305 305-14 305-15 305-16	7⁄8 15⁄16	25	110 4.3307	29 1.1417	80 3.1496	16 0.6299	13 0.5118	16 0.6299	39 1.5354	38 1.4961	15 0.5906	M14 9/16		UC305 305-14 305-15 305-16	22400	11500	F305	1.01 2.2
UCF306 306-17 306-18 306-19 306-20	1 1⁄16 1 5⁄16 1 3⁄16 1 1⁄4		30	125 4.9213	32 1.2598	95 3.7402	16 0.6299	15 0.5906	18 0.7087	44 1.7323	43 1.6929	17 0.6693	M14 9/16		UC306 306-17 306-18 306-19 306-20	28100	15800	F306
UCF307 307-20 307-21 307-22 307-23	1 1⁄4 1 5⁄16 1 3⁄8 1 7⁄16	35	135 5.3150	36 1.4173	100 3.9370	19 0.7480	16 0.6299	20 0.7874	49 1.9291	48 1.8898	19 0.7480	M16 5/8		UC307 307-20 307-21 307-22 307-23	33400	19200	F307	1.86 4.1
UCF308 308-24 308-25	1 1⁄2 1 9⁄16		40	150 5.9055	40 1.5748	112 4.4094	19 0.7480	17 0.6693	23 0.9055	56 2.2047	52 2.0472	19 0.7480	M16 5/8		UC308 308-24 308-25	40700	24000	F308
UCF309 309-26 309-27 309-28	1 5⁄8 1 11⁄16 1 3⁄4	45	160 6.2992	44 1.7323	125 4.9213	19 0.7480	18 0.7087	25 0.9843	60 2.3622	57 2.2441	22 0.8661	M16 5/8		UC309 309-26 309-27 309-28	52800	31800	F309	3.21 7.1
UCF310 310-30 310-31 310-32	1 7⁄8 1 15⁄16 2		50	175 6.8898	48 1.8898	132 5.1969	23 0.9055	19 0.7480	28 1.1024	67 2.6378	61 2.4016	22 0.8661	M20 3/4		UC310 310-30 310-31 310-32	61800	37900	F310
UCF311 311-32 311-34 311-35	2 2 1⁄8 2 3⁄16	55	185 7.2835	52 2.0472	140 5.5118	23 0.9055	20 0.7874	30 1.1811	71 2.7953	66 2.5984	25 0.9843	M20 3/4		UC311 311-32 311-34 311-35	71600	44800	F311	5.24 11.5
UCF312 312-36 312-37 312-38 312-39	2 1⁄4 2 5⁄16 2 3⁄8 2 7⁄16		60	195 7.6772	56 2.2047	150 5.9055	23 0.9055	22 0.8661	33 1.2992	78 3.0709	71 2.7953	26 1.0236	M20 3/4		UC312 312-36 312-37 312-38 312-39	81800	51800	F312
UCF313 313-40 313-41	2 1⁄2 2 9⁄16	65	208 8.1890	58 2.2835	166 6.5354	23 0.9055	22 0.8661	33 1.2992	78 3.0709	75 2.9528	30 1.1811	M20 3/4		UC313 313-40 313-41	97500	60000	F313	7.8 17.2

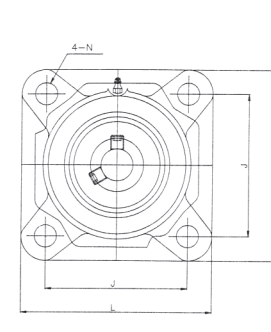
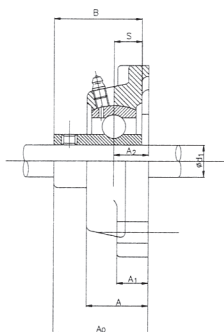


Bearing unit with square-shape housing – UCF

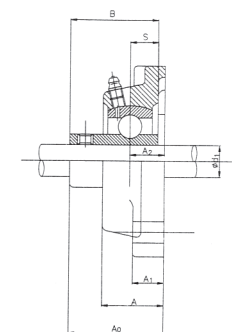
d: 70~100mm



UCF



UCF

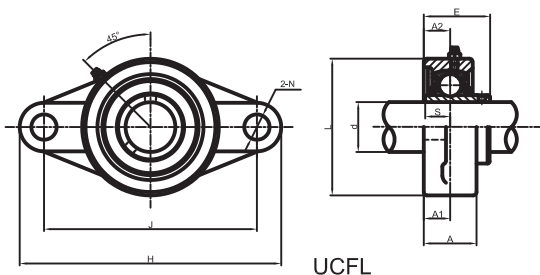


Bearing Units Assembly Designation	Axle diameter d1		Principal Dimensions (mm)										Bolt Designation (mm) (in.)		Bearing Designations	Basic Load Ratings (N)		Housing Designations	Weight (kg)
	(in.)	(mm)	L	A	J	N	A1	A2	A0	B	S	Dynamic Cr				Static Cor			
UCF314		70	226	61	178	25	25	36	81	78	33	M22		UC314	111000	68000	F314	10.1	
314-42	2 5⁄8													314-42					
314-43	2 11⁄16		8.8976	2.4016	7.0079	0.9843	0.9843	1.4173	3.1890	3.0709	1.2992	7/8		314-43				22.2	
314-44	2 3⁄4													314-44					
UCF315		75	236	66	184	25	25	39	89	82	32	M22		UC315	119000	76500	F315	11.6	
315-45	2 13⁄16													315-45					
315-46	2 7⁄8		9.2913	2.5984	7.2441	0.9843	0.9843	1.5354	3.5039	3.2283	1.2598	7/8		315-46				25.5	
315-47	2 15⁄16													315-47					
315-48	3													315-48					
UCF316		80	250	68	196	31	27	38	90	86	34	M26		UC316	130000	86500	F316	12.8	
316-49	2 1⁄16													316-49					
316-50	2 1⁄8		9.8425	2.6772	7.7165	1.2205	1.0630	1.4961	3.5433	3.3858	1.3386	1		316-50				28.2	
316-51	2 3⁄16													316-51					
UCF317		85	260	74	204	31	27	44	100	96	40	M26		UC317	140000	96500	F317	15.3	
317-52	3 1⁄4													317-52					
317-53	3 5⁄16		10.2362	2.9134	8.0315	1.2205	1.0630	1.7323	3.9370	3.7795	1.5748	1		317-53				33.7	
317-55	3 7⁄16													317-55					
UCF318		90	280	76	216	35	30	44	100	96	40	M30		UC318	151000	108000	F318	18.9	
318-55	3 7⁄16													318-55					
318-56	3 1⁄2		11.0236	2.9921	8.5039	1.3780	1.1811	1.7323	3.9370	3.7795	1.5748	1 1⁄8		318-56				41.6	
UCF319		95	290	94	228	35	30	59	121	103	41	M30		UC319	159000	118000	F319	21.6	
319-58	3 5⁄8													319-58					
319-59	3 11⁄16		11.4173	3.7008	8.9764	1.3780	1.1811	2.3228	4.7638	4.0551	1.6142	1 1⁄8		319-59				47.5	
319-60	3 3⁄4													319-60					
UCF320		100	310	94	242	38	32	59	125	108	42	M32		UC320	174000	140000	F320	25.8	
320-61	3 13⁄16													320-61					
320-62	3 7⁄8		12.2047	3.7008	9.5276	1.4961	1.2598	2.3228	4.9213	4.2520	1.6535	1 1⁄4		320-62				56.8	
320-63	3 15⁄16													320-63					
320-64	4													320-64					

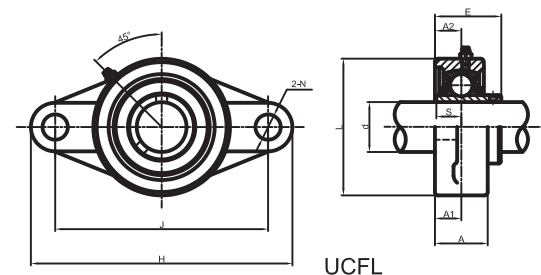


Bearing unit with diamond-shape housing – UCFL

d: 12~55mm



UCFL

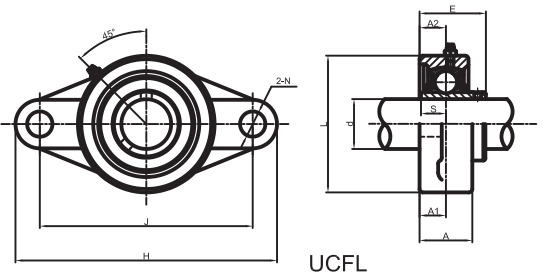
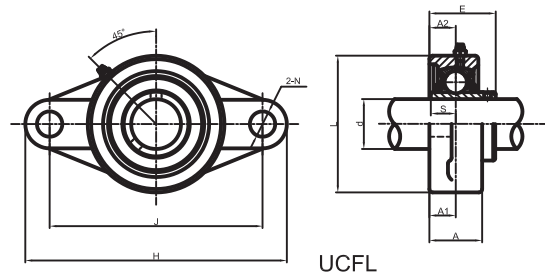


UCFL

Bearing Units Assembly Designation	Axle diameter d1		Principal Dimensions (mm)									Bolt Designation (mm) (in.)		Bearing Designations	Basic Load Ratings (N)		Housing Designations	Weight (kg)
	(in.)	(mm)	H	J	L	A1	A2	A	N	E	S				Dynamic Cr	Static Cor		
UCFL201 201-8		12	113 4.4488	90 3.5433	60 2.3622	11 0.4331	15 0.5906	25.5 1.0039	12 0.4724	33.3 1.3110	12.7 0.5000	M10 3/8		UC201 201-8	12800	6600	FL204	0.56 1.2
UCFL202 202-10		15	113 4.4488	90 3.5433	60 2.3622	11 0.4331	15 0.5906	25.5 1.0039	12 0.4724	33.3 1.3110	12.7 0.5000	M10 3/8		UC202 202-10	12800	6600	FL204	0.54 1.2
UCFL203 203-11		17	113 4.4488	90 3.5433	60 2.3622	11 0.4331	15 0.5906	25.5 1.0039	12 0.4724	33.3 1.3110	12.7 0.5000	M10 3/8		UC203 203-11	12800	6600	FL204	0.53 1.2
UCFL204 204-12		20	113 4.4488	90 3.5433	60 2.3622	11 0.4331	15 0.5906	25.5 1.0039	12 0.4724	33.3 1.3110	12.7 0.5000	M10 3/8		UC204 204-12	12800	6600	FL204	0.52 1.2
UCFL205 205-14 205-15 205-16		25	130 5.1181	99 3.8976	68 2.6772	13 0.5118	16 0.6299	27 1.0630	16 0.6299	35.8 1.4094	14.3 0.5630	M14 9/16		UC205 205-14 205-15 205-16	14000	7800	FL205	0.64 1.4
UCFL206 206-17 206-18 206-19 206-20		30	148 5.8268	117 4.6063	80 3.1496	13 0.5118	18 0.7087	31 1.2205	16 0.6299	40.2 1.5827	15.9 0.6260	M14 9/16		UC206 206-17 206-18 206-19 206-20	19400	11200	FL206	0.93 2
UCFL207 207-20 207-21 207-22 207-23		35	161 6.3386	130 5.1181	90 3.5433	15 0.5906	19 0.7480	34 1.3386	16 0.6299	44.4 1.7480	17.5 0.6890	M14 9/16		UC207 207-20 207-21 207-22 207-23	25600	15200	FL207	1.2 2.6
UCFL208 208-24 208-25		40	175 6.8898	144 5.6693	100 3.9370	15 0.5906	21 0.8268	36 1.4173	16 0.6299	51.2 2.0157	19 0.7480	M14 9/16		UC208 208-24 208-25	32600	19800	FL208	1.59 3.5
UCFL209 209-26 209-27 209-28		45	188 7.4016	148 5.8268	108 4.2520	16 0.6299	22 0.8661	38 1.4961	19 0.7480	52.2 2.0551	19 0.7480	M16 5/8		UC209 209-26 209-27 209-28	32700	20400	FL209	1.84 4.1
UCFL210 210-30 210-31 210-32		50	197 7.7559	157 6.1811	115 4.5276	16 0.6299	22 0.8661	40 1.5748	19 0.7480	54.6 2.1496	19 0.7480	M16 5/8		UC210 210-30 210-31 210-32	35000	23100	FL210	2.15 4.7
UCFL211 211-32 211-34 211-35		55	224 8.8189	184 7.2441	130 5.1181	18 0.7087	25 0.9843	43 1.6929	19 0.7480	58.4 2.2992	22.2 0.8740	M16 5/8		UC211 211-32 211-34 211-35	43300	29200	FL211	3.1 6.8



Bearing unit with diamond-shape housing – UCFL
d: 60~90 mm

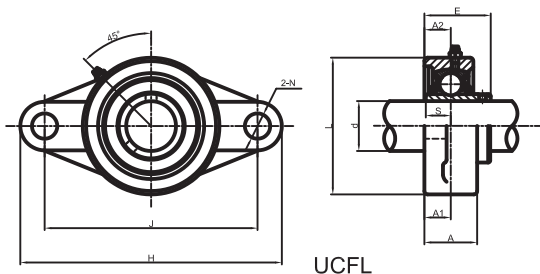


Bearing Units Assembly Designation	Axle diameter d1		Principal Dimensions (mm)									Bolt Designation (mm) (in.)		Bearing Designations	Basic Load Ratings (N)		Housing Designations	Weight (kg)
	(in.)	(mm)	H	J	L	A1	A2	A	N	E	S				Dynamic Cr	Static Cor		
UCFL212		60	250	202	140	18	29	48	23	68.7	25.4	M20		UC212	47700	32900	FL212	3.99
212-36	2 ¼													212-36				
212-37	2 ⅝		9.8425	7.9528	5.5118	0.7087	1.1417	1.8898	0.9055	2.7047	1.0000	3/4		212-37				8.8
212-38	2 ¾													212-38				
212-39	2 ⅞													212-39				
UCFL213		65	258	210	155	22	30	50	23	69.7	25.4	M20		UC213	57200	40000	FL213	4.96
213-40	2 ½		10.1575	8.2677	6.1024	0.8661	1.1811	1.9685	0.9055	2.7441	1.0000	3/4		213-40				10.9
UCFL214		70	265	216	160	22	31	54	23	75.4	30.2	M20		UC214	62200	44000	FL214	5.6
214-43	2 11/16		10.4331	8.5039	6.2992	0.8661	1.2205	2.1260	0.9055	2.9685	1.1890	3/4		214-43				12.3
214-44	2 ¾													214-44				
UCFL215		75	275	225	165	22	34	56	23	78.5	33.3	M20		UC215	66100	49500	FL215	6.21
215-46	2 ⅞													215-46				
215-47	2 15/16		10.8268	8.8583	6.4961	0.8661	1.3386	2.2047	0.9055	3.0906	1.3110	3/4		215-47				13.7
215-48	3													215-48				
UCFL216		80	290	233	180	22	34	58	25	83.3	33.3	M22		UC216	72500	53000	FL216	7.69
			11.4173	9.1732	7.0866	0.8661	1.3386	2.2835	0.9843	3.2795	1.3110	7/8						16.9
UCFL217		85	305	248	190	24	36	63	25	87.6	34.1	M22		UC217	83500	64000	FL217	9.15
217-52	3 ¼		12.0079	9.7638	7.4803	0.9449	1.4173	2.4803	0.9843	3.4488	1.3425	7/8		217-52				20.2
UCFL218		90	320	265	205	24	40	68	25	96.3	39.7	M22		UC218	96000	71500	FL218	10.95
218-56	3 ½		12.5984	10.4331	8.0709	0.9449	1.5748	2.6772	0.9843	3.7913	1.5630	7/8		218-56				24.1

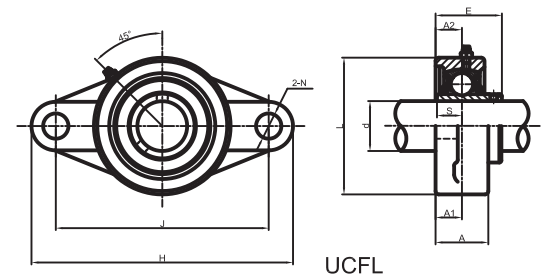


Bearing unit with diamond-shape housing – UCFL

d: 25~65mm



UCFL



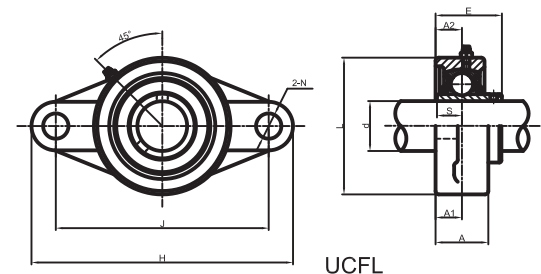
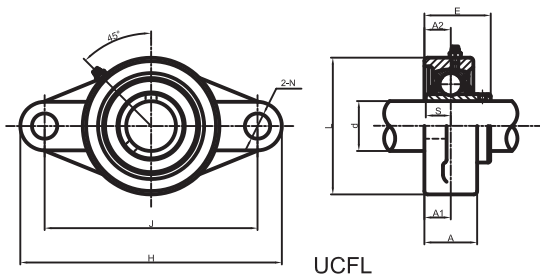
UCFL

Bearing Units Assembly Designation	Axle diameter d1		Principal Dimensions (mm)									Bolt Designation (mm) (in.)		Bearing Designations	Basic Load Ratings (N)		Housing Designations	Weight (kg)
	(in.)	(mm)	H	J	L	A1	A2	A	N	E	S				Dynamic Cr	Static Cor		
UCFL305		25	150	113	80	13	16	29	19	39	15	M16		UC305	22400	11500	FL305	1.15
305-14	7⁄8													305-14				
305-15	15⁄16		5.9055	4.4488	3.1496	0.5118	0.6299	1.1417	0.7480	1.5354	0.5906	5/8		305-15				2.5
305-16	1													305-16				
UCFL306		30	180	134	90	15	18	32	23	44	17	M20		UC306	28100	15800	FL306	1.66
306-17	1 1⁄16													306-17				
306-18	1 1⁄8		7.0866	5.2756	3.5433	0.5906	0.7087	1.2598	0.9055	1.7323	0.6693	3/4		306-18				3.6
306-19	1 3⁄16													306-19				
306-20	1 1⁄4													306-20				
UCFL307		35	185	141	100	16	20	36	23	49	19	M20		UC307	33400	19200	FL307	1.91
307-20	1 1⁄4													307-20				
307-21	1 1⁄8		7.2835	5.5512	3.9370	0.6299	0.7874	1.4173	0.9055	1.9291	0.7480	3/4		307-21				4.2
307-22	1 3⁄8													307-22				
307-23	1 7⁄16													307-23				
UCFL308		40	200	158	112	17	23	40	23	56	19	M20		UC308	40700	24000	FL308	2.5
308-24	1 1⁄2		7.8740	6.2205	4.4094	0.6693	0.9055	1.5748	0.9055	2.2047	0.7480	3/4		308-24				5.5
308-25	1 7⁄8													308-25				
UCFL309		45	230	177	125	18	25	44	25	60	22	M22		UC309	52800	31800	FL309	3.53
309-26	1 5⁄8													309-26				
309-27	1 11⁄16		9.0551	6.9685	4.9213	0.7087	0.9843	1.7323	0.9843	2.3622	0.8661	7/8		309-27				7.8
309-28	1 3⁄4													309-28				
UCFL310		50	240	187	140	19	28	48	25	67	22	M22		UC310	61800	37900	FL310	4.39
310-30	1 7⁄8													310-30				
310-31	1 15⁄16		9.4488	7.3622	5.5118	0.7480	1.1024	1.8898	0.9843	2.6378	0.8661	7/8		310-31				9.7
310-32	2													310-32				
UCFL311		55	250	198	150	20	30	52	25	71	25	M22		UC311	71600	44800	FL311	5.05
311-32	2													311-32				
311-34	2 1⁄8		9.8425	7.7953	5.9055	0.7874	1.1811	2.0472	0.9843	2.7953	0.9843	7/8		311-34				1.11
311-35	2 3⁄16													311-35				
UCFL312		60	270	212	160	22	33	56	31	78	26	M26		UC312	81800	51800	FL312	5.9
312-36	2 1⁄4													312-36				
312-37	2 5⁄16		10.6299	8.3465	6.2992	0.8661	1.2992	2.2047	1.2205	3.0709	1.0236	1		312-37				13
312-38	2 3⁄8													312-38				
312-39	2 7⁄16													312-39				
UCFL313		65	295	240	175	25	33	58	31	78	30	M26		UC313	97500	60000	FL313	8.5
313-40	2 1⁄2		11.6142	9.4488	6.8898	0.9843	1.2992	2.2835	1.2205	3.0709	1.1811	1		313-40				18.7
313-41	2 9⁄16													313-41				



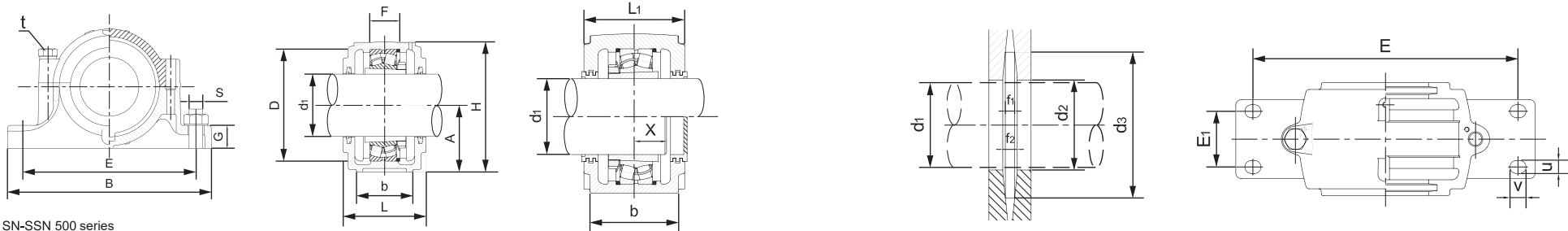
Bearing unit with diamond-shape housing – UCFL

d: 70~100mm



Bearing Units Assembly Designation	Axle diameter d1		Principal Dimensions (mm)									Bolt Designation (mm) (in.)		Bearing Designations	Basic Load Ratings (N)		Housing Designations	Weight (kg)
	(in.)	(mm)	H	J	L	A1	A2	A	N	E	S				Dynamic Cr	Static Cor		
UCFL314 314-42 314-43 314-44	2 5⁄16 2 11⁄16 2 3⁄4	70	315 12.4016	250 9.8425	185 7.2835	28 1.1024	36 1.4173	61 2.4016	35 1.3780	81 3.1890	33 1.2992	M30 1		UC314 314-42 314-43 314-44	111000	68000	FL314	9.7 21.34
UCFL315 315-45 315-46 315-47 315-48	2 13⁄16 2 7⁄8 2 15⁄16 3	75	320 12.5984	260 10.2362	195 7.6772	30 1.1811	39 1.5354	66 2.5984	35 1.3780	89 3.5039	32 1.2598	M30 1		UC315 315-45 315-46 315-47 315-48	119000	76500	FL315	11.3 24.86
UCFL316 316-49 316-50 316-51	3 1⁄16 3 5⁄8 3 3⁄16	80	355 13.9764	285 11.2205	210 8.2677	32 1.2598	38 1.4961	68 2.6772	38 1.4961	90 3.5433	34 1.3386	M32 1		UC316 316-49 316-50 316-51	130000	86500	FL316	14.4 31.68
UCFL317 317-52 317-53 317-55	3 1⁄4 3 5⁄16 3 7⁄16	85	370 14.5669	300 11.8110	220 8.6614	32 1.2598	44 1.7323	74 2.9134	38 1.4961	100 3.9370	40 1.5748	M32 1		UC317 317-52 317-53 317-55	140000	96500	FL317	16 35.2
UCFL318 318-55 318-56	3 7⁄16 3 1⁄2	90	385 15.1575	315 12.4016	235 9.2520	36 1.4173	44 1.7323	76 2.9921	38 1.4961	100 3.9370	40 1.5748	M32 1		UC318 318-55 318-56	151000	108000	FL318	19 41.8
UCFL319 319-58 319-59 319-60	3 5⁄8 3 11⁄16 3 3⁄4	95	405 15.9449	330 12.9921	250 9.8425	40 1.5748	59 2.3228	94 3.7008	41 1.6142	121 4.7638	41 1.6142	M36 1		UC319 319-58 319-59 319-60	159000	118000	FL319	24.6 54.12
UCFL320 320-61 320-62 320-63 320-64	3 13⁄16 3 7⁄8 3 15⁄16 4	100	440 17.3228	360 14.1732	270 10.6299	40 1.5748	59 2.3228	94 3.7008	44 1.7323	125 4.9213	42 1.6535	M38 1		UC320 320-61 320-62 320-63 320-64	174000	140000	FL320	29.4 64.68

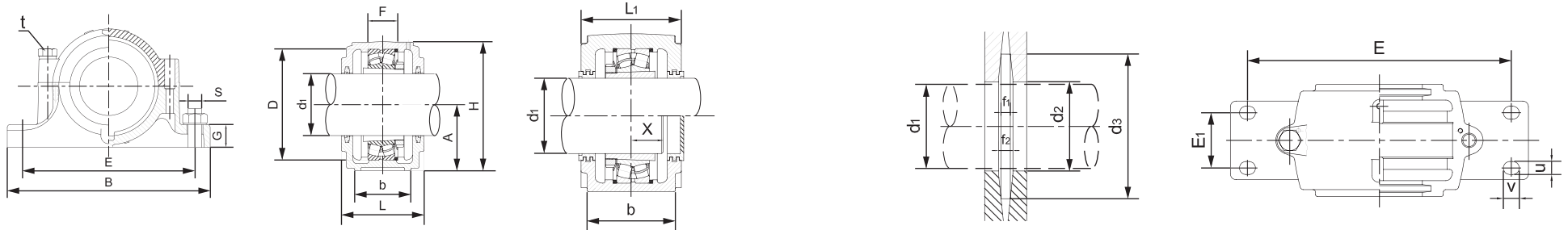




SN-SSN 500 series

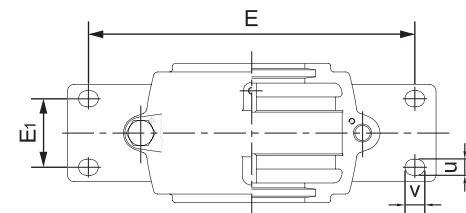
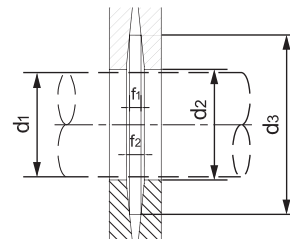
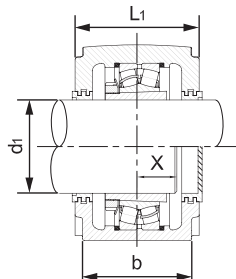
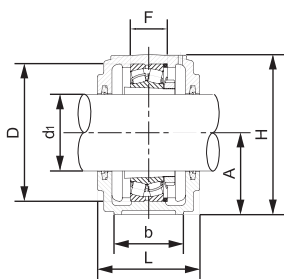
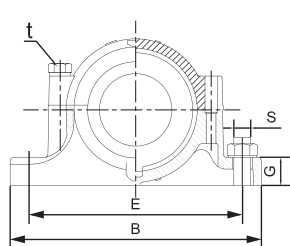
Type	Shaft Dimensions d1		Principal Dimensions (mm)														d3 H12	Principal Dimensions (mm)								Bearing Designations		Adapter Sleeve		Holding Ring		
	mm	in	D H7	B	b	G	F H13	A h13	L	H	E	E1	L1	X	d2H12 mm	t		f1 H13	f2	u	v	S 2 bolt	4 bolt	Weight SN5	SSN5	Self-Aligning Ball Bearing	Self-Aligning Roll Ball Bearings	Metric	Inch	Type	Qty.	
SN 505	20	3/4	52	165	46	22	25	40	67	75	130	25	-	22	21.5		31	M8	3	4.2	15	20	M12	M8	1.5	2.3	1205K 2205K	- 22205K	H205 H305	HE205 HE305	52x5 52x7	2 1
SN 506	25	1	62	185	52	22	30	50	77	90	150	25	-	22	26.5		38	M8	4	5.4	15	20	M12	M10	1.74	2.8	1206K 2206K	- 22206K	H206 H306	HE206 HE306	62x7 62x10	2 1
SN 507	30	1 1/8	72	185	52	22	33	50	82	95	150	25	-	24	31.5		43	M10	4	5.4	15	20	M12	M10	1.9	3.2	1207K 2207K	- 22207K	H207 H307	HE207 HE307	72x8 72x10	2 1
SN 508	35	1 1/4	80	205	60	25	33	60	85	110	170	30	-	26	36.5		48	M10	4	5.4	15	20	M12	M10	2.63	3.2	1208K 2208K	- 22208K	H208 H308	HE208 HE308	80x7.5 80x10	2 1
SN SSN 509	40	1 1/2	85	205	60	25	31	60	85	112	170	30	90	28	41.5		53	M10	4	5.4	15	20	M12	M10	2.64	3.7	1209K 2209K	- 22209K	H209 H309	HE209 HE309	85x6 85x8	2 1
SN SSN 510	45	1 3/4	90	205	60	25	33	60	90	115	170	30	95	28	46.5		58	M10	4	5.4	15	20	M12	M10	2.8	3.8	1210K 2210K	- 22210K	H210 H310	HE210 HE310	90x6.5 90x10	2 1
SN SSN 511	50	2	100	255	70	28	33	70	95	130	210	35	100	30	51.5		67	M12	5	6.9	18	23	M16	M12	4.32	6.2	1211K 2211K	- 22211K	H211 H311	HE211 HE311	100x6 100x8	2 1
SN SSN 512	55	2 1/8	110	255	70	30	38	70	105	135	210	35	110	32	56.5		72	M12	5	6.9	18	23	M16	M12	4.99	6.5	1212K 2212K	- 22212K	H212 H312	HE212 HE312	110x8 110x10	2 1
SN SSN 513	60	2 1/4	120	275	80	30	43	80	110	150	230	40	115	36	62		77	M12	5	6.8	18	23	M16	M12	5.64	8.3	1213K 2213K	- 22213K	H213 H313	HE213 HE313	120x10 120x12	2 1
SN SSN 515	65	2 1/2	130	280	80	30	41	80	115	155	230	40	120	38	67		82	M12	5	6.8	18	23	M16	M12	6.19	9.0	1215K 2215K	- 22215K	H215 H315	HE215 HE315	130x8 130x10	2 1
SN SSN 516	70	2 3/4	140	315	90	32	43	95	120	175	260	50	125	40	72		89	M16	6	8.1	22	27	M20	M12	8.17	12.1	1216K 2216K	- 22216K	H216 H316	HE216 HE316	140x8.5 140x10	2 1
SN SSN 517	75	3	150	320	90	32	46	95	125	185	260	50	130	42	77		94	M16	6	8.1	22	27	M20	M12	9.37	12.2	1217K 2217K	- 22217K	H217 H317	HE217 HE317	150x9 150x10	2 1
SN SSN 518	80	3 1/4	160	345	100	35	62.4	100	145	195	290	50	150	50	82		99	M16	6	8.1	22	27	M20	M16	11.5	15.2	1218K 2218K	- 22218K	H218 H318	HE218 HE318	160x16.2 160x11.2	2 2
SN SSN 519	85	-	170	345	100	35	53	112	140	210	290	50	152	-	87		104	M16	6	8.1	22	27	M20	M16	13.5	17.7	1219K 2219K	- 22219K	H219 H319	HE219 HE319	170x10.5 170x10	2 1
SN SSN 520	90	3 1/2	180	380	110	40	70.3	112	160	218	320	60	165	54	92		111	M20	7	9.3	26	32	M24	M16	16.3	20.5	2220K 2320K	- 22220K	H320 H2320	HE320 HE2320	180x12.1 180x10	2 1
SN SSN 522	100	4	200	410	120	45	80	125	175	240	350	70	180	60	102		125	M20	8	10.8	26	32	M24	M16	25.1	29.2	2222K 2322K	- 22222K	H322 H2322	HE322 HE2322	200x13.5 200x10	2 1
SN SSN 524	110	4 1/4	215	410	120	45	86	140	185	270	350	70	190	64	113		135	M20	8	10.7	26	34	M24	M16	27.2	33	- 22224K 23224K	- 22224K	H3124 H2324	HE3124 HE2324	215x14 215x10	2 1
SN SSN 526	115	4 1/2	230	445	130	50	90	150	190	290	380	70	195	64	118		140	M24	8	10.7	28	35	M24	M20	35.2	40.9	- 23226K 23226K	- 22226K	H3126 H2326	HE3126 HE2326	230x13 230x10	2 1
SN SSN 528	125	5	250	500	150	50	98	150	205	305	420	80	210	70	128		154	M24	9	12.2	34	44	M30	M24	43.7	48.6	- 23228K 23228K	- 22228K	H3128 H2328	HE3128 HE2328	250x15 250x10	2 1
SN SSN 530	135	5 1/4	270	530	160	60	106	160	220	325	450	90	225	76	138		164	M24	9	12.2	34	42	M30	M24	45.3	56.2	- 22230K 23230K	- 22230K	H3130 H2330	HE3130 HE2330	270x16.5 270x10	2 1
SN SSN 532	140	5 1/2	290	550	160	60	114	170	235	345	470	90	240	80	143		173	M24	10	13.7	32	44	M30	M24	50.75	68.5	- 22232K 23232K	- 22232K	H3132 H2332	HE3132 HE2332	290x17 290x10	2 1





SN-SSN 600 series

Type	Shaft Dimensions d1		Principal Dimensions (mm)															Principal Dimensions (mm)								Bearing Designations		Adapter Sleeve		Holding Ring		
			D H7	B	b	G	F H13	A h13	L	H	E	E1	L1	X	d2H12 mm	d3 H12		t	f1 H13	f2	u	v	s 2 bolt	4 bolt	Weight SN6	SSN6	Self-aligning Ball Bearing	Self-aligning Roll Ball Bearings	Metric	Inch	Type	Qty.
	mm	in																														
SN 605	20	3/4	62	185	52	22	34	50	80	90	150	25	-	27	31	31		M8	3	4.2	16	20	M12	M10	1.5	2.3	1305K 2305K	-	H305 H2305	HE305 HE2305	62X8.5 62X10	2 1
SN 606	25	1	72	185	52	22	37	50	82	95	150	25	-	27	38	38		M10	4	5.4	16	20	M12	M10	1.74	2.8	1306K 2306K	-	H306 H2306	HE306 HE2306	72X9 72X10	2 1
SN 607	30	1 1/8	80	205	60	25	41	60	90	110	170	30	-	32	43	43		M10	4	5.4	16	20	M12	M10	1.9	3.2	1307K 2307K	-	H307 H2307	HE307 HE2307	80X10 80X10	2 1
SN 608	35	1 1/4	90	205	60	25	43	60	95	115	170	30	-	34	48	48		M10	4	5.4	15	24	M12	M10	2.63	3.2	1308K 2308K	21308K H2308	H308 H2308	HE2308	90X10 90X10	2 1
SN SSN 609	40	1 1/2	100	255	70	28	46	70	105	130	210	35	110	36	53	53		M12	4	5.4	19	25	M16	M12	2.64	3.7	1309K 2309K	21309K H2309	H309 H2309	HE2309	100X10.5 100X10	2 1
SN SSN 610	45	1 3/4	110	255	70	30	50	70	115	135	210	35	120	39	58	58		M12	4	5.4	18	23	M16	M12	2.8	3.8	1310K 2310K	21310K H2310	H310 H2310	HE310	110X11.5 110X10	2 1
SN SSN 611	50	2	120	275	80	30	53	80	120	150	230	40	125	40	67	67		M12	5	6.9	20	28	M16	M12	4.32	6.2	1311K 2311K	21311K H2311	H311 H2311	HE311	120X12 120X10	2 1
SN SSN 612	55	2 1/8	130	280	80	30	56	80	125	155	230	40	130	44	72	72		M12	5	6.9	20	28	M16	M12	4.99	6.5	1312K 2312K	21312K H2312	H312 H2312	HE312	130X12.5 130X10	2 1
SN SSN 613	60	2 1/4	140	315	90	32	58	95	130	175	260	50	135	46	77	77		M16	5	6.8	22	30	M20	M12	5.64	8.3	1313K 2313K	21313K H2313	H313 H2313	HE2313	140X12.5 140X10	2 1
SN SSN 615	65	2 1/2	160	345	100	35	65	100	140	195	290	50	145	51	82	82		M16	5	6.8	23	28	M20	M16	6.19	9.0	1315K 2315K	21315K H2315	H315 H2315	HE2315	160X14 160X10	2 1
SN SSN 616	70	2 3/4	170	345	100	35	68	112	145	212	290	50	150	52	89	89		M16	6	8.1	23	30	M20	M16	8.17	12.1	1316K 2316K	21316K H2316	H316 H2316	HE316	170X14.5 170X10	2 1
SN SSN 617	75	3	180	380	110	40	70	112	155	218	320	60	160	56	94	94		M20	6	8.1	26	35	M24	M16	9.37	12.2	1317K 2317K	21317K H2317	H317 H2317	HE317	180X14.5 180X10	2 1
SN SSN 618	80	3 1/4	190	400	110	33	74	112	160	230	320	60	165	58	99	99		M20	6	8.1	27	38	M24	M16	11.5	15.2	1318K 2318K	- 22318K	H318 H2318	HE318	190X15.5 190X10	2 1
SN SSN 619	85	-	200	420	120	36	77	125	170	245	350	70	180	60	104	104		M20	6	8.1	28	36	M24	M16	13.5	17.7	1319K 2319K	- 22319K	H319 H2319	HE319	200X16 200X10	2 1
SN SSN 620	90	3 1/2	215	420	120	38	83	140	175	280	350	70	180	64	111	111		M20	7	9.3	27	33	M24	M16	16.3	20.5	1320K 2320K	- 22320K	H320 H2320	HE320	215X18 215X10	2 1
SN SSN 622	100	4	240	460	130	40	90	150	190	300	390	70	195	69	125	125		M20	8	10.8	28	32	M24	M16	25.1	29.2	1322K 2322K	- 22322K	H322 H2322	HE322	240X20 240X10	2 1
SN SSN 624	110	4 1/4	260	540	160	50	96	160	205	325	450	90	210	73	135	135		M24	8	10.7	34	42	M30	M20	27.2	33	-	22324K	H2324	HE2324	260X10	1
SN SSN 626	115	4 1/2	280	560	160	50	103	170	215	350	470	90	220	77	140	140		M24	8	10.7	34	42	M30	M20	35.2	40.9	-	22326K	H2326	HE2326	280X10	1
SN SSN 628	125	5	300	630	170	55	112	180	235	375	520	90	240	83	154	154		M30	9	12.2	34	46	M30	M20	43.7	48.6	-	22328K	H2328	HE2328	300X10	1
SN SSN 630	135	5 1/4	320	680	180	55	118	190	245	395	560	90	250	88	164	164		M30	9	12.2	38	44	M30	M20	45.3	56.2	-	22330K	H2330	HE2330	320X10	1
SN SSN 632	140	5 1/2	340	710	190	60	124	200	255	415	580	100	260	93	173	173		M30	10	13.7	40	52	M36	M24	50.75	68.5	-	22332K	H2332	HE2332	340X10	1



SNZ-SSNZ 200 series

Type	Shaft Dimension			Principal Dimensions (mm)														Lock Nut	Mounting Lock Washer	ZF Seal		Holding Ring			Type	Shaft Dimension			Principal Dimensions (mm)														Lock Nut	Mounting Lock Washer	ZF Seal		Holding Ring	
	d	d1	d2	D H7	B	b	G	F H13	A h13	L	H	E	bolt	Self-Aligning Ball Bearing	Self-Aligning Roll Ball Bearings	d1	d2			Type	Amount	d	d1			d2	D H7	B	b	G	F H13	A h13	L	H	E	bolt	Self-Aligning Ball Bearing	Self-Aligning Roll Ball Bearings	d1	d2	Type	Qty.						
SNZ 205	25	20	30	52	165	46	22	25	40	67	75	130	M12	1205 2205	- 22205	AN05	AW05	ZF5	ZF7	52x5 52x7	2 1			SNZ 305	25	20	30	60	185	52	22	34	50	80	90	150	M12	1305 2305	- -	AN05	AW05	ZF5	ZF7	62x8.5 62x10	2 1			
SNZ 206	30	25	35	62	185	52	22	30	50	77	90	150	M12	1206 2206	- 22206	AN06	AW06	ZF6	ZF8	62x7 62x10	2 1			SNZ 306	30	25	35	72	185	52	22	37	50	82	95	150	M12	1306 2306	- -	AN06	AW06	ZF6	ZF8	72x9 72x10	2 1			
SNZ 207	35	30	45	72	185	52	22	33	50	82	95	150	M12	1207 2207	- 22207	AN07	AW07	ZF7	ZF10	72x8 72x10	2 1			SNZ 307	35	30	45	80	205	60	25	41	60	90	110	170	M12	1307 2307	- -	AN07	AW07	ZF7	ZF10	80x10 80x10	2 1			
SNZ 208	40	35	50	80	205	60	25	33	60	85	110	170	M12	1208 2208	- 22208	AN08	AW08	ZF8	ZF11	80x7.5 80x10	2 1			SNZ 308	40	35	50	90	205	60	25	43	60	95	115	170	M12	1308 2308	21308 22308	AN08	AW08	ZF8	ZF11	90x10 90x10	2 1			
SNZ SSNZ 209	45	40	55	85	205	60	25	31	60	85	112	170	M12	1209 2209	- 22209	AN09	AW09	ZF9	ZF12	85x6 85x8	2 1			SNZ SSNZ 309	45	40	55	100	255	70	28	46	70	105	130	210	M16	1309 2309	21309 22309	AN09	AW09	ZF9	ZF12	100x10.5 100x10	2 1			
SNZ SSNZ 210	50	45	60	90	205	60	25	33	60	90	115	170	M12	1210 2210	- 22210	AN10	AW10	ZF10	ZF13	90x6.5 90x10	2 1			SNZ SSNZ 310	50	45	60	110	255	70	30	50	70	115	135	210	M16	1310 2310	21310 22310	AN10	AW10	ZF10	ZF13	110x11.5 110x10	2 1			
SNZ SSNZ 211	55	50	65	100	255	70	28	33	70	95	130	210	M16	1211 2211	- 22211	AN11	AW11	ZF11	ZF15	100x6 100x8	2 1			SNZ SSNZ 311	55	50	65	120	275	80	30	53	80	120	150	230	M16	1311 2311	21311 22311	AN11	AW11	ZF11	ZF15	120x12 120x10	2 1			
SNZ SSNZ 212	60	55	70	110	255	70	30	38	70	105	135	210	M16	1212 2212	- 22212	AN12	AW12	ZF12	ZF16	11x08 110x10	2 1			SNZ SSNZ 312	60	55	70	130	280	80	30	56	80	125	155	230	M16	1312 2312	21312 22312	AN12	AW12	ZF12	ZF16	130x12.5 130x10	2 1			
SNZ SSNZ 213	65	60	75	120	275	80	30	43	80	110	150	230	M16	1213 2213	- 22213	AN13	AW13	ZF13	ZF17	120x10 120x12	2 1			SNZ SSNZ 313	65	60	75	140	315	90	32	58	95	130	175	260	M20	1313 2313	21313 22313	AN13	AW13	ZF13	ZF17	140x12.5 140x10	2 1			
SNZ SSNZ 214	70	60	80	125	275	80	30	44	80	115	155	230	M16	1214 2214	- 22214	AN14	AW14	ZF14	ZF18	125x10 125x13	2 1			SNZ SSNZ 314	70	60	80	150	320	90	32	61	95	130	185	262	M20	1314 -	21314 22314	AN14	AW14	ZF14	ZF18	150x13 150x10	2 1			
SNZ SSNZ 215	75	65	85	130	280	80	30	41	80	115	155	230	M16	1215 2215	- 22215	AN15	AW15	ZF15	ZF19	130x8 130x10	2 1			SNZ SSNZ 315	75	65	85	160	345	100	35	65	100	140	195	290	M20	1315 2315	21315 22315	AN15	AW15	ZF15	ZF19	160x14 160x10	2 1			
SNZ SSNZ 216	80	70	90	140	315	90	32	43	95	120	175	260	M20	1216 2216	- 22216	AN16	AW16	ZF16	ZF20	140x8.5 140x10	2 1			SNZ SSNZ 316	80	70	90	170	345	100	35	68	112	145	212	290	M20	1316 2316	21316 22316	AN16	AW16	ZF16	ZF20	170x14.5 170x10	2 1			
SNZ SSNZ 217	85	75	95	150	320	90	32	46	95	125	185	260	M20	1217 2217	- 22217	AN17	AW17	ZF17	ZF21	150x9 150x10	2 1			SNZ SSNZ 317	85	75	95	180	380	110	40	70	112	155	218	320	M24	1317 2317	21317 22317	AN17	AW17	ZF17	ZF21	180x14.5 180x10	2 1			
SNZ SSNZ 218	90	80	100	160	345	100	35	52	100	145	195	290	M20	1218 2218	- 22218	AN18	AW18	ZF18	ZF22	160x16.2 160x11.2 160x10	2 1			SNZ SSNZ 318	90	80	100	190	400	110	33	74	112	160	230	320	M24	1318 2318	21318 22318	AN18	AW18	ZF18	ZF22	190x15.5 190x10	2 1			
SNZ SSNZ 219	95	85	110	170	345	100	35	53	112	140	210	290	M20	1219 2219	- 22219	AN19	AW19	ZF19	ZF24	170x10.5 170x10	2 1			SNZ SSNZ 319	95	85	110	200	420	120	36	77	125	170	245	350	M24	1319 2319	21319 22319	AN19	AW19	ZF19	ZF24	200x16 200x10	2 1			
SNZ SSNZ 220	100	90	115	180	380	110	40	70	135	160	218	320	M24	2220 -	22220	AN20	AW20	ZF20	ZF26	180x12.1 180x10	2 1			SNZ SSNZ 320	100	90	115	215	420	120	38	83	140	175	280	350	M24	1320 2320	21320 22320	AN20	AW20	ZF20	ZF26	215x18 215x10	2 1			
SNZ SSNZ 222	110	100	125	200	410	120	45	80	125	175	240	350	M24	2222 -	22222	AN22	AW22	ZF22	ZF28	200x13.5 200x10	2 1			SNZ SSNZ 322	110	100	125	240	460	130	40	90	150	190	300	390	M24	-	22322	AN22	AW22	ZF22	ZF28	240x20 240x10	2 1			
SNZ SSNZ 224	120	110	135	215	410	120	45	86	140	185	270	350	M24	2224 -	22224	AN24	AW24	ZF24	ZF30	215x14 215x10	2 1			SNZ SSNZ 324	120	110	135	260	540	160	50	96	160	205	325	450	M30	-	22324	AN24	AW24	ZF24	ZF30	260x10	1			
SNZ SSNZ 226	130	115	145	230	445	130	50	90	150	190	290	380	M24	2226 -	22226	AN26	AW26	ZF26	ZF33	230x13 230x10	2 1			SNZ SSNZ 326	130	115	150	280	560	160	50	103	170	215	350	470	M30	-	22326	AN26	AW26	ZF26	ZF34	280x10	1			
SNZ SSNZ 229	140	125	155	250	500	150	50	98	150	205	305	420	M30	2228 -	22228	AN28	AW28	ZF28	ZF35	250x15 250x10	2 1			SNZ SSNZ 328	140	125	160	300	630	170	55	112	180	235	375	520	M30	-	22328	AN28	AW28	ZF28	ZF36	300x10	1			
SNZ SSNZ 230	150	135	165	270	530	160	60	106	160	220	325	450	M30	22230 -	22230	AN30	AW30	ZF30	ZF37	270x16.5 270x10	2 1			SNZ SSNZ 330	150	135	170	320	680	180	55	118	190	245	395	560	M30	-	22330	AN30	AW30	ZF30	ZF38	320x10	1			
SNZ SSNZ 232	160	140	175	290	550	160	60	114	170	235	345	470	M30	22232 -	22232	AN32	AW32	ZF32	ZF39	290x17 290x10	2 1			SNZ SSNZ 332	160	140	180	340	710	190	60	124	200	255	415	580	M36	-	22332	AN32	AW32	ZF32	ZF40	340x10	1			

