

Thrust Spherical Roller Bearings

Thrust spherical roller bearings have a optimized, reinforced design can support combined axial and radial loads but mainly axial load.

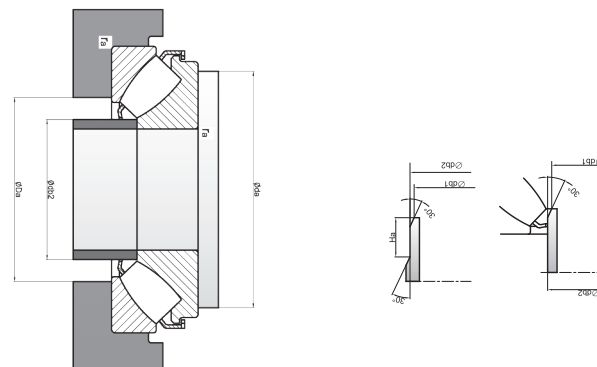
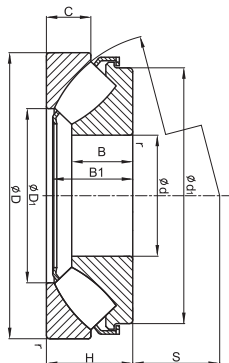
The spherical raceway is centered with the seat washer in line with the bearing center.

The rollers adopt asymmetric spherical design, which can reduce the relative sliding between the rollers and the raceway during operation. The rollers are arranged in spherical shape, with automatic self-aligning function, contact angle of approx. 45 degree.

Thrust spherical roller bearings are suitable for large mechanical equipment with high speed.



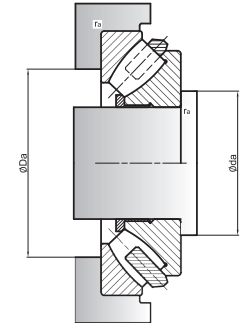
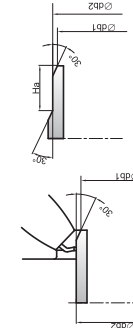
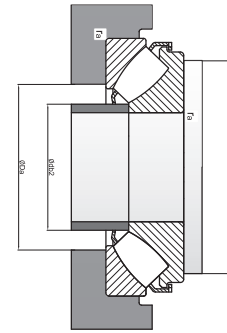
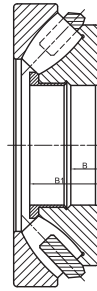
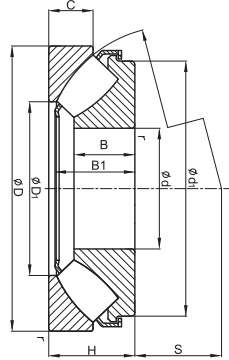
d: 60 ~ 170 mm



Principal Dimensions (mm)				Bearing Designations	Basic Load Ratings (N)		Limiting Speed (rpm)	Bearing Designations							Abutment and Fillet Dimensions			Weight (kg)		
d	D	T	r (min)		Dynamic Cr	Static Cor		d ₁	D ₁	B ₁	B ₂	C	A	d _a (min)	D _a (mix)	r _a (mix)				
60	130	42	1.5	29412E	390	915	5000	112	85.5	27	36.7	21	38	90	67	67	-	107	1.5	2.6
65	140	45	2	29413E	455	1080	4800	120	91.5	29.5	39.8	22	42	100	72	72	-	117	2	3.2
70	150	48	2	29414E	520	1250	4300	129	99	31	41	23.8	44.8	105	77.5	77.5	-	125	2	3.9
75	160	51	2	29415E	600	1430	4000	138	106	33.5	45.7	24.5	47	115	82.5	82.5	-	133	2	4.7
80	170	54	2.1	29416E	670	1630	3800	147	113	35	48.1	26.5	50	120	88	88	-	141	2	5.6
85	150	39	1.5	29317E	380	1060	4000	134	110	24.5	33.8	20	50	115	90	90	-	129	1.5	2.75
	180	58	2.1	29417E	735	1800	3600	155	121	37	51.1	28	54	130	94	94	-	151	2	6.75
90	155	39	1.5	29318E	400	1080	4000	138	115	24.5	34.5	19.5	53	120	95	95	-	134	1.5	2.85
	190	60	2.1	29418E	815	2000	3400	164	128	39	54	28.5	56	135	99	99	-	158	2	7.75
100	170	42	1.5	29320E	465	1290	3600	152	128	26.2	36.3	20.5	58	130	107	107	-	147	1.5	3.65
	210	67	3	29420E	980	2500	3000	182	142	43	57.3	32	62	150	110	110	-	175	2.5	10.5
110	190	48	2	29322E	610	1730	3200	171	140	30.3	41.7	24.8	63.8	145	117	117	-	164	2	5.3
	230	73	3	29422E	1180	3000	2800	199	156	47	64.7	34.7	69	165	120.5	129	-	193	2.5	13.5
120	210	54	2.1	29324E	765	2120	2800	188	155	34	48.2	27	70	160	128	128	-	181	2	7.35
	250	78	4	29424E	1370	3450	2600	216	171	50.5	70.3	36.5	74	180	132	142	-	209	3	17.5
130	225	58	2.1	29326E	865	2500	2600	203	166	36.7	50.6	30.1	75.6	175	138	143	-	194	2	9
	270	85	4	29426E	1560	4050	2400	234	185	54	76	40.9	81	195	142.5	153	-	227	3	22
140	240	60	2.1	29328E	980	2850	2600	216	177	38.5	54	30	82	185	148	154	-	208	2	10.5
	280	85	4	29428E	1630	4300	2400	245	195	54	75.6	41	86	205	153	162	-	236	3	23
150	215	39	1.5	29230E	408	1600	2800	200	176	24	34.3	20.5	82	180	154	154	14	193	1.5	4.3
	250	60	2.1	29330E	1000	2850	2400	223	190	38	54.9	28	87	195	158	163	-	219	2	11
150	300	90	4	29430E	1860	5100	2200	262	208	58	80.8	43.4	92	220	163	175	-	253	3	28
	270	67	3	29332E	1180	3450	2200	243	203	42	60	33	92	210	169	176	-	235	2.5	14.5
160	320	95	5	29432E	2080	5600	2000	279	224	60.5	84.3	45.5	99	235	175	189	-	270	4	32
	280	67	3	29334E	1200	3550	2200	251	215	42.2	61.1	30.5	96	220	178	188	-	245	2.5	15
170	340	103	5	29434E	2360	6550	1900	297	236	65.5	91.2	50	104	250	185	199	-	286	4	44.5



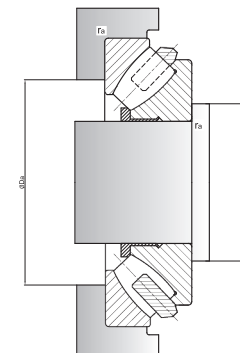
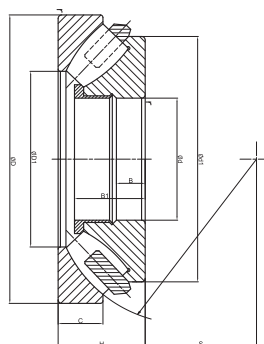
d: 180 ~ 340 mm



Principal Dimensions (mm)				Bearing Designations	Basic Load Ratings (N)		Limiting Speed (rpm)	Bearing Designations								Abutment and Fillet Dimensions			Weight (kg)	
d	D	T	r (min)		Dynamic Cr	Static Cor		d ₁	D ₁	B ₁	B ₂	C	A	d _a (min)	D _a (mix)	r _a (mix)				
180	250	42	1.5	29236E	495	2040	2600	234	208	26	36.9	22	97	210	187	187	14	226	1.5	5.8
	300	73	3	29336E	1430	4300	2000	270	227	46	66.2	35.5	103	235	189	195	-	262	2.5	19.5
	360	109	5	29436E	2600	7350	1800	315	250	69.5	96.4	53	110	265	196	210	-	304	4	52.5
190	320	78	4	29338E	1630	4750	1900	285	244	49	71.3	36	110	250	200	211	-	280	3	23.5
	380	115	5	29438E	2850	8000	1700	332	265	73	101	55.5	117	280	207	223	-	321	4	60.5
200	280	48	2	29240E	656	2650	2200	260	233	30	43.4	24	108	235	206	207	17	253	2	9.3
	340	85	4	29340E	1860	5500	1700	304	257	53.5	76.7	40	116	265	211	224	-	297	3	28.5
	400	122	5	29440E	3200	9000	1600	350	278	77	107.1	59.4	122	295	217.5	234	-	337	4	72
220	300	48	2	29244E	690	3000	2200	280	252	30	43.4	24.5	117	255	224.5	227	17	271	2	10
	360	85	4	29344E	2000	6300	1700	326	274	55	77.7	41	125	285	229	240	-	316	3	31
	420	122	6	29444E	3350	9650	1500	371	300	77	107.4	58.5	132	315	238	254	-	358	5	75
240	340	60	2.1	29248	799	3450	1800	330	283	37.5	57	30	130	290	-	-	-	308	2	16.5
	380	85	4	29348E	2040	6550	1600	345	296	54	77.8	40.5	135	305	249	259	-	336	3	35.5
	440	122	6	29448E	3400	10200	1500	391	322	76	107.1	59	142	335	258	276	-	378	5	80
260	360	60	2.1	29252	817	3650	1700	350	302	37.5	57	30	139	310	-	-	-	326	2	18.5
	420	95	5	29352E	2550	8300	1400	382	324	61	86.6	46	148	335	273	286	-	370	4	49
	480	132	6	29452E	4050	12900	1300	427	346	86	119	63	154	365	278	296	-	412	5	105
280	380	60	2.1	29256	863	4000	1700	370	323	37.5	57	30.5	150	325	-	-	-	347	2	19.5
	440	95	5	29356E	2550	8650	1400	401	343	62	86.7	45.5	158	355	293	305	-	390	4	53
	520	145	6	29456E	4900	15300	1200	464	372	95	129.9	70	166	395	300	320	-	446	5	135
300	420	73	3	29260	1070	4800	1400	405	353	42.5	69	38	162	360	-	-	-	380	2.5	30.5
	480	109	5	29360E	3100	10600	1200	434	372	70	98.9	51	168	385	313	329	-	423	4	75
	540	145	6	29460E	5000	16600	1200	485	392	95	130.3	70.5	175	415	319	340	-	465	5	140
320	440	73	3	29264	1110	5100	1400	430	372	42.7	69	38	172	380	-	-	-	400	2.5	33
	500	109	5	29364E	3350	11200	1200	454	391	68	97.8	53	180	405	332	347	-	442	4	78
	580	155	7.5	29464E	5700	19000	1100	520	422	102	139.4	74.5	191	450	344	367	-	500	6	175
340	460	73	3	29268	1130	5400	1300	445	395	43	69	37.5	183	400	-	-	-	422	2.5	33.5
	540	122	5	29368	2710	11000	1100	520	428	76	117	59.5	192	440	-	-	-	479	4	105
	620	170	7.5	29468E	6700	22400	1000	557	445	112	151.4	84	201	475	363	386	-	530	6	220



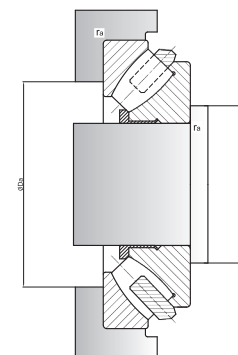
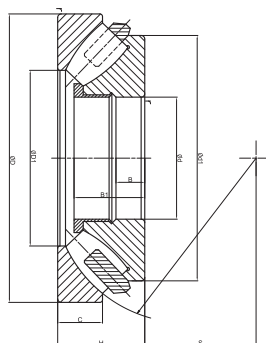
d: 360 ~ 560 mm



Principal Dimensions (mm)				Bearing Designations	Basic Load Ratings (N)		Limiting Speed (rpm)	Bearing Designations								Abutment and Fillet Dimensions			Weight (kg)	
d	D	T	r (min)		Dynamic Cr	Static Cor		d ₁	D ₁	B ₁	B ₂	C	A	d _a (min)	D _a (mix)	r _a (mix)				
360	500	85	4	29272	1460	6800	1200	485	423	49.5	81	44	195	430	-	-	-	453	3	52
	560	122	5	29372	2760	11600	1100	540	448	76	117	59.5	202	460	-	-	-	500	4	110
	640	170	7.5	29472EM	6200	21200	950	580	474	109	164	83.5	210	495	-	-	-	550	6	230
380	520	85	4	29276	1580	7650	1100	505	441	53.5	81	42	202	450	-	-	-	473	3	53
	600	132	6	29376	3340	14000	1000	580	477	83.5	127	63.5	216	495	-	-	-	535	5	140
	670	175	7.5	29476EM	6800	24000	900	610	494	114	168	87.5	222	525	-	-	-	580	6	260
400	540	85	4	29280	1610	8000	1100	526	460	53	81	42.2	212	470	-	-	-	493	3	55.5
	620	132	6	29380	3450	14600	950	596	494	83	127	64	225	510	-	-	-	550	5	150
	710	185	7.5	29480EM	7650	26500	850	645	525	120	178	89.5	234	550	-	-	-	615	6	310
420	580	95	5	29284	1990	9800	1000	564	489	61	91	46	225	500	-	-	-	525	4	75.5
	650	140	6	29384	3740	16000	900	626	520	88	135	67.5	235	535	-	-	-	580	5	170
	730	185	7.5	29484EM	7800	27500	850	665	545	121	178	90.5	244	575	-	-	-	635	6	325
440	600	95	5	29288	2070	10400	1000	585	508	61	91	46.5	235	520	-	-	-	545	4	78
	680	145	6	29388EM	5200	19300	850	626	540	91	140	70.5	249	560	-	-	-	605	5	180
	780	206	9.5	29488EM	9000	32000	750	710	577	133	199	101	257	605	-	-	-	675	8	410
460	620	95	5	29292	2070	10600	950	605	530	61.5	91	46	245	540	-	-	-	565	4	81
	710	150	6	29392	4310	19000	800	685	567	94	144	72.5	257	585	-	-	-	630	5	215
	800	206	9.5	29492EM	9300	33500	750	730	596	133	199	101.5	268	630	-	-	-	695	8	425
480	650	103	5	29296	2350	11800	900	635	556	62.5	99	53.5	259	570	-	-	-	595	4	98
	730	150	6	29396	4370	19600	800	705	591	93	144	73.5	270	610	-	-	-	655	5	220
	850	224	9.5	29496EM	9550	39000	670	770	625	147	216	108	280	660	-	-	-	735	8	550
500	670	103	5	292/500	2390	12500	900	654	574	62.5	99	53.5	268	585	-	-	-	615	4	100
	750	150	6	293/500	4490	20400	800	725	611	92.5	144	74	280	630	-	-	-	675	5	235
	870	224	9.5	294/500EM	9370	40000	670	795	648	145	216	110	290	685	-	-	-	755	8	560
530	710	109	5	292/530EM	3110	15300	850	675	608	66	105	56	285	620	-	-	-	655	4	115
	800	160	7.5	293/530	5230	23600	750	772	648	102.5	154	76	295	670	-	-	-	715	6	270
	920	236	9.5	294/530EM	10500	44000	630	840	686	152	228	116	308	725	-	-	-	800	8	650
560	750	115	5	292/560	2990	16000	800	732	644	68	111	61	302	655	-	-	-	685	4	140
	980	250	12	294/560EM	12000	51000	560	890	727	165	241	122	328	770	-	-	-	850	10	810



d: 600 ~ 1060 mm



Principal Dimensions (mm)				Bearing Designations	Basic Load Ratings (N)		Limiting Speed (rpm)	Bearing Designations								Abutment and Fillet Dimensions			Weight (kg)
d	D	T	r (min)		Dynamic Cr	Static Cor		d ₁	D ₁	B ₁	B ₂	C	A	d _a (min)	D _a (mix)	r _a (mix)			
600	800	122	5	292/600EM	3740	18600	760	688	74	117	60	321	700	-	-	-	735	4	170
	1030	258	12	294/600EM	13100	56000	940	769	170	249	128	349	815	-	-	-	900	10	845
630	850	132	6	292/630EM	4770	23600	810	723	85	127	62	338	740	-	-	-	780	5	210
	950	190	9.5	293/630EM	8450	38000	880	761	122	183	92	359	795	-	-	-	860	8	485
670	1090	280	12	294/630EM	14400	62000	995	815	181	270	137	365	860	-	-	-	950	10	1040
	900	140	6	292/670	4200	22800	880	773	84	135	73	361	790	-	-	-	825	5	255
710	1150	290	15	294/670EM	15400	68000	1045	864	188	280	141	387	905	-	-	-	1000	12	1210
	1060	212	9.5	293/710EM	9950	45500	985	855	134	205	103	404	890	-	-	-	960	8	610
750	1220	308	15	294/710EF	17600	76500	1110	917	199	298	149	415	965	-	-	-	1070	12	1500
	1000	150	6	292/750EM	6100	31000	950	858	93	144	74	409	880	-	-	-	925	5	325
800	1120	224	9.5	293/750	9370	45000	1086	910	139	216	109	415	935	-	-	-	1000	8	770
	1280	315	15	294/750EF	18700	85000	1170	964	207	305	153	436	1015	-	-	-	1120	12	1650
850	1060	155	7.5	292/800EM	6560	34500	1010	911	97	149	77	434	935	-	-	-	980	6	380
	1180	230	9.5	293/800	9950	49000	1146	965	144	222	111	440	995	-	-	-	1060	8	865
900	1360	335	15	294/800EF	20200	93000	1250	1034	213	324	165	462	1080	-	-	-	1185	12	2030
	1120	160	7.5	292/850EM	6730	36000	1060	967	95	154	82	455	980	-	-	-	1030	6	425
950	1440	354	15	294/850EF	23900	108000	1315	1077	236	342	172	507	1160	-	-	-	1270	12	2390
	1180	170	7.5	292/900EM	7820	42500	1136	1020	105	164	85	487	1045	-	-	-	1100	6	475
1000	1520	372	15	294/900EF	26700	122000	1394	1137	247	360	186	518	1215	-	-	-	1320	12	2650
	1250	180	7.5	292/950EM	8280	45500	1185	1081	111	174	88	507	1095	-	-	-	1155	6	600
1060	1600	390	15	294/950EF	28200	132000	1470	1209	255	377	191	546	1275	-	-	-	1400	12	3070
	1670	402	15	294/1000EF	31100	140000	1531	1270	262	389	190	599	1350	-	-	-	1490	12	3390
1060	1400	206	9.5	292/1060EF	10500	58500	1325	1211	125	199	100	566	1225	-	-	-	1290	8	860
	1770	426	15	294/1060EF	33400	156000	1615	1349	274	412	207	610	1410	-	-	-	1555	12	4280

