

Spherical Roller Bearings

Spherical roller bearings are self-aligning and designed for heavy combined loads and have a wide range of dimensions. Special dimension design is suitable for vibratory applications such as vibration screen or vibration exciter. Sealed spherical roller bearing are a new design of UBC spherical roller bearings.

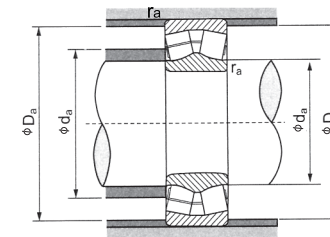
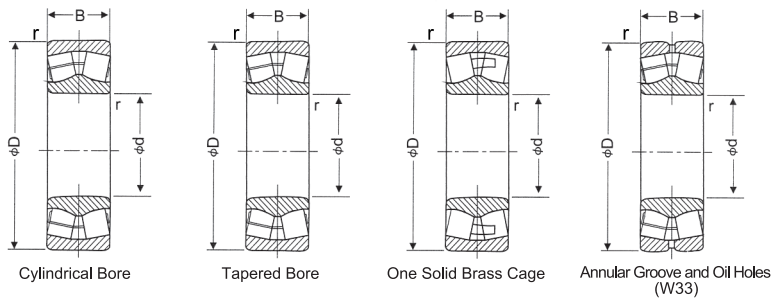
Spherical roller bearings have two rows of rollers with a common spherical raceway in the outer ring and two inner ring raceways inclined at an angle to the bearing axis. They are self-aligning and consequently resistant to misalignment between shaft and housing and for shaft deflection or bending.

The possible misalignment angle is $0\sim 2.5^{\circ}$ for spherical roller bearings. The aligning performance of sealed type spherical roller bearings will be slightly lower.

Main applications of spherical roller bearings are: paper machinery, speed reducer, gearbox, crusher, shaker's screen, printing machine, wood machinery, etc.

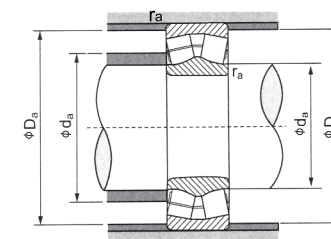
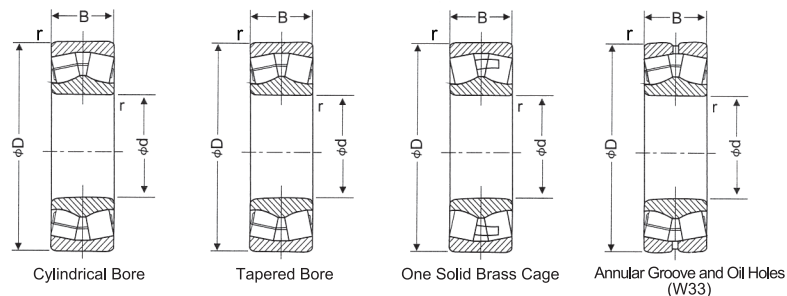


d: 20 ~ 75 mm



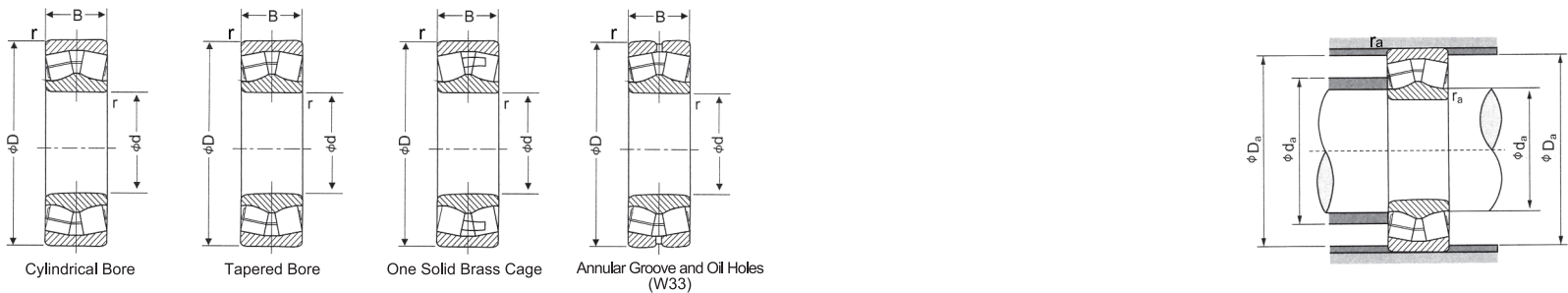
Principal Dimensions (mm)				Bearing Designations		Basic Load Ratings (N)		Limiting Speed (rpm)		Abutment and Fillet Dimensions (mm)			Weight (kg)
d	D	B	r (min)	Cylindrical Bore	Tapered Bore	Dynamic Cr	Static Cor	Grease	Oil	ds (min)	Da (max)	ra (max)	
20	52	15	1.1	21304CA/W33	21304CAK/W33	34000	33500	7300	9000	27.0	45.0	1.0	0.18
25	52	18	1	22205CA/W33	22205CAK/W33	45500	48000	7000	9000	30.5	46.5	1.0	0.19
	62	17	1.1	21305CA/W33	21305CAK/W33	46000	47500	6200	7800	32.0	53.0	1.0	0.29
30	62	20	1	22206CA/W33	22206CAK/W33	61000	65000	6000	7500	35.5	56.5	1.0	0.30
	72	19	1.1	21306CA/W33	21306CAK/W33	59500	62500	5300	6600	38.0	65.0	1.0	0.43
	72	23	1.1	22207CA/W33	22207CAK/W33	80500	88500	5000	6300	42.0	65.0	1.0	0.46
35	80	21	1.5	21307CA/W33	21307CAK/W33	69500	76000	4700	5900	44.0	71.0	1.5	0.57
	80	31	1.5	22307CA/W33	22307CAK/W33	104000	107000	6000	7700	43.5	71.5	1.5	0.78
40	80	23	1.1	22208CA/W33	22208CAK/W33	90500	102000	4500	5600	47.0	73.0	1.0	0.56
	90	23	1.5	21308CA/W33	21308CAK/W33	85500	95500	4000	5200	50.0	81.0	1.5	0.78
	90	33	1.5	22308CA/W33	22308CAK/W33	135000	151000	4000	5300	48.5	81.5	1.5	1.07
	85	23	1.1	22209CA/W33	22209CAK/W33	95500	110000	4300	5300	52.0	78.0	1.0	0.61
45	100	25	1.5	21309CA/W33	21309CAK/W33	108000	124000	3700	4600	55.0	92.0	1.5	1.05
	100	36	1.5	22309CA/W33	22309CAK/W33	165000	182000	3500	4800	53.5	91.5	1.5	1.41
	90	23	1.1	22210CA/W33	22210CAK/W33	102000	122000	3800	4800	57.0	83.0	1.0	0.65
50	110	27	2	21310CA/W33	21310CAK/W33	128000	151000	3300	4200	61.0	101.0	2.0	1.36
	110	40	2	22310CA/W33	22310CAK/W33	203000	235000	3200	4300	60.0	100.0	2.0	1.92
	100	25	1.5	22211CA/W33	22211CAK/W33	123000	144000	3400	4300	63.5	91.5	1.5	0.88
55	120	29	2	21311CA/W33	21311CAK/W33	144000	165000	3000	4100	65.0	110.0	2.0	1.70
	120	43	2	22311CA/W33	22311CAK/W33	235000	263000	3000	3800	65.0	110.0	2.0	2.40
60	110	28	1.5	22212CA/W33	22212CAK/W33	151000	179000	3200	4000	68.5	101.5	1.5	1.20
	130	31	2.1	21312CA/W33	21312CAK/W33	168000	193000	2800	3700	72.0	118.0	2.0	2.10
	130	46	2.1	22312CA/W33	22312CAK/W33	281000	330000	2800	3600	72.0	118.0	2.0	3.05
65	120	31	1.5	22213CA/W33	22213CAK/W33	177000	209000	2800	3600	73.5	111.5	1.5	1.56
	140	33	2.1	21313CA/W33	21313CAK/W33	194000	232000	2600	3400	77.0	128.0	2.0	2.60
	140	48	2.1	22313CA/W33	22313CAK/W33	300000	355000	2400	3200	77.0	128.0	2.0	3.67
70	125	31	1.5	22214CA/W33	22214CAK/W33	185000	220000	2600	3400	78.5	116.5	1.5	1.65
	150	35	2.1	21314CA/W33	21314CAK/W33	215000	260000	2400	3200	82.0	138.0	2.0	3.10
	150	51	2.1	22314CA/W33	22314CAK/W33	345000	415000	2200	3000	82.0	138.0	2.0	4.45
75	130	31	1.5	22215CA/W33	22215CAK/W33	191000	234000	2400	3200	83.5	121.5	1.5	1.74
	160	37	2.1	21315CA/W33	21315CAK/W33	245000	298000	2200	3000	87.0	148.0	2.0	3.80
	160	55	2.1	22315CA/W33	22315CAK/W33	395000	475000	2000	2800	87.0	148.0	2.0	5.44

d: 80 ~ 110 mm



Principal Dimensions (mm)				Bearing Designations		Basic Load Ratings (N)			Limiting Speed (rpm)		Abutment and Fillet Dimensions (mm)			Weight (kg)
d	D	B	r (min)	Cylindrical Bore	Tapered Bore	Dynamic Cr	Static Cor		Grease	Oil	d _a (min)	D _a (max)	r _a (max)	
80	140	33	2	22216CA/W33	22216CAK/W33	215000	269000		2200	3000	90.0	130.0	2.0	2.19
	140	44.4	2	23216CA/W33	23216CAK/W33	241000	335000		2200	2900	90.0	130.0	2.0	2.95
	170	39	2.1	21316CA/W33	21316CAK/W33	275000	339000		2100	2800	92.0	158.0	2.0	4.50
	170	58	2.1	22316CA/W33	22316CAK/W33	430000	520000		1900	2600	92.0	158.0	2.0	6.42
85	150	36	2	22217CA/W33	22217CAK/W33	255000	320000		2000	2800	95.0	140.0	2.0	2.75
	150	49.2	2	23217CA/W33	23217CAK/W33	285000	405000		2100	2700	95.0	140.0	2.0	3.78
	180	41	3	21317CA/W33	21317CAK/W33	300000	372000		2000	2600	99.0	166.0	2.5	5.30
	180	60	3	22317CA/W33	22317CAK/W33	480000	585000		1800	2400	99.0	166.0	2.5	7.46
90	160	40	2	22218CA/W33	22218CAK/W33	294000	375000		1900	2600	100.0	150.0	2.0	3.50
	160	52.4	2	23218CA/W33	23218CAK/W33	337000	482000		2100	2800	100.0	150.0	2.0	4.57
	190	43	3	21318CA/W33	21318CAK/W33	330000	410000		1900	2500	104.0	176.0	2.5	6.10
	190	64	3	22318CA/W33	22318CAK/W33	535000	660000		1800	2400	104.0	176.0	2.5	8.82
95	170	43	2.1	22219CA/W33	22219CAK/W33	335000	420000		1900	2600	107.0	158.0	2.0	4.24
	170	55.6	2.1	23219CA/W33	23219CAK/W33	360000	510000		1900	2400	107.0	158.0	2.0	5.46
	200	45	3	21319CA/W33	21319CAK/W33	362000	461000		1800	2300	109.0	186.0	2.5	7.10
	200	67	3	22319CA/W33	22319CAK/W33	585000	725000		1700	2200	109.0	186.0	2.5	10.20
100	140	30	1.1	23920CA/W33	23920CAK/W33	142000	233000		2300	3000	107.0	133.0	1.0	1.46
	150	37	1.5	23020CA/W33	23020CAK/W33	206000	325000		1800	2500	117.0	141.0	1.5	2.33
	165	52	2	23120CA/W33	23120CAK/W33	325000	500000		1700	2200	110.0	155.0	2.0	4.49
	180	46	2.1	22220CA/W33	22220CAK/W33	375000	480000		1800	2400	112.0	168.0	2.0	5.10
	180	60.3	2.1	23220CA/W33	23220CAK/W33	427000	629000		1900	2500	112.0	168.0	2.0	6.76
	215	47	3	21320CA/W33	21320CAK/W33	416000	524000		1600	2200	114.0	201.0	2.5	8.70
110	215	73	3	22320CA/W33	22320CAK/W33	700000	875000		1700	2200	114.0	201.0	2.5	13.1
	170	45	2	23022CA/W33	23022CAK/W33	298000	475000		1800	2400	120.0	160.0	2.0	3.84
	180	56	2	23122CA/W33	23122CAK/W33	390000	610000		1800	2400	120.0	170.0	2.0	5.70
	180	69	2	24122CA/W33	24122CAK/W33	455000	743000		1800	2400	120.0	170.0	2.0	6.89
	200	53	2.1	22222CA/W33	22222CAK/W33	490000	640000		1700	2200	122.0	188.0	2.0	7.36
	200	69.8	2.1	23222CA/W33	23222CAK/W33	538000	793000		1700	2200	122.0	188.0	2.0	9.6
	240	50	3	21322CA/W33	21322CAK/W33	485000	635000		1400	1900	124.0	226.0	2.5	11.6
	240	80	3	22322CA/W33	22322CAK/W33	825000	1040000		1500	1900	124.0	226.0	2.5	18.1

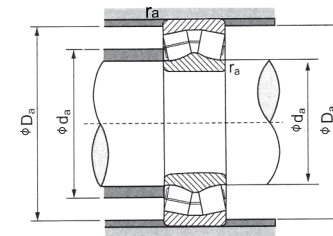
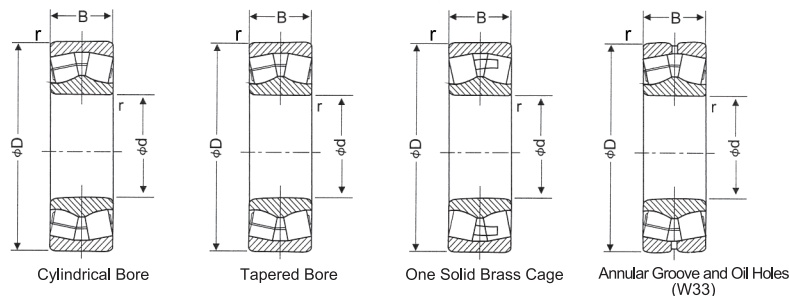
d: 120 ~ 150 mm



Principal Dimensions (mm)				Bearing Designations		Basic Load Ratings (N)			Limiting Speed (rpm)		Abutment and Fillet Dimensions (mm)			Weight (kg)
d	D	B	r (min)	Cylindrical Bore	Tapered Bore	Dynamic Cr	Static Cor		Grease	Oil	d _a (min)	D _a (max)	r _a (max)	
120	180	46	2	23024CA/W33	23024CAK/W33	310000	515000		1700	2200	130.0	170.0	2.0	4.20
	180	60	2	24024CA/W33	24024CAK30/W33	388000	683000		1700	2300	130.0	170.0	2.0	5.36
	200	62	2	23124CA/W33	23124CAK/W33	485000	720000		1600	2200	130.0	190.0	2.0	7.90
	200	80	2	24124CA/W33	24124CAK30/W33	586000	970000		1600	2200	130.0	190.0	2.0	10.0
	215	58	2.1	22224CA/W33	22224CAK/W33	565000	765000		1600	2000	132.0	203.0	2.0	9.28
	215	76	2.1	23224CA/W33	23224CAK/W33	620000	956000		1500	2100	132.0	203.0	2.0	12.0
	260	55	3	21324CA/W33	21324CAK/W33	570000	765000		1300	1600	134.0	246.0	2.5	15.3
130	260	86	3	22324CA/W33	22324CAK/W33	897000	1130000		1300	1800	134.0	246.0	2.5	22.6
	180	37	1.5	23926CA/W33	23926CAK/W33	204000	355000		1800	2300	138.5	171.5	1.5	2.87
	200	52	2	23026CA/W33	23026CAK/W33	400000	660000		1600	2000	140.0	190.0	2.0	6.14
	200	69	2	24026CA/W33	24026CAK30/W33	510000	900000		1600	2100	140.0	190.0	2.0	7.93
	210	64	2	23126CA/W33	23126CAK/W33	497000	799000		1500	2000	140.0	200.0	2.0	8.60
	210	80	2	24126CA/W33	24126CAK30/W33	604000	1030000		1500	2000	140.0	200.0	2.0	10.7
	230	64	3	22226CA/W33	22226CAK/W33	655000	915000		1400	1800	144.0	216.0	2.5	11.6
140	230	80	3	23226CA/W33	23226CAK/W33	705000	1090000		1400	1900	144.0	216.0	2.5	14.2
	280	93	4	22326CA/W33	22326CAK/W33	1050000	1340000		1200	1700	148.0	262.0	3.0	28.4
	190	37	1.5	23928CA/W33	23928CAK/W33	248000	466000		1700	2200	148.5	181.5	1.5	3.13
	210	53	2	23028CA/W33	23028CAK/W33	420000	710000		1500	1900	150.0	200.0	2.0	6.61
	210	69	2	24028CA/W33	24028CAK30/W33	510000	920000		1500	2000	150.0	200.0	2.0	8.40
	225	68	2.1	23128CA/W33	23128CAK/W33	568000	940000		1400	1900	152.0	213.0	2.0	10.5
	225	85	2.1	24128CA/W33	24128CAK30/W33	685000	1180000		1400	1900	152.0	213.0	2.0	13.0
150	250	68	3	22228CA/W33	22228CAK/W33	755000	1030000		1300	1700	154.0	236.0	2.5	13.9
	250	88	3	23228CA/W33	23228CAK/W33	814000	1290000		1300	1700	154.0	236.0	2.5	18.8
	300	102	4	22328CA/W33	22328CAK/W33	1110000	1520000		1100	1500	158.0	282.0	3.0	35.9
	210	45	2	23930CA/W33	23930CAK/W33	334000	622000		1600	2000	200.0	160.0	2.0	5.01
	225	56	2.1	23030CA/W33	23030CAK/W33	460000	790000		1300	1700	162.0	213.0	2.0	8.01
	225	75	2.1	24030CA/W33	24030CAK30/W33	580000	1060000		1400	1800	162.0	213.0	2.0	10.50
	250	80	2.1	23130CA/W33	23130CAK/W33	722000	1230000		1300	1700	162.0	238.0	2.0	16.2
150	250	100	2.1	24130CA/W33	24130CAK30/W33	888000	1520000		1300	1700	162.0	238.0	2.0	19.6
	270	73	3	22230CA/W33	22230CAK/W33	864000	1200000		1200	1600	164.0	256.0	2.5	18.9
	270	96	3	23230CA/W33	23230CAK/W33	961000	1540000		1200	1600	164.0	256.0	2.5	24.2
	320	108	4	22330CA/W33	22330CAK/W33	1270000	1740000		1000	1400	168.0	302.0	3.0	43.3

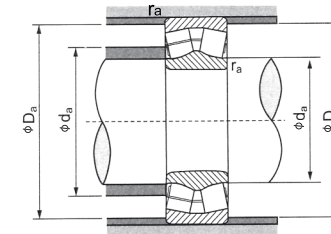
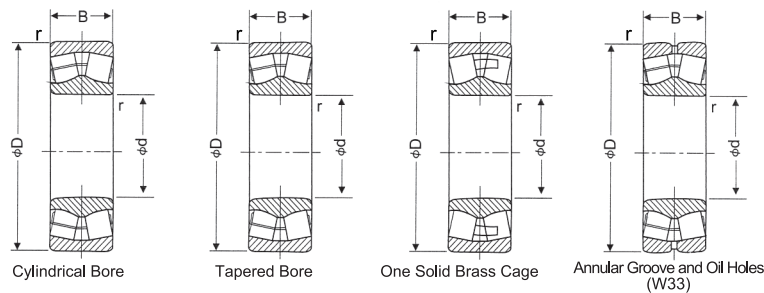


d: 160 ~ 190 mm



Principal Dimensions (mm)				Bearing Designations		Basic Load Ratings (N)		Limiting Speed (rpm)		Abutment and Fillet Dimensions (mm)			Weight (kg)
d	D	B	r (min)	Cylindrical Bore	Tapered Bore	Dynamic Cr	Static Cor	Grease	Oil	d _a (min)	D _a (max)	r _a (max)	
160	220	45	2	23932CA/W33	23932CAK/W33	341000	649000	1500	1900	170.0	210.0	2.0	5.29
	240	60	2.1	23032CA/W33	23032CAK/W33	530000	915000	1200	1300	172.0	228.0	2.0	9.74
	240	80	2.1	24032CA/W33	24032CAK30/W33	685000	128000	1300	1700	172.0	228.0	2.0	12.7
	270	86	2.1	23132CA/W33	23132CAK/W33	852000	1430000	1200	1600	172.0	258.0	2.0	20.5
	270	109	2.1	24132CA/W33	24132CAK30/W33	1040000	1810000	1200	1600	172.0	258.0	2.0	25.5
	290	80	3	22232CA/W33	22232CAK/W33	885000	1330000	1000	1400	174.0	276.0	2.5	23.7
	290	104	3	23232CA/W33	23232CAK/W33	1080000	1710000	900	1200	174.0	276.0	2.5	30.4
	340	114	4	22332CA/W33	22332CAK/W33	1400000	1950000	650	1300	178.0	322.0	3.0	51.4
170	230	45	2	23934CA/W33	23934CAK/W33	353000	691000	1400	1800	180.0	220.0	2.0	5.58
	260	67	2.1	23034CA/W33	23034CAK/W33	630000	1080000	1100	1500	182.0	248.0	2.0	13.1
	260	90	2.1	24034CA/W33	24034CAK30/W33	810000	1480000	1200	1600	182.0	248.0	2.0	17.3
	280	88	2.1	23134CA/W33	23134CAK/W33	910000	1530000	1100	1500	182.0	268.0	2.0	21.6
	280	109	2.1	24134CA/W33	24134CAK30/W33	979000	1650000	1100	1500	182.0	268.0	2.0	26.1
	310	86	4	22234CA/W33	22234CAK/W33	100000	1510000	950	1300	188.0	292.0	3.0	30.0
	310	110	4	23234CA/W33	23234CAK/W33	1240000	1970000	900	1200	188.0	292.0	3.0	37.0
	360	120	4	22334CA/W33	22334CAK/W33	1550000	2200000	900	1200	188.0	342.0	3.0	60.6
180	250	52	2	23936CA/W33	23936CAK/W33	480000	939000	1300	1700	190.0	240.0	2.0	8.10
	280	74	2.1	23036CA/W33	23036CAK/W33	773000	1330000	1000	1500	192.0	268.0	2.0	17.4
	280	100	2.1	24036CA/W33	24036CAK30/W33	960000	1760000	1100	1400	192.0	268.0	2.0	22.7
	300	96	3	23136CA/W33	23136CAK/W33	1070000	1710000	900	1200	194.0	286.0	2.5	27.9
	300	118	3	24136CA/W33	24136CAK30/W33	1180000	2040000	900	1200	194.0	286.0	2.5	33.7
	320	86	4	22236CA/W33	22236CAK/W33	1050000	1610000	950	1300	198.0	302.0	3.0	30.9
	320	112	4	23236CA/W33	23236CAK/W33	1290000	2100000	850	1100	198.0	302.0	3.0	39.4
	380	126	4	22336CA/W33	22336CAK/W33	1710000	2400000	850	1100	198.0	362.0	3.0	70.5
190	260	52	2	23938CA/W33	23938CAK/W33	487000	969000	1200	1600	200.0	250.0	2.0	8.46
	290	75	2.1	23038CA/W33	23038CAK/W33	760000	1330000	950	1300	202.0	278.0	2.0	18.4
	290	100	2.1	24038CA/W33	24038CAK30/W33	1020000	1920000	900	1200	202.0	278.0	2.0	24.6
	320	104	3	23138CA/W33	23138CAK/W33	1240000	2120000	850	1100	204.0	306.0	2.5	35.0
	320	128	3	24138CA/W33	24138CAK30/W33	1370000	2380000	850	1100	204.0	306.0	2.5	42.0
	340	92	4	22238CA/W33	22238CAK/W33	1140000	1740000	900	1200	208.0	322.0	3.0	37.2
	340	120	4	23238CA/W33	23238CAK/W33	1490000	2450000	800	1000	208.0	322.0	3.0	48.0
	400	132	5	22338CA/W33	22338CAK/W33	1870000	2670000	850	1100	212.0	378.0	4.0	81.8

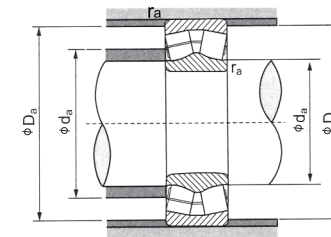
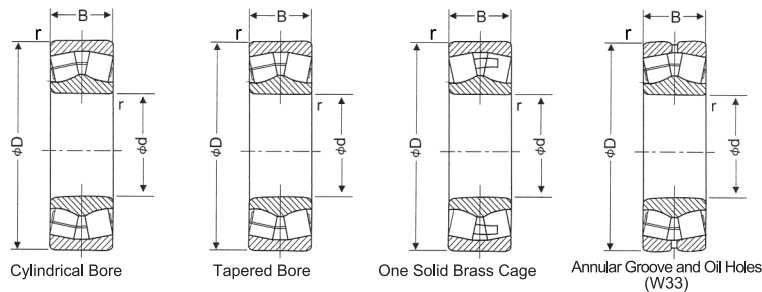
d: 200 ~ 260 mm



Principal Dimensions (mm)				Bearing Designations		Basic Load Ratings (N)			Limiting Speed (rpm)		Abutment and Fillet Dimensions (mm)			Weight (kg)
d	D	B	r (min)	Cylindrical Bore	Tapered Bore	Dynamic Cr	Static Cor		Grease	Oil	d _a (min)	D _a (max)	r _a (max)	
200	280	60	2.1	23940CA/W33	23940CAK/W33	603000	1190000		1200	1500	212.0	268.0	2.0	11.9
	310	82	2.1	23040CA/W33	23040CAK/W33	900000	1560000		950	1300	212.0	298.0	2.0	23.4
	310	109	2.1	24040CA/W33	24040CAK30/W33	1180000	2230000		850	1100	212.0	298.0	2.0	31.2
	340	112	3	23140CA/W33	23140CAK/W33	1400000	2390000		800	1000	214.0	326.0	2.5	42.7
	340	140	3	24140CA/W33	24140CAK30/W33	1600000	2820000		800	1000	214.0	326.0	2.5	52.9
	360	98	4	22240CA/W33	22240CAK/W33	1300000	1990000		850	1100	218.0	342.0	3.0	44.8
	360	128	4	23240CA/W33	23240CAK/W33	1620000	2750000		800	1000	218.0	342.0	3.0	57.7
	420	138	5	22340CA/W33	22340CAK/W33	2080000	3000000		800	1000	222.0	398.0	4.0	93.7
220	300	60	2.1	23944CA/W33	23944CAK/W33	605000	1190000		900	1200	232.0	288.0	2.0	12.6
	340	90	3	23044CA/W33	23044CAK/W33	1060000	1880000		800	1100	234.0	326.0	2.5	30.7
	340	118	3	24044CA/W33	24044CAK30/W33	1400000	2670000		800	1000	234.0	326.0	2.5	40.3
	370	120	4	23144CA/W33	23144CAK/W33	1620000	2870000		700	900	238.0	352.0	3.0	54.3
	370	150	4	24144CA/W33	24144CAK30/W33	1820000	3250000		750	950	238.0	352.0	3.0	66.3
	400	108	4	22244CA/W33	22244CAK/W33	1540000	2380000		800	1000	238.0	382.0	3.0	61.9
	400	144	4	23244CA/W33	23244CAK/W33	2100000	3500000		670	850	238.0	382.0	3.0	81.4
	460	145	5	22344CA/W33	22344CAK/W33	2430000	3600000		700	900	242.0	438.0	4.0	119
240	320	60	2.1	23948CA/W33	23948CAK/W33	6250000	1260000		850	1100	252.0	308.0	2.0	13.7
	360	92	3	23048CA/W33	23048CAK/W33	1100000	2000000		800	1000	254.0	346.0	2.5	33.5
	360	118	3	24048CA/W33	24048CAK30/W33	1430000	2800000		700	900	254.0	346.0	2.5	43.3
	400	128	4	23148CA/W33	23148CAK/W33	1880000	3350000		670	850	258.0	382.0	3.0	66.6
	400	160	4	24148CA/W33	24148CAK30/W33	2050000	3700000		670	850	258.0	382.0	3.0	81.6
	440	120	4	22248CA/W33	22248CAK/W33	1890000	2930000		700	900	258.0	422.0	3.0	82.8
	440	160	4	23248CA/W33	23248CAK/W33	2440000	4100000		630	800	258.0	422.0	3.0	109
	500	155	5	22348CA/W33	22348CAK/W33	2770000	4100000		670	850	262.0	487.0	4.0	151
260	360	75	2.1	23952CA/W33	23952CAK/W33	8950000	1780000		800	1000	272.0	348.0	2.0	24.9
	400	104	4	23052CA/W33	23052CAK/W33	1400000	2530000		750	950	278.0	382.0	3.0	52.7
	400	140	4	24052CA/W33	24052CAK30/W33	1890000	3700000		630	800	278.0	382.0	3.0	69.6
	440	144	4	23152CA/W33	23152CAK/W33	2250000	4000000		600	750	278.0	422.0	3.0	98.4
	440	180	4	24152CA/W33	24152CAK30/W33	2550000	4650000		600	750	278.0	422.0	3.0	120
	480	130	5	22252CA/W33	22252CAK/W33	2230000	3500000		670	850	282.0	458.0	4.0	113
	480	174	5	23252CA/W33	23252CAK/W33	2860000	4800000		560	700	282.0	458.0	4.0	152
	540	165	6	22352CA/W33	22352CAK/W33	3150000	4750000		600	750	288.0	512.0	5.0	228

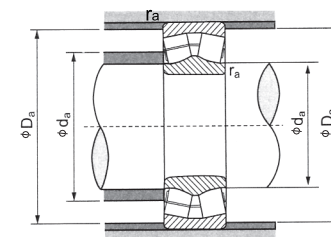
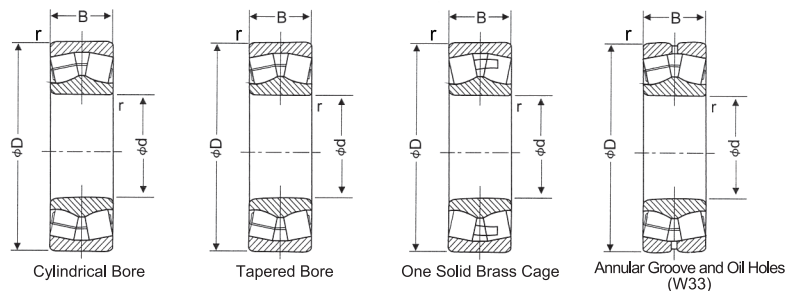


d: 280 ~ 340 mm



Principal Dimensions (mm)				Bearing Designations		Basic Load Ratings (N)				Limiting Speed (rpm)		Abutment and Fillet Dimensions (mm)			Weight (kg)
d	D	B	r (min)	Cylindrical Bore	Tapered Bore	Dynamic Cr	Static Cor			Grease	Oil	d _a (min)	D _a (max)	r _a (max)	
280	380	75	2.1	23956CA/W33	23956CAK/W33	905000	1840000			750	950	292.0	368.0	2.0	39.7
	420	106	4	23056CA/W33	23056CAK/W33	1460000	2720000			700	900	298.0	402.0	3.0	72.8
	420	140	4	24056CA/W33	24056CAK30/W33	1930000	3900000			600	750	298.0	402.0	3.0	98.7
	460	146	5	23156CA/W33	23156CAK/W33	2310000	4200000			560	700	302.0	438.0	4.0	129
	460	180	5	24156CA/W33	24156CAK30/W33	2580000	4800000			560	700	302.0	438.0	4.0	160
	500	130	5	22256CA/W33	22256CAK/W33	2320000	3700000			630	800	302.0	478.0	4.0	144
	500	176	5	23256CA/W33	23256CAK/W33	3000000	5200000			530	670	302.0	478.0	4.0	196
	580	175	6	22356CA/W33	22356CAK/W33	3550000	5450000			560	700	308.0	552.0	5.0	279
300	420	90	3	23960CA/W33	23960CAK/W33	1250000	2520000			670	850	314.0	406.0	2.5	23.7
	460	118	4	23060CA/W33	23060CAK/W33	1800000	3300000			630	800	318.0	442.0	3.0	48.9
	460	160	4	24060CA/W33	24060CAK30/W33	2420000	4850000			560	700	318.0	442.0	3.0	65.7
	500	160	5	23160CA/W33	23160CAK/W33	2650000	4750000			530	670	322.0	478.0	4.0	92
	500	200	5	24160CA/W33	24160CAK30/W33	3200000	6100000			530	670	322.0	478.0	4.0	113
	540	140	5	22260CA/W33	22260CAK/W33	2670000	4300000			600	750	322.0	518.0	4.0	107
	540	192	5	23260CA/W33	23260CAK/W33	3550000	6250000			480	600	322.0	518.0	4.0	142
	620	185	7.5	22360CA/W33	22360CAK/W33	3950000	6050000			520	650	336.0	584.0	6.0	187
320	440	90	3	23964CA/W33	23964CAK/W33	1270000	2610000			630	800	334.0	426.0	2.5	41.8
	480	121	4	23064CA/W33	23064CAK/W33	1860000	3500000			600	750	338.0	462.0	3.0	78.6
	480	160	4	24064CA/W33	24064CAK30/W33	2470000	5100000			530	670	338.0	462.0	3.0	104
	540	176	5	23164CA/W33	23164CAK/W33	3150000	5700000			480	600	342.0	518.0	4.0	168
	540	218	5	24164CA/W33	24164CAK30/W33	3650000	6900000			480	600	342.0	518.0	4.0	206
	580	150	5	22264CA/W33	22264CAK/W33	3050000	4900000			550	680	342.0	558.0	4.0	179
	580	208	5	23264CA/W33	23264CAK/W33	4050000	7200000			450	560	342.0	558.0	4.0	244
	620	185	7.5	22364CA/W33	22364CAK/W33	4550000	8000000			500	620	368.0	592.0	5.0	224
340	460	90	3	23968CA/W33	23968CAK/W33	1320000	2790000			600	750	354.0	446.0	2.5	44.1
	520	133	5	23068CA/W33	23068CAK/W33	2270000	4300000			560	700	362.0	498.0	4.0	104
	520	180	5	24068CA/W33	24068CAK30/W33	2960000	6050000			480	600	362.0	498.0	4.0	141
	580	190	5	23168CA/W33	23168CAK/W33	3700000	6750000			450	560	362.0	558.0	4.0	212
	580	243	5	24168CA/W33	24168CAK30/W33	4350000	8300000			450	560	362.0	558.0	4.0	267
	620	165	6	22268CA/W33	22268CAK/W33	4050000	6850000			500	620	368.0	592.0	5.0	224
	620	224	6	23268CA/W33	23268CAK/W33	4550000	8000000			400	530	368.0	592.0	5.0	299

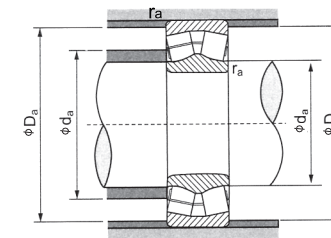
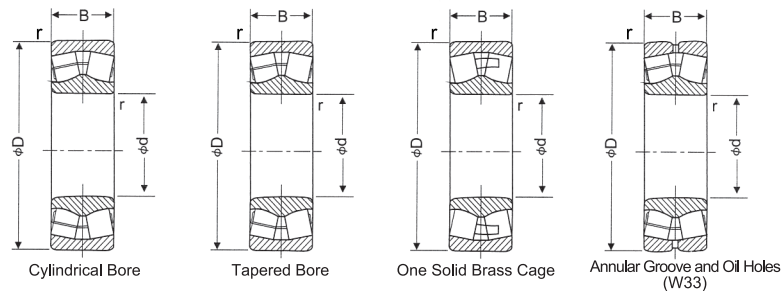
d: 360 ~ 440 mm



Principal Dimensions (mm)				Bearing Designations		Basic Load Ratings (N)				Limiting Speed (rpm)		Abutment and Fillet Dimensions (mm)			Weight (kg)
d	D	B	r (min)	Cylindrical Bore	Tapered Bore	Dynamic Cr	Static Cor			Grease	Oil	d _a (min)	D _a (max)	r _a (max)	
360	480	90	3	23972CA/W33	23972CAK/W33	1360000	2960000			600	750	374.0	466.0	2.5	46
	540	134	5	23072CA/W33	23072CAK/W33	2320000	4500000			430	670	382.0	518.0	4.0	110
	540	180	5	24072CA/W33	24072CAK30/W33	3050000	6350000			450	560	382.0	518.0	4.0	148
	600	192	5	23172CA/W33	23172CAK/W33	3850000	7250000			430	530	382.0	578.0	4.0	225
	600	243	5	24172CA/W33	24172CAK30/W33	4500000	8750000			430	530	382.0	578.0	4.0	279
	650	232	6	23272CA/W33	23272CAK/W33	5000000	9000000			380	500	388.0	622.0	5.0	342
380	520	106	4	23976CA/W33	23976CAK/W33	1720000	3650000			530	670	398.0	502.0	3.0	68.2
	560	135	5	23076CA/W33	23076CAK/W33	2370000	4700000			500	630	402.0	538.0	4.0	116
	560	180	5	24076CA/W33	24076CAK30/W33	3100000	6650000			450	560	402.0	538.0	4.0	154
	620	194	5	23176CA/W33	23176CAK/W33	3900000	7400000			400	500	402.0	598.0	4.0	236
	620	243	5	24176CA/W33	24176CAK30/W33	4650000	9300000			400	500	402.0	598.0	4.0	290
	680	240	6	23276CA/W33	23276CAK/W33	5400000	9800000			360	480	408.0	652.0	5.0	383
400	540	106	4	23980CA/W33	23980CAK/W33	1780000	3900000			500	630	418.0	522.0	3.0	71.4
	600	148	5	23080CA/W33	23080CAK/W33	2800000	5500000			480	600	422.0	578.0	4.0	151
	600	200	5	24080CA/W33	24080CAK30/W33	3600000	7650000			400	500	422.0	578.0	4.0	204
	650	220	6	23180CA/W33	23180CAK/W33	4150000	7900000			380	480	428.0	622.0	5.0	266
	650	250	6	24180CA/W33	24180CAK30/W33	4950000	9850000			380	480	428.0	622.0	5.0	330
	720	256	6	23280CA/W33	23280CAK/W33	6100000	11100000			340	450	428.0	692.0	5.0	461
420	560	106	4	23984CA/W33	23984CAK/W33	1810000	4000000			480	600	438.0	542.0	3.0	74.4
	620	150	5	23084CA/W33	23084CAK/W33	2910000	5850000			450	560	442.0	598.0	4.0	158
	620	200	5	24084CA/W33	24084CAK30/W33	3700000	8000000			380	480	442.0	598.0	4.0	212
	700	224	6	23184CA/W33	23184CAK/W33	4900000	9250000			360	450	448.0	672.0	5.0	354
	700	280	6	24184CA/W33	24184CAK30/W33	6000000	12000000			360	450	448.0	672.0	5.0	437
	760	272	7.5	23284CA/W33	23284CAK/W33	6750000	12500000			330	430	456.0	724.0	6.0	548
440	600	118	4	23988CA/W33	23988CAK/W33	2230000	4900000			450	560	458.0	582.0	3.0	101
	650	157	6	23088CA/W33	23088CAK/W33	3100000	6250000			430	530	468.0	622.0	5.0	183
	650	212	6	24088CA/W33	24088CAK30/W33	4150000	9000000			360	450	468.0	622.0	5.0	247
	720	226	6	23188CA/W33	23188CAK/W33	5150000	10000000			340	430	468.0	692.0	5.0	371
	720	280	6	24188CA/W33	24188CAK30/W33	6150000	12700000			340	430	468.0	692.0	5.0	460
	790	280	7.5	23288CA/W33	23288CAK/W33	7200000	13300000			320	400	476.0	754.0	6.0	605



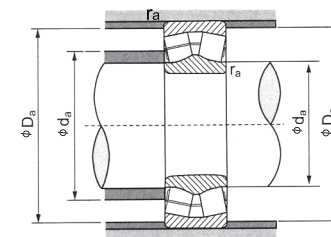
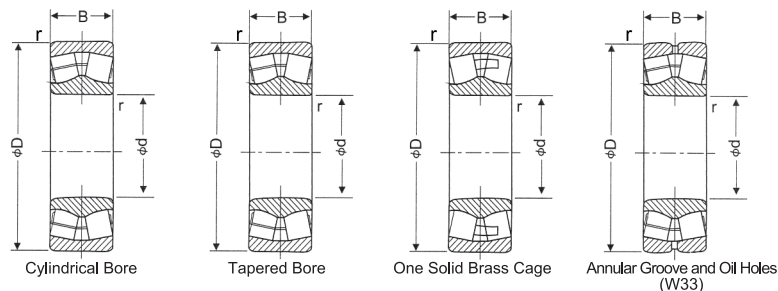
d: 460 ~ 600 mm



Principal Dimensions (mm)				Bearing Designations		Basic Load Ratings (N)				Limiting Speed (rpm)		Abutment and Fillet Dimensions (mm)			Weight (kg)
d	D	B	r (min)	Cylindrical Bore	Tapered Bore	Dynamic Cr	Static Cor			Grease	Oil	d _a (min)	D _a (max)	r _a (max)	
460	620	118	4	23992CA/W33	23992CAK/W33	2220000	4900000			430	530	478.0	602.0	3.0	105
	680	163	6	23092CA/W33	23092CAK/W33	3400000	68500000			400	500	488.0	652.0	5.0	208
	680	218	6	24092CA/W33	24092CAK30/W33	4400000	9650000			340	430	488.0	652.0	5.0	279
	760	240	7.5	23192CA/W33	23192CAK/W33	5750000	11200000			320	400	496.0	724.0	6.0	446
	760	300	7.5	24192CA/W33	24192CAK30/W33	6800000	13900000			320	400	496.0	724.0	6.0	550
480	830	296	7.5	23292CA/W33	23292CAK/W33	7650000	14500000			300	380	496.0	794.0	6.0	709
	650	128	5	23996CA/W33	23996CAK/W33	2390000	5450000			430	530	502.0	628.0	4.0	126
	700	165	6	23096CA/W33	23096CAK/W33	3500000	7250000			380	480	508.0	672.0	5.0	217
	700	218	6	24096CA/W33	24096CAK30/W33	4550000	10100000			340	430	508.0	672.0	5.0	290
	790	248	7.5	23196CA/W33	23196CAK/W33	6100000	12000000			300	380	516.0	754.0	6.0	495
500	790	308	7.5	24196CA/W33	24196CAK30/W33	7150000	14800000			300	380	516.0	754.0	6.0	625
	870	310	7.5	23296CA/W33	23296CAK/W33	8150000	15400000			280	360	516.0	834.0	6.0	820
	670	128	5	239/500CA/W33	239/500CAK/W33	2450000	5700000			400	500	522.0	648.0	4.0	130
	720	167	6	230/500CA/W33	230/500CAK/W33	3650000	7650000			380	480	528.0	692.0	5.0	228
	720	218	6	240/500CA/W33	240/500CAK30/W33	4650000	10500000			320	400	528.0	692.0	5.0	330
530	830	264	7.5	231/500CA/W33	231/500CAK/W33	6700000	13000000			280	360	536.0	794.0	6.0	584
	830	325	7.5	241/500CA/W33	241/500CAK30/W33	7950000	16200000			280	360	536.0	794.0	6.0	718
	920	336	7.5	232/500CA/W33	232/500CAK/W33	9500000	17800000			260	340	536.0	884.0	6.0	1000
	710	136	5	239/530CA/W33	239/530CAK/W33	2940000	6800000			360	450	552.0	688.0	4.0	156
	780	185	6	230/530CA/W33	230/530CAK/W33	4500000	9450000			370	450	558.0	752.0	5.0	308
560	780	250	6	240/530CA/W33	240/530CAK30/W33	5600000	12500000			300	370	558.0	752.0	5.0	417
	870	272	7.5	231/530CA/W33	231/530CAK/W33	7350000	14600000			260	340	566.0	834.0	6.0	640
	980	355	9.5	232/530CA/W33	232/530CAK/W33	11000000	21000000			220	300	574.0	936.0	8.0	1215
	750	140	5	239/560CA/W33	239/560CAK/W33	3050000	6950000			340	430	582.0	728.0	4.0	177
	820	195	6	230/560CA/W33	230/560CAK/W33	5050000	10800000			340	430	588.0	792.0	5.0	359
600	820	258	6	240/560CA/W33	240/560CAK30/W33	6000000	13500000			280	350	588.0	792.0	5.0	468
	920	280	7.5	231/560CA/W33	231/560CAK/W33	7950000	15800000			240	320	596.0	884.0	6.0	732
	1030	365	9.5	232/560CA/W33	232/560CAK/W33	11500000	22000000			190	270	612.0	992.0	8.0	1390
	800	150	5	239/600CA/W33	239/600CAK/W33	3450000	8050000			320	400	622.0	778.0	4.0	214
	870	200	6	230/600CA/W33	230/600CAK/W33	5500000	12000000			320	400	628.0	842.0	5.0	408
600	870	272	6	240/600CA/W33	240/600CAK30/W33	6500000	14900000			260	330	628.0	842.0	5.0	551
	980	300	7.5	231/600CA/W33	231/600CAK/W33	8700000	17500000			200	280	636.0	944.0	6.0	887
	1090	388	9.5	232/600CA/W33	232/600CAK/W33	12900000	25100000			160	240	654.0	1048	8.0	1640



d: 630 ~ 950 mm



Principal Dimensions (mm)				Bearing Designations		Basic Load Ratings (N)				Limiting Speed (rpm)		Abutment and Fillet Dimensions (mm)			Weight (kg)
d	D	B	r (min)	Cylindrical Bore	Tapered Bore	Dynamic Cr	Static Cor			Grease	Oil	d_a (min)	D_a (max)	r_a (max)	
630	850	165	6	239/630CA/W33	239/630CAK/W33	4150000	9700000			280	360	658.0	822.0	5.0	273
	920	212	7.5	230/630CA/W33	230/630CAK/W33	6000000	13100000			290	380	666.0	884.0	6.0	487
	1030	315	7.5	231/630CA/W33	231/630CAK/W33	9700000	19800000			190	260	666.0	994.0	6.0	1070
670	900	170	6	239/670CA/W33	239/670CAK/W33	4450000	10500000			260	340	698.0	872.0	5.0	316
	980	230	7.5	230/670CA/W33	230/670CAK/W33	6950000	15300000			270	340	706.0	944.0	6.0	603
	980	308	7.5	240/670CA/W33	240/670CAK30/W33	8650000	19800000			230	290	706.0	944.0	6.0	801
	1090	336	7.5	231/670CA/W33	231/670CAK/W33	11000000	23000000			180	240	706.0	1054	6.0	1260
710	950	180	6	239/710CA/W33	239/710CAK/W33	5000000	12100000			240	320	738.0	922.0	5.0	369
	1030	236	7.5	230/710CA/W33	230/710CAK/W33	7450000	16600000			250	320	746.0	994.0	6.0	676
	1150	345	9.5	231/710CA/W33	231/710CAK/W33	12100000	25300000			170	220	754.0	1106	8.0	1432
750	1000	185	6	239/750CA/W33	239/750CAK/W33	5400000	13200000			220	300	778.0	972.0	5.0	417
	1090	250	7.5	230/750CA/W33	230/750CAK/W33	8400000	18900000			230	300	786.0	1054	6.0	803
	1220	365	9.5	231/750CA/W33	231/750CAK/W33	13000000	27700000			150	190	794.0	1176	8.0	1710
800	1060	195	6	239/800CA/W33	239/800CAK/W33	5850000	14500000			200	280	825.0	1032	5.0	470
	1150	258	7.5	230/800CA/W33	230/800CAK/W33	8800000	20900000			210	270	836.0	1114	6.0	910
	1150	345	7.5	240/800CA/W33	240/800CAK30/W33	11100000	27200000			200	250	836.0	1114	6.0	1200
	1280	375	9.5	231/800CA/W33	231/800CAK/W33	14400000	31000000			160	210	844.0	1236	8.0	1910
850	1120	200	6	239/850CA/W33	239/850CAK/W33	6200000	15600000			190	260	878.0	1092	5.0	546
	1220	272	7.5	230/850CA/W33	230/850CAK/W33	9750000	22500000			190	240	886.0	1184	6.0	1059
900	1180	206	6	239/900CA/W33	239/900CAK/W33	6700000	17000000			180	240	928.0	1152	5.0	618
	1280	280	7.5	230/900CA/W33	230/900CAK/W33	10500000	25400000			180	220	936.0	1244	5.0	1200
950	1250	224	7.5	239/950CA/W33	239/950CAK/W33	7750000	19900000			170	220	986.0	1214	6.0	763
	1360	300	7.5	230/950CA/W33	230/950CAK/W33	11600000	27200000			160	200	986.0	1324	6.0	1450

