

Bearing Units and Housings

Unit bearing is assembled by a sealed-type insert bearing with extended inner ring, together with a housing.

The spherical match between the bearing and the housing makes unit bearing has function of automatic self-aligning, and compensates the axial misalignment, long axis deflection and installation bottom surface deformation caused by installation error.

The main types of unit bearings are:

- Unit bearing with vertical housing - UCP
- Unit bearing with square-shape housing - UCF
- Unit bearing with diamond-shape housing - UCFL
- Unit bearing with T-shape housing - UCT
- Unit bearing with round-shape housing - UCFC

Unit bearing has compact structure, convenient for assembly and disassembly, suitable for supporting.

Unit bearings are widely used in mining, metallurgy, agriculture, chemical industry, conveyor, etc.



Unit bearing with vertical housing – UCP

d: 12 ~ 60 mm

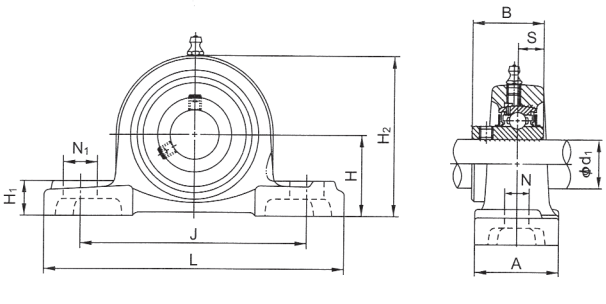
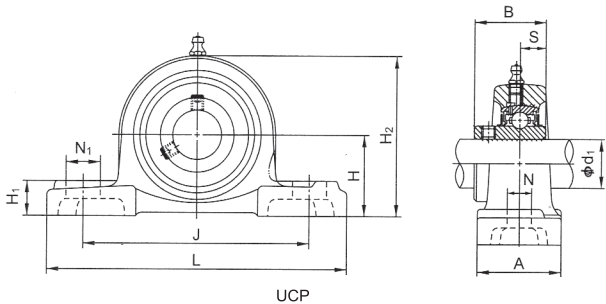


UCP

| d ₁ (mm) | Bearing Units Assembly Designation | Principal Dimensions (mm) | | | | | | | | | | Bolt Designation | | Bearing Designations | Basic Load Ratings (N) | | Housing Designations | Weight (kg) |
|------------------------|--|------------------------------|-----|----|-----|----|----------------|----------------|----------------|------|------|---------------------|--|-------------------------|---------------------------|---------------------------|----------------------|----------------|
| | | H | L | A | J | N | N ₁ | H ₁ | H ₂ | B | S | | | | Dynamic C _r | Static C _{0r} | | |
| 12 | UCP201 | 30.2 | 127 | 38 | 95 | 13 | 19 | 13 | 60 | 31 | 12.7 | M10 | | UC201 | 12800 | 6600 | P203 | 0.8 |
| 15 | UCP202 | 30.2 | 127 | 38 | 95 | 13 | 19 | 13 | 60 | 31 | 12.7 | M10 | | UC202 | 12800 | 6600 | P203 | 0.78 |
| 17 | UCP203 | 30.2 | 127 | 38 | 95 | 13 | 19 | 13 | 60 | 31 | 12.7 | M10 | | UC203 | 12800 | 6600 | P203 | 0.75 |
| 20 | UCP204 | 33.3 | 127 | 38 | 95 | 13 | 19 | 14 | 65 | 31 | 12.7 | M10 | | UC204 | 12800 | 6600 | P204 | 0.73 |
| 25 | UCP205 | 36.5 | 140 | 38 | 105 | 13 | 19 | 15 | 71 | 34.1 | 14.3 | M10 | | UC205 | 14000 | 7800 | P205 | 0.91 |
| | UCP305 | 45 | 175 | 45 | 132 | 17 | 20 | 15 | 85 | 38 | 15 | M14 | | UC305 | 22400 | 11500 | P305 | 1.52 |
| 30 | UCP206 | 42.9 | 165 | 48 | 121 | 17 | 21 | 17 | 83 | 38.1 | 15.9 | M14 | | UC206 | 19400 | 11200 | P206 | 1.32 |
| | UCP306 | 50 | 180 | 50 | 140 | 17 | 20 | 18 | 95 | 43 | 17 | M14 | | UC306 | 28100 | 15800 | P306 | 1.92 |
| 35 | UCP207 | 47.6 | 167 | 48 | 127 | 17 | 21 | 18 | 93 | 42.9 | 17.5 | M14 | | UC207 | 25600 | 15200 | P207 | 1.72 |
| | UCP307 | 56 | 210 | 56 | 160 | 17 | 25 | 20 | 106 | 48 | 19 | M14 | | UC307 | 33400 | 19200 | P307 | 2.66 |
| 40 | UCP208 | 49.2 | 184 | 54 | 137 | 17 | 21 | 18 | 98 | 49.2 | 19 | M14 | | UC208 | 32600 | 19800 | P208 | 2.14 |
| | UCP308 | 60 | 220 | 60 | 170 | 17 | 27 | 22 | 116 | 52 | 19 | M14 | | UC308 | 40700 | 24000 | P308 | 3.5 |
| 45 | UCP209 | 54 | 190 | 54 | 146 | 17 | 21 | 20 | 106 | 49.2 | 19 | M14 | | UC209 | 32700 | 20400 | P209 | 2.45 |
| | UCP309 | 67 | 245 | 67 | 190 | 20 | 30 | 24 | 129 | 57 | 22 | M16 | | UC309 | 52800 | 31800 | P309 | 4.68 |
| 50 | UCP210 | 57.2 | 206 | 60 | 159 | 20 | 25 | 21 | 114 | 51.6 | 19 | M16 | | UC210 | 35000 | 23100 | P210 | 3.1 |
| | UCP310 | 75 | 275 | 75 | 212 | 20 | 35 | 27 | 143 | 61 | 22 | M16 | | UC310 | 61800 | 37900 | P310 | 6.44 |
| 55 | UCP211 | 63.5 | 219 | 60 | 171 | 20 | 25 | 23 | 126 | 55.6 | 22.2 | M16 | | UC211 | 43300 | 29200 | P211 | 3.85 |
| | UCP311 | 80 | 310 | 80 | 236 | 20 | 38 | 30 | 154 | 66 | 25 | M16 | | UC311 | 71600 | 44800 | P311 | 7.69 |
| 60 | UCP212 | 69.8 | 241 | 70 | 184 | 20 | 25 | 25 | 138 | 65.1 | 25.4 | M16 | | UC212 | 47700 | 32900 | P212 | 5.1 |
| | UCP312 | 85 | 330 | 85 | 250 | 25 | 38 | 32 | 165 | 71 | 26 | M20 | | UC312 | 81800 | 51800 | P312 | 9.4 |



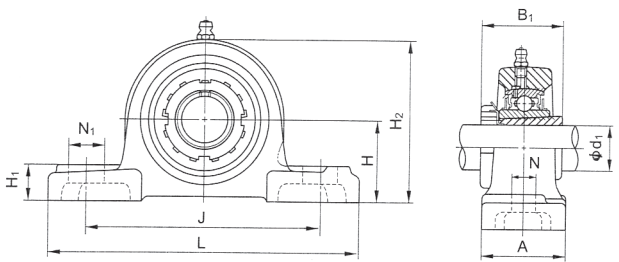
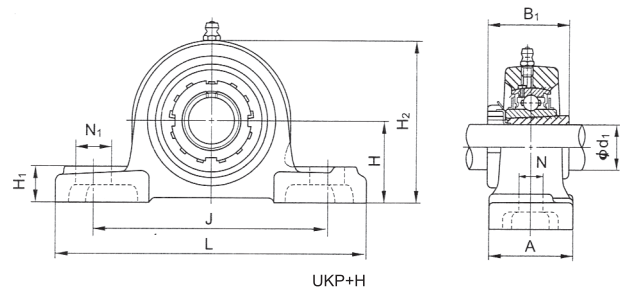
Unit bearing with vertical housing – UCP
d: 65 ~ 140 mm



| d ₁ (mm) | Bearing Units Assembly Designation | Principal Dimensions (mm) | | | | | | | | | | Bolt Designation | | Bearing Designations | Basic Load Ratings (N) | | Housing Designations | Weight (kg) |
|------------------------|--|------------------------------|-----|-----|-----|----|----------------|----------------|----------------|------|------|---------------------|--|-------------------------|---------------------------|---------------------------|----------------------|----------------|
| | | H | L | A | J | N | N ₁ | H ₁ | H ₂ | B | S | | | | Dynamic C _r | Static C _{0r} | | |
| 65 | UCP213 | 76.2 | 264 | 70 | 203 | 25 | 30 | 27 | 151 | 65.1 | 25.4 | M20 | | UC213 | 57200 | 40000 | P213 | 6.26 |
| | UCP313 | 90 | 340 | 90 | 260 | 25 | 38 | 32 | 176 | 75 | 30 | M20 | | UC313 | 97500 | 60000 | P313 | 10.7 |
| 70 | UCP214 | 79.4 | 266 | 72 | 210 | 25 | 30 | 27 | 157 | 74.6 | 30.2 | M20 | | UC214 | 62200 | 44000 | P214 | 6.9 |
| | UCP314 | 95 | 360 | 90 | 280 | 27 | 40 | 35 | 186 | 78 | 33 | M22 | | UC314 | 111000 | 68000 | P314 | 12.4 |
| 75 | UCP215 | 82.6 | 275 | 74 | 217 | 25 | 30 | 28 | 163 | 77.8 | 33.3 | M20 | | UC215 | 66100 | 49500 | P215 | 7.62 |
| | UCP315 | 100 | 380 | 100 | 290 | 27 | 40 | 35 | 198 | 82 | 32 | M22 | | UC315 | 119000 | 76500 | P315 | 14.8 |
| 80 | UCP216 | 88.9 | 292 | 78 | 232 | 25 | 30 | 30 | 175 | 82.6 | 33.3 | M20 | | UC216 | 72500 | 53000 | P216 | 9.03 |
| | UCP316 | 106 | 400 | 110 | 300 | 27 | 40 | 35 | 209 | 86 | 34 | M22 | | UC316 | 130000 | 86500 | P316 | 18.5 |
| 85 | UCP217 | 95.2 | 310 | 83 | 247 | 25 | 30 | 32 | 187 | 85.7 | 34.1 | M20 | | UC217 | 83500 | 64000 | P217 | 11.28 |
| | UCP317 | 112 | 420 | 110 | 320 | 33 | 45 | 40 | 220 | 96 | 40 | M28 | | UC317 | 140000 | 96500 | P317 | 20.3 |
| 90 | UCP218 | 101.6 | 327 | 88 | 262 | 27 | 36 | 33 | 200 | 96 | 39.7 | M22 | | UC218 | 96000 | 71500 | P218 | 13.45 |
| | UCP318 | 118 | 430 | 110 | 330 | 33 | 45 | 40 | 234 | 96 | 40 | M28 | | UC318 | 151000 | 108000 | P318 | 22.8 |
| 95 | UCP319 | 125 | 470 | 120 | 360 | 36 | 50 | 46 | 248 | 103 | 41 | M30 | | UC319 | 159000 | 118000 | P319 | 29 |
| 100 | UCP320 | 140 | 490 | 120 | 380 | 36 | 50 | 46 | 273 | 108 | 42 | M30 | | UC320 | 174000 | 140000 | P320 | 35.1 |
| 105 | UCP321 | 140 | 490 | 120 | 380 | 36 | 50 | 55 | 278 | 112 | 44 | M30 | | UC321 | 183000 | 153100 | P321 | 36.6 |
| 110 | UCP322 | 150 | 520 | 140 | 400 | 40 | 55 | 60 | 295 | 117 | 46 | M33 | | UC322 | 205000 | 178800 | P322 | 42.5 |
| 120 | UCP324 | 160 | 570 | 140 | 450 | 40 | 55 | 70 | 321 | 126 | 51 | M33 | | UC324 | 207000 | 184800 | P324 | 53.5 |
| 130 | UCP326 | 180 | 600 | 140 | 480 | 40 | 55 | 80 | 354 | 135 | 54 | M33 | | UC326 | 229000 | 214300 | P326 | 72.1 |
| 140 | UCP328 | 200 | 620 | 140 | 500 | 40 | 55 | 80 | 388 | 145 | 59 | M33 | | UC328 | 255000 | 246000 | P328 | 89.1 |



Unit bearing with vertical housing – UKP + H
d: 20 ~ 60 mm

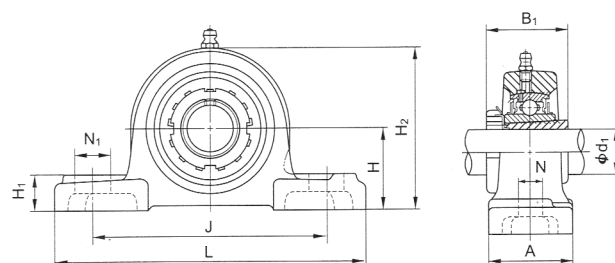


| d ₁ (mm) | Bearing Units Assembly Designation | Principal Dimensions (mm) | | | | | | | | | Bolt Designation | | Bearing Designations | Basic Load Ratings (N) | | Housing Designations | Weight (kg) |
|------------------------|--|------------------------------|-----|----|-----|----|----------------|----------------|----------------|----------------|---------------------|--|-------------------------|---------------------------|---------------------------|----------------------|----------------|
| | | H | L | A | J | N | N ₁ | H ₁ | H ₂ | B ₁ | | | | Dynamic C _r | Static C _{0r} | | |
| 20 | UKP205+H2305 | 36.5 | 140 | 38 | 105 | 13 | 19 | 15 | 71 | 35 | M10 | | UK205+H2305 | 14000 | 7800 | P205 | 0.94 |
| | UKP305+H2305 | 45 | 175 | 45 | 132 | 17 | 20 | 16 | 84 | 35 | M14 | | UK305+H2305 | 21300 | 11200 | P305 | 1.6 |
| 25 | UKP206+H2306 | 42.9 | 165 | 48 | 121 | 17 | 21 | 17 | 83 | 38 | M14 | | UK206+H2306 | 19400 | 11200 | P206 | 1.4 |
| | UKP306+H2306 | 50 | 180 | 50 | 140 | 17 | 20 | 19 | 94 | 38 | M14 | | UK306+H2306 | 28100 | 15800 | P306 | 1.9 |
| 30 | UKP207+H2307 | 47.6 | 167 | 48 | 127 | 17 | 21 | 18 | 93 | 43 | M14 | | UK207+H2307 | 25600 | 15200 | P207 | 1.78 |
| | UKP307+H2307 | 56 | 210 | 56 | 160 | 17 | 25 | 21 | 105 | 43 | M14 | | UK307+H2307 | 33400 | 19200 | P307 | 2.7 |
| 35 | UKP208+H2308 | 49.2 | 184 | 54 | 137 | 17 | 21 | 18 | 98 | 46 | M14 | | UK208+H2308 | 32600 | 19800 | P208 | 2.09 |
| | UKP308+H2308 | 60 | 220 | 60 | 170 | 17 | 27 | 23 | 116 | 46 | M14 | | UK308+H2308 | 40700 | 24000 | P308 | 3.0 |
| 40 | UKP209+H2309 | 54 | 190 | 54 | 146 | 17 | 21 | 20 | 106 | 50 | M14 | | UK209+H2309 | 32700 | 20400 | P209 | 2.54 |
| | UKP309+H2309 | 67 | 245 | 67 | 190 | 20 | 30 | 25 | 128 | 50 | M16 | | UK309+H2309 | 52800 | 31800 | P309 | 4.6 |
| 45 | UKP210+H2310 | 57.2 | 206 | 60 | 159 | 20 | 25 | 21 | 114 | 55 | M16 | | UK213+H2310 | 35000 | 23100 | P210 | 3.22 |
| | UKP310+H2310 | 75 | 275 | 75 | 212 | 20 | 35 | 28 | 143 | 55 | M16 | | UK310+H2310 | 61800 | 37900 | P310 | 6.2 |
| 50 | UKP211+H2311 | 63.5 | 219 | 60 | 171 | 20 | 25 | 23 | 126 | 59 | M16 | | UK211+H2311 | 43300 | 29200 | P211 | 3.98 |
| | UKP311+H2311 | 80 | 310 | 80 | 236 | 20 | 38 | 31 | 154 | 59 | M16 | | UK311+H2311 | 71600 | 44800 | P311 | 7.6 |
| 55 | UKP212+H2312 | 69.8 | 241 | 70 | 184 | 20 | 25 | 25 | 13 | 62 | M16 | | UK212+H2312 | 47700 | 32900 | P212 | 5.13 |
| | UKP312+H2312 | 85 | 330 | 85 | 250 | 25 | 38 | 33 | 165 | 62 | M20 | | UK312+H2312 | 81800 | 51800 | P312 | 9.3 |
| 60 | UKP213+H2313 | 76.2 | 264 | 70 | 203 | 25 | 30 | 27 | 151 | 65 | M20 | | UK213+H2313 | 57200 | 40000 | P213 | 6.35 |
| | UKP313+H2313 | 90 | 340 | 90 | 260 | 25 | 38 | 36 | 174 | 65 | M20 | | UK313+H2313 | 97500 | 60000 | P313 | 9.8 |

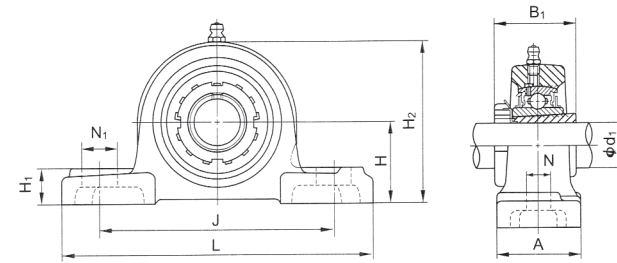


Unit bearing with vertical housing – UKP + H

d: 65 ~ 125 mm



UKP+H

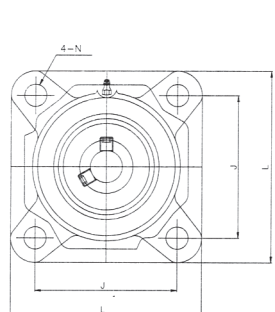


| d ₁ (mm) | Bearing Units Assembly Designation | Principal Dimensions (mm) | | | | | | | | | Bolt Designation | | Bearing Designations | Basic Load Ratings (N) | | Housing Designations | Weight (kg) | |
|------------------------|--|------------------------------|-----|-----|-----|----|----------------|----------------|----------------|----------------|---------------------|--|-------------------------|---------------------------|---------------------------|----------------------|----------------|-------|
| | | H | L | A | J | N | N ₁ | H ₁ | H ₂ | B ₁ | | | | Dynamic C _r | Static C _{0r} | | | |
| | | | | | | | | | | | | | | | | | | |
| 65 | UKP215+H2315 | 82.6 | 275 | 74 | 217 | 25 | 30 | 28 | 163 | 73 | M20 | | | UK215+H2315 | 66100 | 49500 | P215 | 8 |
| | UKP315+H2315 | 100 | 380 | 100 | 290 | 27 | 40 | 40 | 197 | 73 | M22 | | | UK315+H2315 | 119000 | 76500 | P315 | 13.7 |
| 70 | UKP216+H2316 | 88.9 | 292 | 78 | 232 | 25 | 30 | 30 | 175 | 78 | M20 | | | UK216+H2316 | 72500 | 53000 | P216 | 9.5 |
| | UKP316+H2316 | 106 | 400 | 110 | 300 | 27 | 40 | 45 | 209 | 78 | M22 | | | UK316+H2316 | 130000 | 86500 | P316 | 16.6 |
| 75 | UKP217+H2317 | 95.2 | 310 | 83 | 247 | 25 | 30 | 32 | 187 | 82 | M20 | | | UK217+H2317 | 83500 | 64000 | P217 | 11.83 |
| | UKP317+H2317 | 112 | 420 | 110 | 320 | 33 | 45 | 45 | 221 | 82 | M27 | | | UK317+H2317 | 140000 | 96500 | P317 | 18.6 |
| 80 | UKP218+H2318 | 101.6 | 327 | 88 | 262 | 27 | 36 | 33 | 200 | 86 | M22 | | | UK218+H2318 | 96000 | 71500 | P218 | 13.68 |
| | UKP318+H2318 | 118 | 430 | 110 | 330 | 33 | 45 | 50 | 233 | 86 | M27 | | | UK318+H2318 | 151000 | 108000 | P318 | 21.1 |
| 85 | UKP319+H2319 | 125 | 470 | 120 | 360 | 36 | 50 | 50 | 250 | 90 | M30 | | | UK319+H2319 | 159000 | 118000 | P319 | 26.5 |
| 90 | UKP320+H2320 | 140 | 490 | 120 | 380 | 36 | 50 | 55 | 275 | 97 | M30 | | | UK320+H2320 | 174000 | 140000 | P320 | 34.3 |
| 100 | UKP322+H2322 | 150 | 520 | 140 | 400 | 40 | 55 | 60 | 295 | 105 | M33 | | | UK322+H2322 | 205000 | 178800 | P322 | 42.6 |
| 110 | UKP324+H2324 | 160 | 570 | 140 | 450 | 40 | 55 | 70 | 321 | 112 | M33 | | | UK324+H2324 | 207000 | 184800 | P324 | 53.0 |
| 115 | UKP326+H2326 | 180 | 600 | 140 | 480 | 40 | 55 | 80 | 354 | 121 | M33 | | | UK326+H2326 | 229000 | 214300 | P326 | 72.4 |
| 125 | UKP328+H2328 | 200 | 620 | 140 | 500 | 40 | 55 | 80 | 388 | 131 | M33 | | | UK328+H2328 | 255000 | 246000 | P328 | 89.4 |

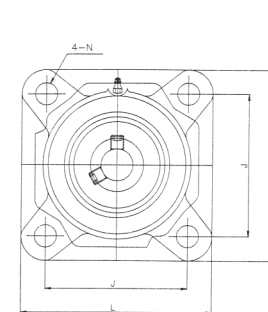
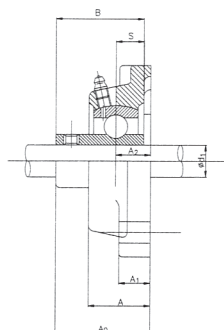


Unit bearing with square-shape housing - UCF

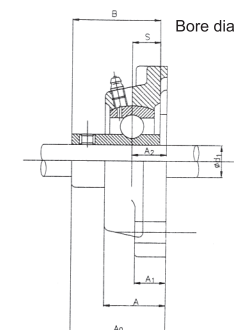
d : 12 ~ 60 mm



UCF



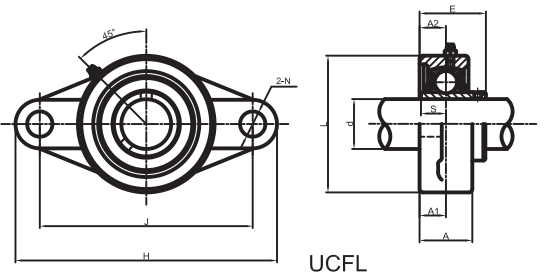
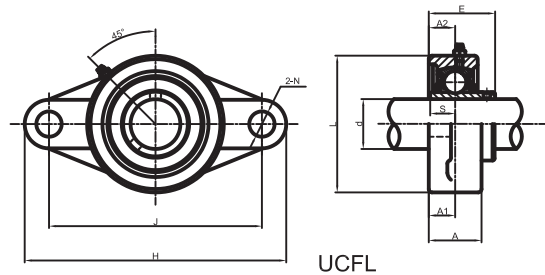
UCF



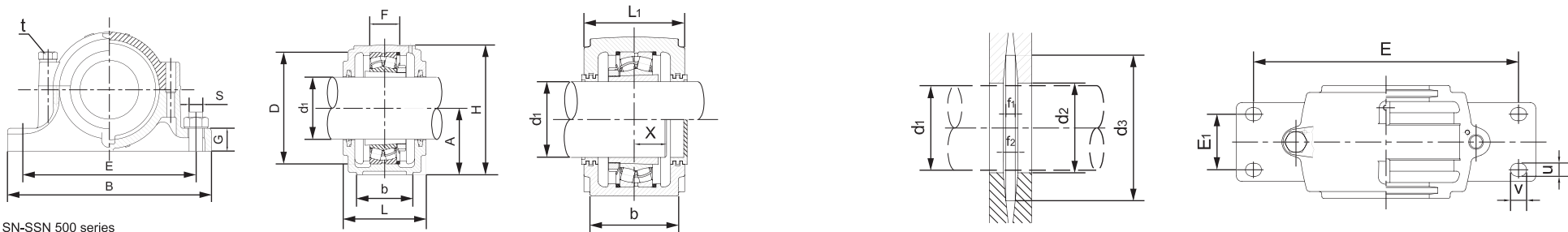
□ Bore diameter d: 65~140mm

[illegible]

Unit bearing with diamond-shape housing – UCFL
d: 12 ~ 90 mm



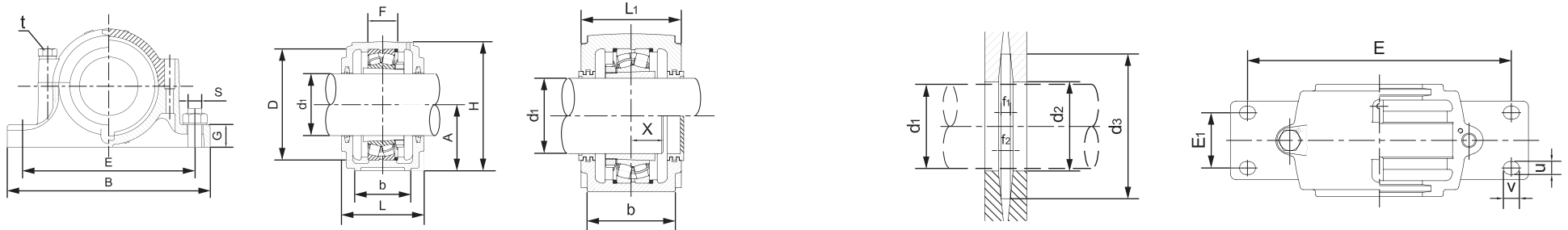
| d ₁ (mm) | Bearing Units Assembly Designation | Principal Dimensions (mm) | | | | | | | | | | | Bolt Designation | Bearing Designations | Basic Load Ratings(N) | | Housing Designation | Weight (kg) |
|------------------------|------------------------------------|---------------------------|-----|-----|----------------|----------------|-------|----|-------|-------|--|--|------------------|----------------------|-----------------------|-------------|---------------------|----------------|
| | | H | J | L | A ₂ | A ₁ | A | N | E | S | | | | | Dynamic (Cr) | Static(Cor) | | |
| 12 | UCFL201 | 113 | 90 | 60 | 15 | 11 | 25.50 | 12 | 33.30 | 12.70 | | | M10 | UC201 | 12800 | 6600 | FL204 | 0.56 |
| 15 | UCFL202 | 113 | 90 | 60 | 15 | 11 | 25.50 | 12 | 33.30 | 12.70 | | | M10 | UC202 | 12800 | 6600 | FL204 | 0.54 |
| 17 | UCFL203 | 113 | 90 | 60 | 15 | 11 | 25.50 | 12 | 33.30 | 12.70 | | | M10 | UC203 | 12800 | 6600 | FL204 | 0.53 |
| 20 | UCFL204 | 113 | 90 | 60 | 15 | 11 | 25.50 | 12 | 33.30 | 12.70 | | | M10 | UC204 | 12800 | 6600 | FL204 | 0.52 |
| 25 | UCFL205 | 130 | 99 | 68 | 16 | 13 | 27 | 16 | 35.80 | 14.30 | | | M14 | UC205 | 14000 | 7800 | FL205 | 0.64 |
| 30 | UCFL206 | 148 | 117 | 80 | 18 | 13 | 31 | 16 | 40.20 | 15.90 | | | M14 | UC206 | 19400 | 11200 | FL206 | 0.93 |
| 35 | UCFL207 | 161 | 130 | 90 | 19 | 15 | 34 | 16 | 44.40 | 17.50 | | | M14 | UC207 | 25600 | 15200 | FL207 | 1.20 |
| 40 | UCFL208 | 175 | 144 | 100 | 21 | 15 | 36 | 16 | 51.20 | 19.00 | | | M14 | UC208 | 32600 | 19800 | FL208 | 1.59 |
| 45 | UCFL209 | 188 | 148 | 108 | 22 | 16 | 38 | 19 | 52.20 | 19.00 | | | M16 | UC209 | 32700 | 20400 | FL209 | 1.84 |
| 50 | UCFL210 | 197 | 157 | 115 | 22 | 16 | 40 | 19 | 54.60 | 19.00 | | | M16 | UC210 | 35000 | 23100 | FL210 | 2.15 |
| 55 | UCFL211 | 224 | 184 | 130 | 25 | 18 | 43 | 19 | 58.40 | 22.20 | | | M16 | UC211 | 43300 | 29200 | FL211 | 3.10 |
| 60 | UCFL212 | 250 | 202 | 140 | 29 | 18 | 48 | 23 | 68.70 | 25.40 | | | M20 | UC212 | 47700 | 32900 | FL212 | 3.99 |
| 65 | UCFL213 | 258 | 210 | 155 | 30 | 22 | 50 | 23 | 69.70 | 25.40 | | | M20 | UC213 | 57200 | 40000 | FL213 | 4.96 |
| 70 | UCFL214 | 265 | 216 | 160 | 31 | 22 | 54 | 23 | 75.40 | 30.20 | | | M20 | UC214 | 62200 | 44000 | FL214 | 5.60 |
| 75 | UCFL215 | 275 | 225 | 165 | 34 | 22 | 56 | 23 | 78.50 | 33.30 | | | M20 | UC215 | 66100 | 49500 | FL215 | 6.21 |
| 80 | UCFL216 | 290 | 233 | 180 | 34 | 22 | 58 | 25 | 83.30 | 33.30 | | | M22 | UC216 | 72500 | 53000 | FL216 | 7.69 |
| 85 | UCFL217 | 305 | 248 | 190 | 36 | 24 | 63 | 25 | 87.60 | 34.10 | | | M22 | UC217 | 83500 | 64000 | FL217 | 9.15 |
| 90 | UCFL218 | 320 | 265 | 205 | 40 | 24 | 68 | 25 | 96.30 | 39.70 | | | M22 | UC218 | 96000 | 71500 | FL218 | 10.95 |



SN-SSN 500 series

| Type | | Shaft Dimensions d1 | | Principal Dimensions (mm) | | | | | | | | | | | | | |
|--------|-----|---------------------|-------|---------------------------|-----|-----|----|-------|-------|-----|-----|-----|----|-----|----|----------|--|
| | | mm | in | D H7 | B | b | G | F H13 | A h13 | L | H | E | E1 | L1 | X | d2H12 mm | |
| SN | 505 | 20 | 3/4 | 52 | 165 | 46 | 22 | 25 | 40 | 67 | 75 | 130 | 25 | - | 22 | 21.5 | |
| SN | 506 | 25 | 1 | 62 | 185 | 52 | 22 | 30 | 50 | 77 | 90 | 150 | 25 | - | 22 | 26.5 | |
| SN | 507 | 30 | 1 1/8 | 72 | 185 | 52 | 22 | 33 | 50 | 82 | 95 | 150 | 25 | - | 24 | 31.5 | |
| SN | 508 | 35 | 1 1/4 | 80 | 205 | 60 | 25 | 33 | 60 | 85 | 110 | 170 | 30 | - | 26 | 36.5 | |
| SN SSN | 509 | 40 | 1 1/2 | 85 | 205 | 60 | 25 | 31 | 60 | 85 | 112 | 170 | 30 | 90 | 28 | 41.5 | |
| SN SSN | 510 | 45 | 1 3/4 | 90 | 205 | 60 | 25 | 33 | 60 | 90 | 115 | 170 | 30 | 95 | 28 | 46.5 | |
| SN SSN | 511 | 50 | 2 | 100 | 255 | 70 | 28 | 33 | 70 | 95 | 130 | 210 | 35 | 100 | 30 | 51.5 | |
| SN SSN | 512 | 55 | 2 1/8 | 110 | 255 | 70 | 30 | 38 | 70 | 105 | 135 | 210 | 35 | 110 | 32 | 56.5 | |
| SN SSN | 513 | 60 | 2 1/4 | 120 | 275 | 80 | 30 | 43 | 80 | 110 | 150 | 230 | 40 | 115 | 36 | 62 | |
| SN SSN | 515 | 65 | 2 1/2 | 130 | 280 | 80 | 30 | 41 | 80 | 115 | 155 | 230 | 40 | 120 | 38 | 67 | |
| SN SSN | 516 | 70 | 2 3/4 | 140 | 315 | 90 | 32 | 43 | 95 | 120 | 175 | 260 | 50 | 125 | 40 | 72 | |
| SN SSN | 517 | 75 | 3 | 150 | 320 | 90 | 32 | 46 | 95 | 125 | 185 | 260 | 50 | 130 | 42 | 77 | |
| SN SSN | 518 | 80 | 3 1/4 | 160 | 345 | 100 | 35 | 62.4 | 100 | 145 | 195 | 290 | 50 | 150 | 50 | 82 | |
| SN SSN | 519 | 85 | - | 170 | 345 | 100 | 35 | 53 | 112 | 140 | 210 | 290 | 50 | 152 | - | 87 | |
| SN SSN | 520 | 90 | 3 1/2 | 180 | 380 | 110 | 40 | 70.3 | 112 | 160 | 218 | 320 | 60 | 165 | 54 | 92 | |
| SN SSN | 522 | 100 | 4 | 200 | 410 | 120 | 45 | 80 | 125 | 175 | 240 | 350 | 70 | 180 | 60 | 102 | |
| SN SSN | 524 | 110 | 4 1/4 | 215 | 410 | 120 | 45 | 86 | 140 | 185 | 270 | 350 | 70 | 190 | 64 | 113 | |
| SN SSN | 526 | 115 | 4 1/2 | 230 | 445 | 130 | 50 | 90 | 150 | 190 | 290 | 380 | 70 | 195 | 64 | 118 | |
| SN SSN | 528 | 125 | 5 | 250 | 500 | 150 | 50 | 98 | 150 | 205 | 305 | 420 | 80 | 210 | 70 | 128 | |
| SN SSN | 530 | 135 | 5 1/4 | 270 | 530 | 160 | 60 | 106 | 160 | 220 | 325 | 450 | 90 | 225 | 76 | 138 | |
| SN SSN | 532 | 140 | 5 1/2 | 290 | 550 | 160 | 60 | 114 | 170 | 235 | 345 | 470 | 90 | 240 | 80 | 143 | |

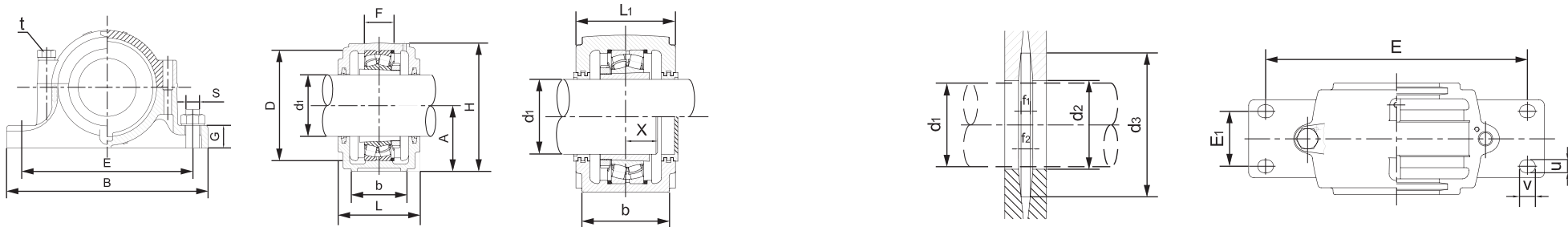
| d3 H12 | Principal Dimensions (mm) | | | | | | | | | | Weight | | Bearing Designations | | Adapter Sleeve | | Holding Ring | |
|-----------|---------------------------|-----------|------|----|----|-----|-----|-------|------|--------|--------|-------------------------------|--|----------|----------------|------|--------------|--|
| | t | f1 H13 | f2 | u | v | S | | SN5 | | SSN5 | | Self-Aligning Ball Bearing | Self-Aligning Roll Ball Bearings | Metric | Inch | Type | Amount | |
| 31 | M8 | 3 | 4.2 | 15 | 20 | M12 | M8 | 1.5 | 2.3 | 1205K | - | H205 | HE205 | 52x5 | 2 | | | |
| 38 | M8 | 4 | 5.4 | 15 | 20 | M12 | M10 | 1.74 | 2.8 | 1206K | - | H206 | HE206 | 62x7 | 2 | | | |
| | | | | | | | | | | 2205K | 22205K | H305 | HE305 | 52x7 | 1 | | | |
| 43 | M10 | 4 | 5.4 | 15 | 20 | M12 | M10 | 1.9 | 3.2 | 1206K | - | H306 | HE306 | 62x10 | 1 | | | |
| | | | | | | | | | | 1207K | - | H207 | HE207 | 72x8 | 2 | | | |
| 48 | M10 | 4 | 5.4 | 15 | 20 | M12 | M10 | 2.63 | 3.2 | 2207K | 22207K | H307 | HE307 | 72x10 | 2 | | | |
| | | | | | | | | | | 1208K | - | H208 | HE208 | 80x7.5 | 2 | | | |
| 53 | M10 | 4 | 5.4 | 15 | 20 | M12 | M10 | 2.64 | 3.7 | 2208K | 22208K | H308 | HE308 | 80x10 | 1 | | | |
| | | | | | | | | | | 1209K | - | H209 | HE209 | 85x6 | 2 | | | |
| 58 | M10 | 4 | 5.4 | 15 | 20 | M12 | M10 | 2.64 | 3.7 | 2209K | 22209K | H309 | HE309 | 85x8 | 1 | | | |
| | | | | | | | | | | 1210K | - | H210 | HE210 | 90x6.5 | 2 | | | |
| 67 | M12 | 5 | 6.9 | 18 | 23 | M16 | M12 | 4.32 | 6.2 | 2210K | 22210K | H310 | HE310 | 90x10 | 1 | | | |
| | | | | | | | | | | 1211K | - | H211 | HE211 | 100x6 | 2 | | | |
| 72 | M12 | 5 | 6.9 | 18 | 23 | M16 | M12 | 4.99 | 6.5 | 2211K | 22211K | H311 | HE311 | 100x8 | 1 | | | |
| | | | | | | | | | | 1212K | - | H212 | HE212 | 110x8 | 2 | | | |
| 77 | M12 | 5 | 6.8 | 18 | 23 | M16 | M12 | 5.64 | 8.3 | 2212K | 22212K | H312 | HE312 | 110x10 | 1 | | | |
| | | | | | | | | | | 1213K | - | H213 | HE213 | 120x10 | 2 | | | |
| 82 | M12 | 5 | 6.8 | 18 | 23 | M16 | M12 | 6.19 | 9.0 | 2213K | 22213K | H313 | HE313 | 120x12 | 1 | | | |
| | | | | | | | | | | 1215K | - | H215 | HE215 | 130x8 | 2 | | | |
| 89 | M16 | 6 | 8.1 | 22 | 27 | M20 | M12 | 8.17 | 12.1 | 2215K | 22215K | H315 | HE315 | 130x10 | 1 | | | |
| | | | | | | | | | | 1216K | - | H216 | HE216 | 140x8.5 | 2 | | | |
| 94 | M16 | 6 | 8.1 | 22 | 27 | M20 | M12 | 9.37 | 12.2 | 2216K | 22216K | H316 | HE316 | 140x10 | 1 | | | |
| | | | | | | | | | | 1217K | - | H217 | HE217 | 150x9 | 2 | | | |
| 99 | M16 | 6 | 8.1 | 22 | 27 | M20 | M16 | 11.5 | 15.2 | 2217K | 22217K | H317 | HE317 | 150x10 | 1 | | | |
| | | | | | | | | | | 1218K | - | H218 | HE218 | 160x16.2 | 2 | | | |
| 104 | M16 | 6 | 8.1 | 22 | 27 | M20 | M16 | 13.5 | 17.7 | 2218K | 22218K | H318 | HE318 | 160x11.2 | 2 | | | |
| | | | | | | | | | | - | 23218K | H2318 | HE2318 | 160x10 | 1 | | | |
| 111 | M20 | 7 | 9.3 | 26 | 32 | M20 | M16 | 16.3 | 20.5 | 1219K | - | H219 | - | 170x10.5 | 2 | | | |
| | | | | | | | | | | - | 22219K | H319 | - | 170x10 | 1 | | | |
| 125 | M20 | 8 | 10.8 | 26 | 32 | M24 | M16 | 25.1 | 29.2 | 2220K | 22220K | H320 | HE320 | 180x12.1 | 2 | | | |
| | | | | | | | | | | - | 23220K | H2320 | HE2320 | 180x10 | 1 | | | |
| 135 | M20 | 8 | 10.7 | 26 | 34 | M24 | M16 | 25.1 | 29.2 | 2222K | 22222K | H322 | HE322 | 200x13.5 | 2 | | | |
| | | | | | | | | | | - | 23222K | H2322 | HE2322 | 200x10 | 1 | | | |
| 140 | M24 | 8 | 10.7 | 28 | 35 | M24 | M20 | 35.2 | 40.9 | 2222K | 22224K | H3124 | HE3124 | 215x14 | 2 | | | |
| | | | | | | | | | | - | 23224K | H2324 | HE2324 | 215x10 | 1 | | | |
| 154 | M24 | 9 | 12.2 | 34 | 44 | M30 | M24 | 43.7 | 48.6 | 2222K | 22226K | H3126 | HE3126 | 230x13 | 2 | | | |
| | | | | | | | | | | - | 23226K | H2326 | HE2326 | 230x10 | 1 | | | |
| 164 | M24 | 9 | 12.2 | 34 | 42 | M30 | M24 | 45.3 | 56.2 | 2228K | 22228K | H3128 | HE3128 | 250x15 | 2 | | | |
| | | | | | | | | | | - | 23228K | H2328 | HE2328 | 250x10 | 1 | | | |
| 173 | M24 | 10 | 13.7 | 32 | 44 | M30 | M24 | 50.75 | 68.5 | 22230K | 22230K | H3130 | HE3130 | 270x16.5 | 2 | | | |
| | | | | | | | | | | - | 23230K | H2330 | HE2330 | 270x10 | 1 | | | |
| 173 | M24 | 10 | 13.7 | 32 | 44 | M30 | M24 | 50.75 | 68.5 | 22232K | 22232K | H3132 | HE3132 | 290x17 | 2 | | | |
| | | | | | | | | | | - | 23232K | H2332 | HE2332 | 290x10 | 1 | | | |



SN-SSN 600 series

| Type | Shaft Dimensions d1 | | Principal Dimensions (mm) | | | | | | | | | | | | | | | | Principal Dimensions (mm) | | | | | | | | Weight | | Bearing Designations | | Adapter Sleeve | | Holding Ring | |
|------------|---------------------|-------|---------------------------|-----|-----|----|-------|-------|-----|-----|-----|-----|-----|----|----------|--------|--|-----|---------------------------|--------|----|----|-----|-----|-------|------|----------------|----------------------------|----------------------------------|-----------------|--------------------|--------|--------------|--|
| | mm | in | D H7 | B | b | G | F H13 | A h13 | L | H | E | E1 | L1 | X | d2H12 mm | d3 H12 | | | t | f1 H13 | f2 | u | v | S | | SN6 | SSN6 | Self-aligning Ball Bearing | Self-aligning Roll Ball Bearings | Metric | Inch | Type | Amount | |
| SN 605 | 20 | 3/4 | 62 | 185 | 52 | 22 | 34 | 50 | 80 | 90 | 150 | 25 | - | 27 | 31 | 31 | | M8 | 3 | 4.2 | 16 | 20 | M12 | M10 | 1.5 | 2.3 | 1305K 2305K | - | H305 H2305 | HE305 HE2305 | 62X8.5 62X10 | 2 1 | | |
| SN 606 | 25 | 1 | 72 | 185 | 52 | 22 | 37 | 50 | 82 | 95 | 150 | 25 | - | 27 | 38 | 38 | | M10 | 4 | 5.4 | 16 | 20 | M12 | M10 | 1.74 | 2.8 | 1306K 2306K | - | H306 H2306 | HE306 HE2306 | 72X9 72X10 | 2 1 | | |
| SN 607 | 30 | 1 1/8 | 80 | 205 | 60 | 25 | 41 | 60 | 90 | 110 | 170 | 30 | - | 32 | 43 | 43 | | M10 | 4 | 5.4 | 16 | 20 | M12 | M10 | 1.9 | 3.2 | 1307K 2307K | - | H307 H2307 | HE307 HE2307 | 80X10 80X10 | 2 1 | | |
| SN 608 | 35 | 1 1/4 | 90 | 205 | 60 | 25 | 43 | 60 | 95 | 115 | 170 | 30 | - | 34 | 48 | 48 | | M10 | 4 | 5.4 | 15 | 24 | M12 | M10 | 2.63 | 3.2 | 1308K 2308K | 21308K 22308K | H308 H2308 | HE308 HE2308 | 90X10 90X10 | 2 1 | | |
| SN SSN 609 | 40 | 1 1/2 | 100 | 255 | 70 | 28 | 46 | 70 | 105 | 130 | 210 | 35 | 110 | 36 | 53 | 53 | | M12 | 4 | 5.4 | 19 | 25 | M16 | M12 | 2.64 | 3.7 | 1309K 2309K | 21309K 22309K | H309 H2309 | HE309 HE2309 | 100X10.5 100X10 | 2 1 | | |
| SN SSN 610 | 45 | 1 3/4 | 110 | 255 | 70 | 30 | 50 | 70 | 115 | 135 | 210 | 35 | 120 | 39 | 58 | 58 | | M12 | 4 | 5.4 | 18 | 23 | M16 | M12 | 2.8 | 3.8 | 1310K 2310K | 21310K 22310K | H310 H2310 | HE310 HE2310 | 110X11.5 110X10 | 2 1 | | |
| SN SSN 611 | 50 | 2 | 120 | 275 | 80 | 30 | 53 | 80 | 120 | 150 | 230 | 40 | 125 | 40 | 67 | 67 | | M12 | 5 | 6.9 | 20 | 28 | M16 | M12 | 4.32 | 6.2 | 1311K 2311K | 21311K 22311K | H311 H2311 | HE311 HE2311 | 120X12 120X10 | 2 1 | | |
| SN SSN 612 | 55 | 2 1/8 | 130 | 280 | 80 | 30 | 56 | 80 | 125 | 155 | 230 | 40 | 130 | 44 | 72 | 72 | | M12 | 5 | 6.9 | 20 | 28 | M16 | M12 | 4.99 | 6.5 | 1312K 2312K | 21312K 22312K | H312 H2312 | HE312 HE2312 | 130X12.5 130X10 | 2 1 | | |
| SN SSN 613 | 60 | 2 1/4 | 140 | 315 | 90 | 32 | 58 | 95 | 130 | 175 | 260 | 50 | 135 | 46 | 77 | 77 | | M16 | 5 | 6.8 | 22 | 30 | M20 | M12 | 5.64 | 8.3 | 1313K 2313K | 21313K 22313K | H313 H2313 | HE313 HE2313 | 140X12.5 140X10 | 2 1 | | |
| SN SSN 615 | 65 | 2 1/2 | 160 | 345 | 100 | 35 | 65 | 100 | 140 | 195 | 290 | 50 | 145 | 51 | 82 | 82 | | M16 | 5 | 6.8 | 23 | 28 | M20 | M16 | 6.19 | 9.0 | 1315K 2315K | 21315K 22315K | H315 H2315 | HE315 HE2315 | 160X14 160X10 | 2 1 | | |
| SN SSN 616 | 70 | 2 3/4 | 170 | 345 | 100 | 35 | 68 | 112 | 145 | 212 | 290 | 50 | 150 | 52 | 89 | 89 | | M16 | 6 | 8.1 | 23 | 30 | M20 | M16 | 8.17 | 12.1 | 1316K 2316K | 21316K 22316K | H316 H2316 | HE316 HE2316 | 170X14.5 170X10 | 2 1 | | |
| SN SSN 617 | 75 | 3 | 180 | 380 | 110 | 40 | 70 | 112 | 155 | 218 | 320 | 60 | 160 | 56 | 94 | 94 | | M20 | 6 | 8.1 | 26 | 35 | M24 | M16 | 9.37 | 12.2 | 1317K 2317K | 21317K 22317K | H317 H2317 | HE317 HE2317 | 180X14.5 180X10 | 2 1 | | |
| SN SSN 618 | 80 | 3 1/4 | 190 | 400 | 110 | 33 | 74 | 112 | 160 | 230 | 320 | 60 | 165 | 58 | 99 | 99 | | M20 | 6 | 8.1 | 27 | 38 | M24 | M16 | 11.5 | 15.2 | 1318K 2318K | - 22318K | H318 H2318 | HE318 HE2318 | 190X15.5 190X10 | 2 1 | | |
| SN SSN 619 | 85 | - | 200 | 420 | 120 | 36 | 77 | 125 | 170 | 245 | 350 | 70 | 180 | 60 | 104 | 104 | | M20 | 6 | 8.1 | 28 | 36 | M24 | M16 | 13.5 | 17.7 | 1319K 2319K | - 22319K | H319 H2319 | HE319 HE2319 | 200X16 200X10 | 2 1 | | |
| SN SSN 620 | 90 | 3 1/2 | 215 | 420 | 120 | 38 | 83 | 140 | 175 | 280 | 350 | 70 | 180 | 64 | 111 | 111 | | M20 | 7 | 9.3 | 27 | 33 | M24 | M16 | 16.3 | 20.5 | 1320K 2320K | - 22320K | H320 H2320 | HE320 HE2320 | 215X18 215X10 | 2 1 | | |
| SN SSN 622 | 100 | 4 | 240 | 460 | 130 | 40 | 90 | 150 | 190 | 300 | 390 | 70 | 195 | 69 | 125 | 125 | | M20 | 8 | 10.8 | 28 | 32 | M24 | M16 | 25.1 | 29.2 | 1322K 2322K | - 22322K | H322 H2322 | HE322 HE2322 | 240X20 240X10 | 2 1 | | |
| SN SSN 624 | 110 | 4 1/4 | 260 | 540 | 160 | 50 | 96 | 160 | 205 | 325 | 450 | 90 | 210 | 73 | 135 | 135 | | M24 | 8 | 10.7 | 34 | 42 | M30 | M20 | 27.2 | 33 | - | 22324K | H2324 | HE2324 | 260X10 | 1 | | |
| SN SSN 626 | 115 | 4 1/2 | 280 | 560 | 160 | 50 | 103 | 170 | 215 | 350 | 470 | 90 | 220 | 77 | 140 | 140 | | M24 | 8 | 10.7 | 34 | 42 | M30 | M20 | 35.2 | 40.9 | - | 22326K | H2326 | HE2326 | 280X10 | 1 | | |
| SN SSN 628 | 125 | 5 | 300 | 630 | 170 | 55 | 112 | 180 | 235 | 375 | 520 | 90 | 240 | 83 | 154 | 154 | | M30 | 9 | 12.2 | 34 | 46 | M30 | M20 | 43.7 | 48.6 | - | 22328K | H2328 | HE2328 | 300X10 | 1 | | |
| SN SSN 630 | 135 | 5 1/4 | 320 | 680 | 180 | 55 | 118 | 190 | 245 | 395 | 560 | 90 | 250 | 88 | 164 | 164 | | M30 | 9 | 12.2 | 38 | 44 | M30 | M20 | 45.3 | 56.2 | - | 22330K | H2330 | HE2330 | 320X10 | 1 | | |
| SN SSN 632 | 140 | 5 1/2 | 340 | 710 | 190 | 60 | 124 | 200 | 255 | 415 | 580 | 100 | 260 | 93 | 173 | 173 | | M30 | 10 | 13.7 | 40 | 52 | M36 | M24 | 50.75 | 68.5 | - | 22332K | H2332 | HE2332 | 340X10 | 1 | | |





SNZ-SSNZ 200 series

| Type | Shaft Dimension | | | Principal Dimensions (mm) | | | | | | | | | | | | | Self-Aligning Ball Bearings | Self-Aligning Roll Ball Bearings | Lock Nut | Mounting Lock Washer | ZF Seal | | Holding Ring | | | | Type | Shaft Dimension | | | Principal Dimensions (mm) | | | | | | | | | | | | | Self-Aligning Ball Bearings | Self-Aligning Roll Ball Bearings | Lock Nut | Mounting Lock Washer | ZF Seal | | Holding Ring | |
|--------------|-----------------|-----|-----|---------------------------|-----|-----|----|-------|-------|-----|-----|-----|------|---------------|----------------|----------------|-----------------------------|----------------------------------|----------|----------------------|--------------------------------|--------|--------------|--------------|--------------|-----|------|-----------------|-----|-----|---------------------------|-------|-------|-----|-----|-----|------|--------------|----------------|----------------|--------|------|------|-----------------------------|----------------------------------|----------|----------------------|---------|--|--------------|--|
| | d | d1 | d2 | D H7 | B | b | G | F H13 | A h13 | L | H | E | bolt | d1 | d2 | Type | | | | | Amount | d | d1 | d2 | | | | D H7 | B | b | G | F H13 | A h13 | L | H | E | bolt | d1 | d2 | Type | Amount | | | | | | | | | | |
| SNZ 205 | 25 | 20 | 30 | 52 | 165 | 46 | 22 | 25 | 40 | 67 | 75 | 130 | M12 | 1205 2205 | - 22205 | AN05 | AW05 | ZF5 | ZF7 | 52x5 52x7 | 2 1 | | | SNZ 305 | 25 | 20 | 30 | 60 | 185 | 52 | 22 | 34 | 50 | 80 | 90 | 150 | M12 | 1305 2305 | - - | AN05 | AW05 | ZF5 | ZF7 | 62x8.5 62x10 | 2 1 | | | | | | |
| SNZ 206 | 30 | 25 | 35 | 62 | 185 | 52 | 22 | 30 | 50 | 77 | 90 | 150 | M12 | 1206 2206 | - 22206 | AN06 | AW06 | ZF6 | ZF8 | 62x7 62x10 | 2 1 | | | SNZ 306 | 30 | 25 | 35 | 72 | 185 | 52 | 22 | 37 | 50 | 82 | 95 | 150 | M12 | 1306 2306 | - - | AN06 | AW06 | ZF6 | ZF8 | 72x9 72x10 | 2 1 | | | | | | |
| SNZ 207 | 35 | 30 | 45 | 72 | 185 | 52 | 22 | 33 | 50 | 82 | 95 | 150 | M12 | 1207 2207 | - 22207 | AN07 | AW07 | ZF7 | ZF10 | 72x8 72x10 | 2 1 | | | SNZ 307 | 35 | 30 | 45 | 80 | 205 | 60 | 25 | 41 | 60 | 90 | 110 | 170 | M12 | 1307 2307 | - - | AN07 | AW07 | ZF7 | ZF10 | 80x10 80x10 | 2 1 | | | | | | |
| SNZ 208 | 40 | 35 | 50 | 80 | 205 | 60 | 25 | 33 | 60 | 85 | 110 | 170 | M12 | 1208 2208 | - 22208 | AN08 | AW08 | ZF8 | ZF11 | 80x7.5 80x10 | 2 1 | | | SNZ 308 | 40 | 35 | 50 | 90 | 205 | 60 | 25 | 43 | 60 | 95 | 115 | 170 | M12 | 1308 2308 | 21308 22308 | AN08 | AW08 | ZF8 | ZF11 | 90x10 90x10 | 2 1 | | | | | | |
| SNZ SSNZ 209 | 45 | 40 | 55 | 85 | 205 | 60 | 25 | 31 | 60 | 85 | 112 | 170 | M12 | 1209 2209 | - 22209 | AN09 | AW09 | ZF9 | ZF12 | 85x6 85x8 | 2 1 | | | SNZ SSNZ 309 | 45 | 40 | 55 | 100 | 255 | 70 | 28 | 46 | 70 | 105 | 130 | 210 | M16 | 1309 2309 | 21309 22309 | AN09 | AW09 | ZF9 | ZF12 | 100x10.5 100x10 | 2 1 | | | | | | |
| SNZ SSNZ 210 | 50 | 45 | 60 | 90 | 205 | 60 | 25 | 33 | 60 | 90 | 115 | 170 | M12 | 1210 2210 | - 22210 | AN10 | AW10 | ZF10 | ZF13 | 90x6.5 90x10 | 2 1 | | | SNZ SSNZ 310 | 50 | 45 | 60 | 110 | 255 | 70 | 30 | 50 | 70 | 115 | 135 | 210 | M16 | 1310 2310 | 21310 22310 | AN10 | AW10 | ZF10 | ZF13 | 110x11.5 110x10 | 2 1 | | | | | | |
| SNZ SSNZ 211 | 55 | 50 | 65 | 100 | 255 | 70 | 28 | 33 | 70 | 95 | 130 | 210 | M16 | 1211 2211 | - 22211 | AN11 | AW11 | ZF11 | ZF15 | 100x6 100x8 | 2 1 | | | SNZ SSNZ 311 | 55 | 50 | 65 | 120 | 275 | 80 | 30 | 53 | 80 | 120 | 150 | 230 | M16 | 1311 2311 | 21311 22311 | AN11 | AW11 | ZF11 | ZF15 | 120x12 120x10 | 2 1 | | | | | | |
| SNZ SSNZ 212 | 60 | 55 | 70 | 110 | 255 | 70 | 30 | 38 | 70 | 105 | 135 | 210 | M16 | 1212 2212 | - 22212 | AN12 | AW12 | ZF12 | ZF16 | 11x08 110x10 | 2 1 | | | SNZ SSNZ 312 | 60 | 55 | 70 | 130 | 280 | 80 | 30 | 56 | 80 | 125 | 155 | 230 | M16 | 1312 2312 | 21312 22312 | AN12 | AW12 | ZF12 | ZF16 | 130x12.5 130x10 | 2 1 | | | | | | |
| SNZ SSNZ 213 | 65 | 60 | 75 | 120 | 275 | 80 | 30 | 43 | 80 | 110 | 150 | 230 | M16 | 1213 2213 | - 22213 | AN13 | AW13 | ZF13 | ZF17 | 120x10 120x12 | 2 1 | | | SNZ SSNZ 313 | 65 | 60 | 75 | 140 | 315 | 90 | 32 | 58 | 95 | 130 | 175 | 260 | M20 | 1313 2313 | 21313 22313 | AN13 | AW13 | ZF13 | ZF17 | 140x12.5 140x10 | 2 1 | | | | | | |
| SNZ SSNZ 214 | 70 | 60 | 80 | 125 | 275 | 80 | 30 | 44 | 80 | 115 | 155 | 230 | M16 | 1214 2214 | - 22214 | AN14 | AW14 | ZF14 | ZF18 | 125x10 125x13 | 2 1 | | | SNZ SSNZ 314 | 70 | 60 | 80 | 150 | 320 | 90 | 32 | 61 | 95 | 130 | 185 | 262 | M20 | 1314 - | 21314 22314 | AN14 | AW14 | ZF14 | ZF18 | 150x13 150x10 | 2 1 | | | | | | |
| SNZ SSNZ 215 | 75 | 65 | 85 | 130 | 280 | 80 | 30 | 41 | 80 | 115 | 155 | 230 | M16 | 1215 2215 | - 22215 | AN15 | AW15 | ZF15 | ZF19 | 130x8 130x10 | 2 1 | | | SNZ SSNZ 315 | 75 | 65 | 85 | 160 | 345 | 100 | 35 | 65 | 100 | 140 | 195 | 290 | M20 | 1315 2315 | 21315 22315 | AN15 | AW15 | ZF15 | ZF19 | 160x14 160x10 | 2 1 | | | | | | |
| SNZ SSNZ 216 | 80 | 70 | 90 | 140 | 315 | 90 | 32 | 43 | 95 | 120 | 175 | 260 | M20 | 1216 2216 | - 22216 | AN16 | AW16 | ZF16 | ZF20 | 140x8.5 140x10 | 2 1 | | | SNZ SSNZ 316 | 80 | 70 | 90 | 170 | 345 | 100 | 35 | 68 | 112 | 145 | 212 | 290 | M20 | 1316 2316 | 21316 22316 | AN16 | AW16 | ZF16 | ZF20 | 170x14.5 170x10 | 2 1 | | | | | | |
| SNZ SSNZ 217 | 85 | 75 | 95 | 150 | 320 | 90 | 32 | 46 | 95 | 125 | 185 | 260 | M20 | 1217 2217 | - 22217 | AN17 | AW17 | ZF17 | ZF21 | 150x9 150x10 | 2 1 | | | SNZ SSNZ 317 | 85 | 75 | 95 | 180 | 380 | 110 | 40 | 70 | 112 | 155 | 218 | 320 | M24 | 1317 2317 | 21317 22317 | AN17 | AW17 | ZF17 | ZF21 | 180x14.5 180x10 | 2 1 | | | | | | |
| SNZ SSNZ 218 | 90 | 80 | 100 | 160 | 345 | 100 | 35 | 62 | 4 | 100 | 145 | 195 | 290 | M20 | 1218 2218 | 22218 23218 | AN18 | AW18 | ZF18 | ZF22 | 160x16.2 160x11.2 160x10 | 2 1 | | | SNZ SSNZ 318 | 90 | 80 | 100 | 190 | 400 | 110 | 33 | 74 | 112 | 160 | 230 | 320 | M24 | 1318 2318 | 21318 22318 | AN18 | AW18 | ZF18 | ZF22 | 190x15.5 190x10 | 2 1 | | | | | |
| SNZ SSNZ 219 | 95 | 85 | 110 | 170 | 345 | 100 | 35 | 53 | 112 | 140 | 210 | 290 | M20 | 1219 2219 | - 22219 | AN19 | AW19 | ZF19 | ZF24 | 170x10.5 170x10 | 2 1 | | | SNZ SSNZ 319 | 95 | 85 | 110 | 200 | 420 | 120 | 36 | 77 | 125 | 170 | 245 | 350 | M24 | 1319 2319 | 21319 22319 | AN19 | AW19 | ZF19 | ZF24 | 200x16 200x10 | 2 1 | | | | | | |
| SNZ SSNZ 220 | 100 | 90 | 115 | 180 | 380 | 110 | 40 | 70 | 3 | 112 | 160 | 218 | 320 | M24 | 2220 - | 22220 23220 | AN20 | AW20 | ZF20 | ZF26 | 180x12.1 180x10 | 2 1 | | | SNZ SSNZ 320 | 100 | 90 | 115 | 215 | 420 | 120 | 38 | 83 | 140 | 175 | 280 | 350 | M24 | 1320 2320 | 21320 22320 | AN20 | AW20 | ZF20 | ZF26 | 215x18 215x10 | 2 1 | | | | | |
| SNZ SSNZ 222 | 110 | 100 | 125 | 200 | 410 | 120 | 45 | 80 | 125 | 175 | 240 | 350 | M24 | 2222 - | 22222 23222 | AN22 | AW22 | ZF22 | ZF28 | 200x13.5 200x10 | 2 1 | | | SNZ SSNZ 322 | 110 | 100 | 125 | 240 | 460 | 130 | 40 | 90 | 150 | 190 | 300 | 390 | M24 | - | 22322 | AN22 | AW22 | ZF22 | ZF28 | 240x20 240x10 | 2 1 | | | | | | |
| SNZ SSNZ 224 | 120 | 110 | 135 | 215 | 410 | 120 | 45 | 86 | 140 | 185 | 270 | 350 | M24 | 2224 23224 | - 23224 | AN24 | AW24 | ZF24 | ZF30 | 215x14 215x10 | 2 1 | | | SNZ SSNZ 324 | 120 | 110 | 135 | 260 | 540 | 160 | 50 | 96 | 160 | 205 | 325 | 450 | M30 | - | 22324 | AN24 | AW24 | ZF24 | ZF30 | 260x10 | 1 | | | | | | |
| SNZ SSNZ 226 | 130 | 115 | 145 | 230 | 445 | 130 | 50 | 90 | 150 | 190 | 290 | 380 | M24 | 2226 23226 | - 23226 | AN26 | AW26 | ZF26 | ZF33 | 230x13 230x10 | 2 1 | | | SNZ SSNZ 326 | 130 | 115 | 150 | 280 | 560 | 160 | 50 | 103 | 170 | 215 | 350 | 470 | M30 | - | 22326 | AN26 | AW26 | ZF26 | ZF34 | 280x10 | 1 | | | | | | |
| SNZ SSNZ 229 | 140 | 125 | 155 | 250 | 500 | 150 | 50 | 98 | 150 | 205 | 305 | 420 | M30 | 2228 23228 | - 23228 | AN28 | AW28 | ZF28 | ZF35 | 250x15 250x10 | 2 1 | | | SNZ SSNZ 328 | 140 | 125 | 160 | 300 | 630 | 170 | 55 | 112 | 180 | 235 | 375 | 520 | M30 | - | 22328 | AN28 | AW28 | ZF28 | ZF36 | 300x10 | 1 | | | | | | |
| SNZ SSNZ 230 | 150 | 135 | 165 | 270 | 530 | 160 | 60 | 106 | 160 | 220 | 325 | 450 | M30 | 2230 23230 | - 23230 | AN30 | AW30 | ZF30 | ZF37 | 270x16.5 270x10 | 2 1 | | | SNZ SSNZ 330 | 150 | 135 | 170 | 320 | 680 | 180 | 55 | 118 | 190 | 245 | 395 | 560 | M30 | - | 22330 | AN30 | AW30 | ZF30 | ZF38 | 320x10 | 1 | | | | | | |
| SNZ SSNZ 232 | 160 | 140 | 175 | 290 | 550 | 160 | 60 | 114 | 170 | 235 | 345 | 470 | M30 | 2232 23232 | - 23232 | AN32 | AW32 | ZF32 | ZF39 | 290x17 290x10 | 2 1 | | | SNZ SSNZ 332 | 160 | 140 | 180 | 340 | 710 | 190 | 60 | 124 | 200 | 255 | 415 | 580 | M36 | - | 22332 | AN32 | AW32 | ZF32 | ZF40 | 340x10 | 1 | | | | | | |

