

www.ubc-bearing.com



QR code to visit UBC website



Discover **UBC**

UBC Precision Bearing Mfg. Co., Ltd.

An **IKO** Company



An **IKO** Company

UBC Precision Bearing Mfg. Co.,Ltd.

Suite 1703, Zhongrong Plaza, 1088 South Pudong Road, Pudong New District, Shanghai
TEL : +86-21-64904536
FAX : +86-21-68781355
Email: export@ubc-bearing.com

China factory and Technology Center

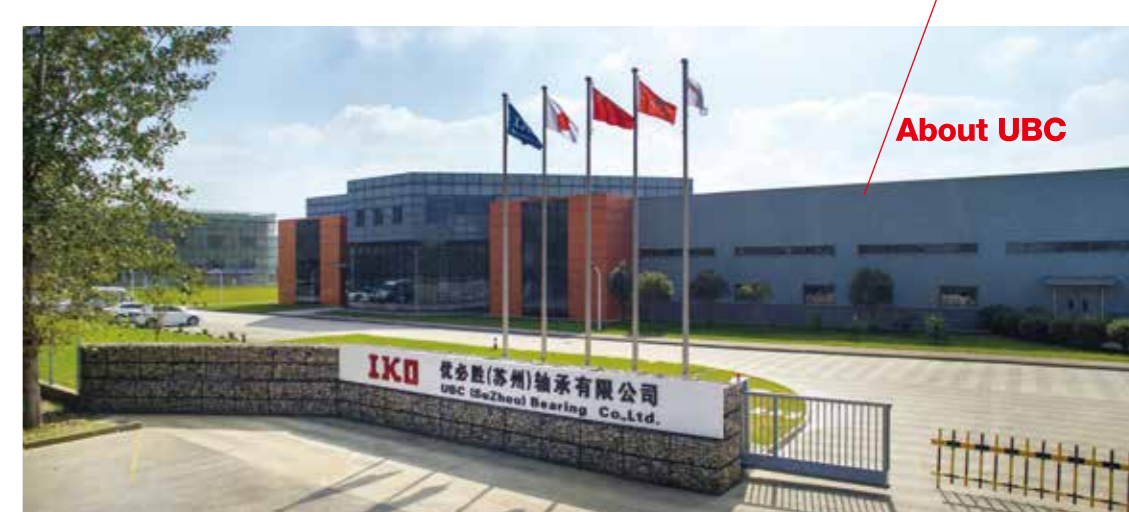
UBC (Suzhou) Bearing Co.,Ltd.

1083 Southeast Avenue, Changshu National New & Hi-tech Industrial Development Zone, Changshu City, Jiangsu Province, China

Discover UBC Overview

- About UBC
- Advanced Technology
- Excellent Service
- Bearing Products
- Worldwide Presence





UBC Precision Bearing Co., Ltd. (UBC) is a 100% subsidiary company of a Japanese public company - Nippon Thompson Co., Ltd. (products branded as IKO) – a world leading company established in 1950 specialized in needle roller bearings and linear motion products.

UBC is a manufacturer of both standard ball and roller bearings for OEMs and aftermarket as well as special designed bearings for applications with harsh working conditions, covering a full range of bearings.

With good and reliable quality, positioned to be a premium economy brand in the market, UBC has provided perfect solutions to end users who has cost down requirement but without too much compromise on quality.

Our factory is located in Shzhou.China with ISO 9001 and IATF 16949 certified by SGS together with Japanese quality control.

Our main serviced industry sectors includes:

1. Off-highway vehicles: construction machineries, agriculture machineries, forklift, heavy-duty trucks;
2. Power transmission: gearbox and speed reducer, axle, air compressor and pump;
3. High-precision applications: robotics, machine tools, medical equipment;
4. Heavy industry applications: pulp & paper, steel, mining, power generation, sugar mills, etc.

Our bearings, your solution.

For more information about UBC, please visit our website at www.ubc-bearing.com

About UBC Manufacturing

UBC SHANGHAI SALES HEADQUARTERS

Since 2002, UBC group has established its sales headquarters in Shanghai - China's financial center - to expand its business worldwide. Years of accumulated experience in the bearing industry has given UBC the advantage of know-how and necessary expertise for the development and production of technological value-added bearings particularly for the power transmission industry like gearbox and speed reducer, robots, air compressors and pumps, heavy industry applications in construction machinery, cranes, oil & gas, steel, mining, power generation, sugar mills, etc.

In January 2017, UBC was acquired and became a 100% subsidiary of IKO Nippon Thompson Group of Japan, a world leading manufacturer of Needle Roller Bearing and Linear Motion Rolling Guides and Components. Making the most of IKO's know-how and its resources, UBC has significantly boosted its performance, brand awareness and recognition worldwide.



UBC FACTORY AND TECHNICAL CENTER Suzhou, Jiangsu Province

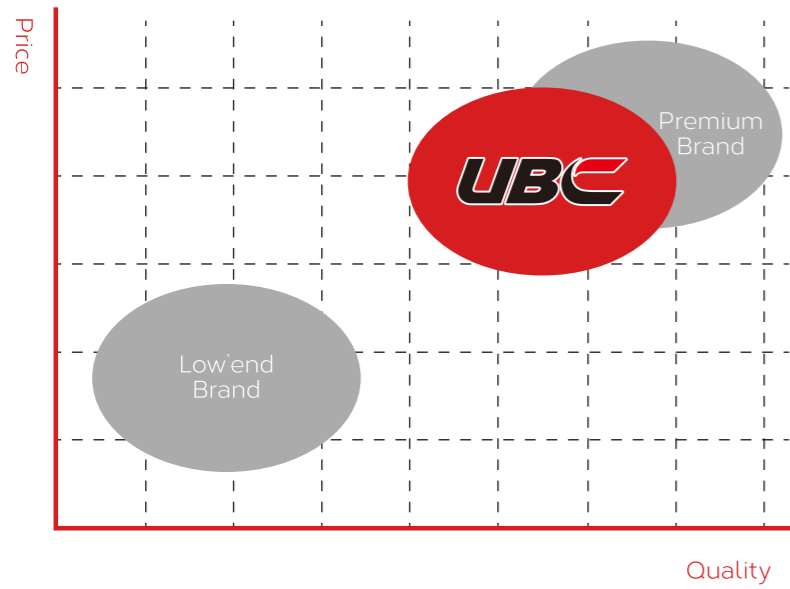
UBC has established its R&D and manufacturing base in Changshu National New & Hi-tech Industrial Development Zone, Suzhou with an occupied area of 38,000 square meters.

UBC's R&D Center brings a comprehensive change to UBC, enabling UBC to better cater to the rapidly growing customer demands for bearing designs and manufacturing technologies.

Roller bearings are of the main products produced in UBC's Suzhou factory, mainly serving the industry sectors of air compressor, RV speed reducer for robot, gearbox, axle, pitch & yaw for wind turbine, construction machinery as well as other heavy industries.

All the UBC products are strictly quality controlled and inspected before delivery to customers.

About UBC Position



UBC Cost-efficient Advantage

We have the experience, capability and know how to provide value-added solutions for our customers' bearings requirements.

With a strong engineering and problem solving background, UBC has become the provider of choice for many of the major equipment manufacturers across the world. UBC provides cost effective & high quality alternative to premium bearing manufacturers' products.



UBC's expertise in material selection is complemented by know-how heat treatment technology. True characteristics of the bearing material come out after bearing subject to heat treatment. Proper temperature and timing is maintained during the process so as to maximize the full potential of the bearing material.

Heat Treatment

Raw Material

UBC focuses on material selection for bearing design. The right material for the right application.

Rolling Elements

Selection of steel balls and rollers is essential in bearing design as it greatly affects bearing life.

Lubricants

Most suitable lubricant is selected as per different applications.



Advanced Technology Design Focus

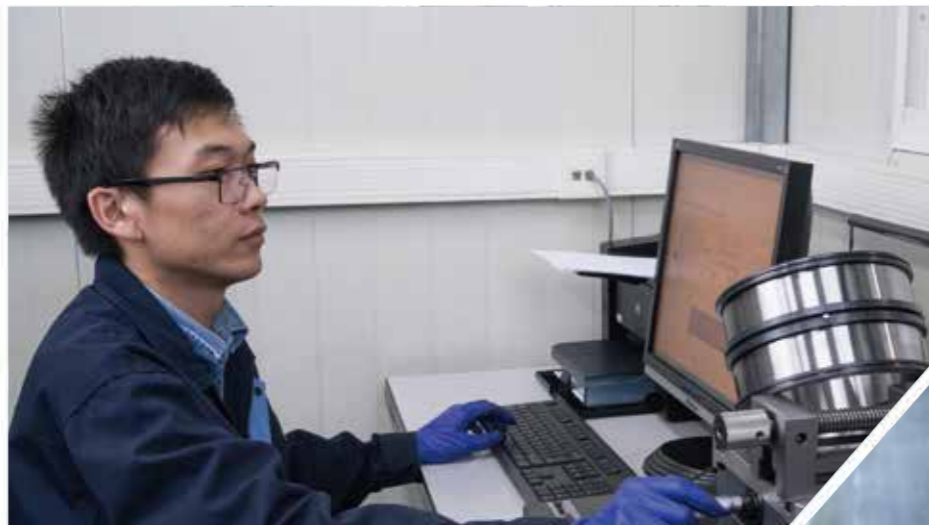
UBC introduces most advanced production arts using the hard-turning technology instead of the traditional grinding. This new production arts gives UBC bearings to have a significantly longer life under loads and also have reduced noise and friction thanks to the improved contact between the rollers and the ribs. This is certainly an interesting combination when considering downsizing and increasing energy efficiency.

Advanced Technology Quality Standards and Controls

UBC manufactures all of its bearings in conformity with the related international standards in its modern plants that are ISO 9001 : 2015 and IATF 16949 : 2016 certified and audited & approved by its key clients.



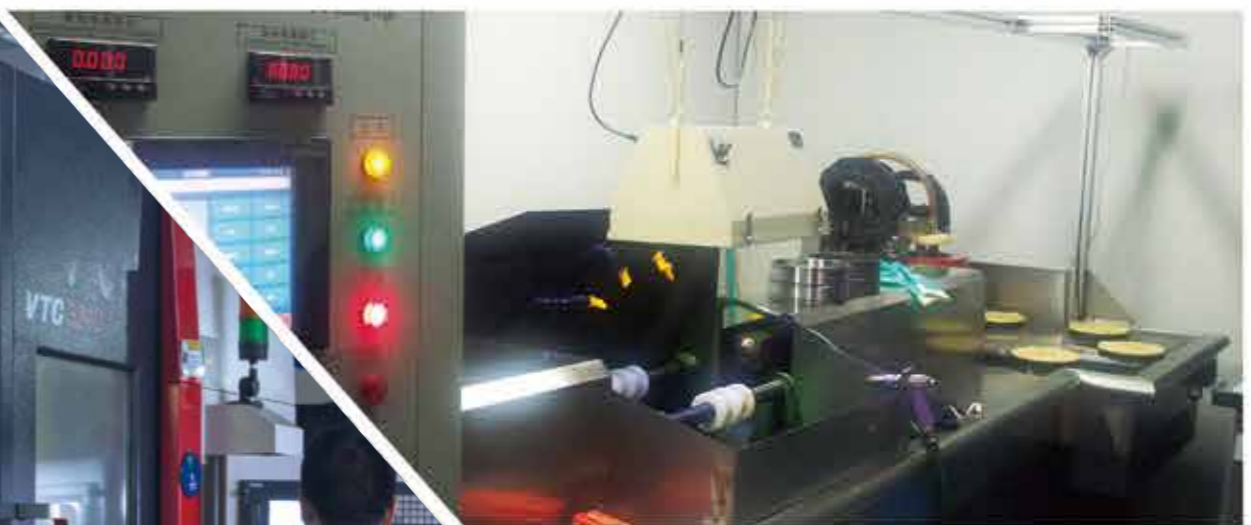
MARH PROFILE METER



MITUTOYO ROUNDNESS TESTER



FLUORESCENT MAGNETIC PARTICLE TESTING MACHINE



ZEISS METALLOSCOPE



Excellent Service Service Process

UBC “one-on-one” means clearer communication, better support, and faster solutions. One-on-one means better insight on how to provide better services, and clearer understanding of the customer’s requirements. UBC has a team of travelling technical representatives who can provide valuable consultation and on-site expertise to help arrange your custom-built requirements. UBC believes that a personalized approach leads to increased customer loyalty, and better productivity on both sides, and is a cornerstone of our growth strategy and corporate culture.

Think “one-on-one” Think “human touch”

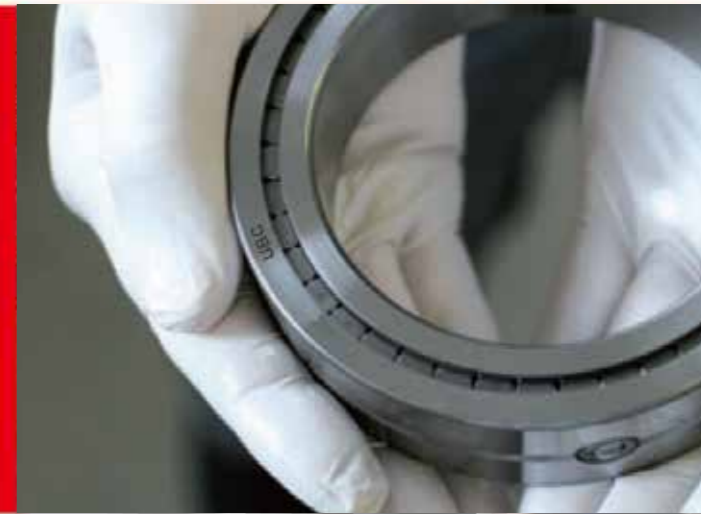
01 Why Choose UBC?

When it comes to providing highly engineered products that improve productivity and efficiency for industrial applications worldwide, UBC is the most reliable in the industry. Commitment to customer satisfaction and superior value extend across every business function.



03 Valuable Expertise

An extensive product offering is accompanied by global sales specialists, customer service and maintenance support teams, available anytime



02 Delivering Lowest Total Cost of Bearings

The highest quality products are designed to help prevent equipment downtime and increase productivity and dependable operation.

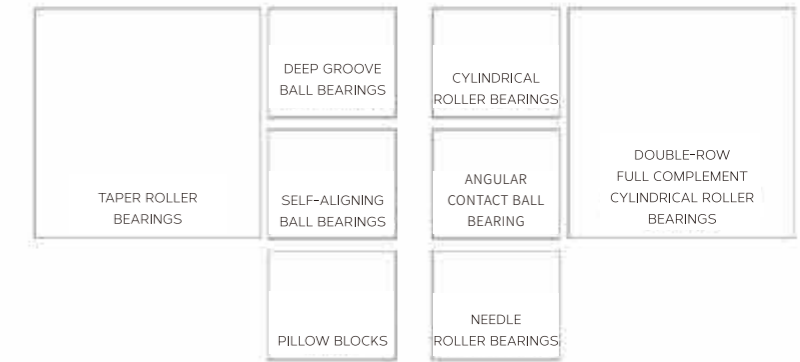


04 Solutions to Enhance Ease of Doing Business

Commitment to operational excellence ensures the right products at the right place at the right time.



Bearing Products Comprehensive Range



▲ TAPER ROLLER BEARINGS

Through years of research, UBC has achieved great breakthrough on improving the bearing load ratings and service life, especially the optimization for roller contact with the inner ring rib on tapered roller bearings. The realization of logarithmic curve profiles for raceways and rollers enabled a big increase on bearing service life. Batch inspection on bearing precision as well as raw materials insures the stable quality of UBC products.

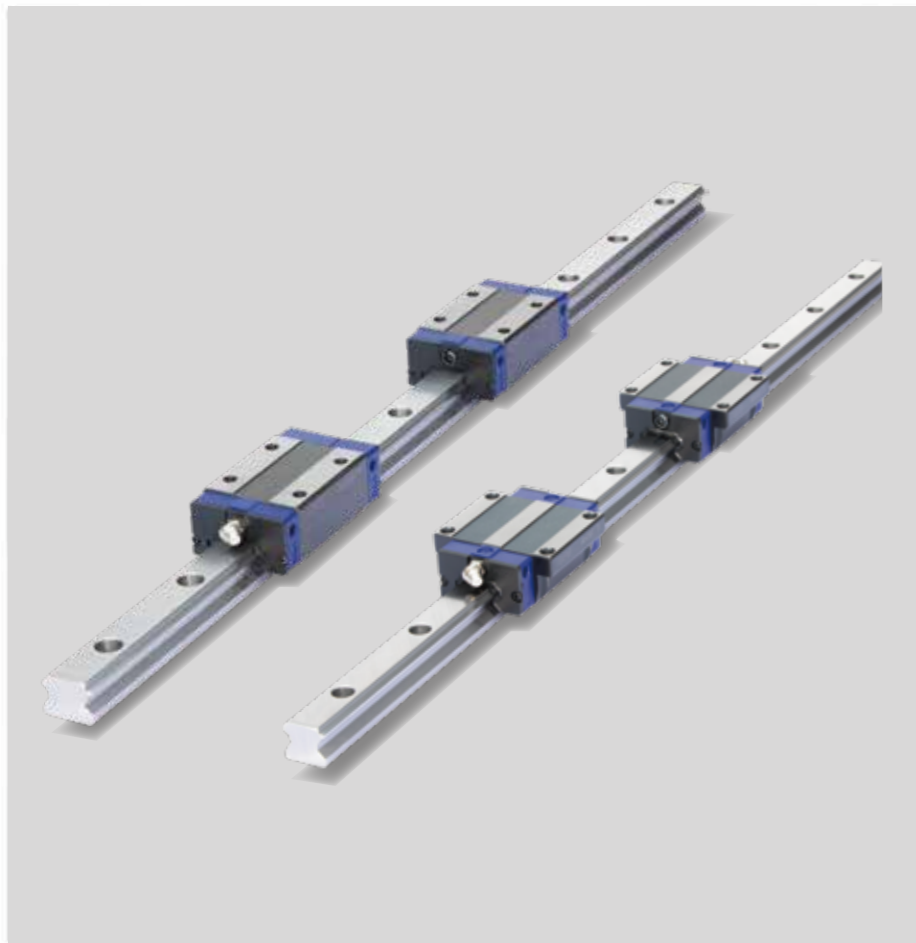
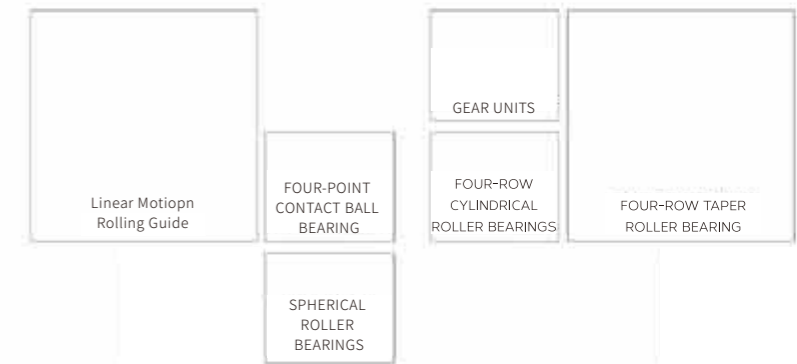


▲ DOUBLE-ROW FULL COMPLEMENT CYLINDRICAL ROLLER BEARINGS

- Special design allowed better concentricity of the two outer rings, and better parallel deviation of the two ribs of outer rings
- Suitable for extremely high radial Loads
- Increased axial load carrying capacity
- Increased performance while maintaining the same costs
- Won several industry recognition awards
- Refers to the "2013 Ringier Technology Innovation metalworking industry * Outstanding Supplier Award" and the "2013 China Innovation Pioneer equipment * Special"



Bearing Products Comprehensive Range



◀AXPB Linear Motion Rolling Guides

- Arc groove design raceway, with automatic adjustment function, can absorb misalignment, to achieve high precision and stable linear motion.
- The 45° contact angle design allows any arrangement methods.
- The AXPB normal precision grade linear rails and sliders, features interchangeability of free combination in case of same preload.
- Interchangeable to most popular brands in the market.



FOUR-ROW TAPERED ROLLER BEARINGS▲

Sealed type four-row tapered roller bearings mainly used for work rolls or intermediate rolls, carry both of radial load and axial load at a time. Adjustment of internal clearance is not required, which facilitated installation. Open type is also available.

- High Load Capacity
- Substantial reduction in grease consumption compared to open type
- Extension of maintenance and cleaning intervals
- Prevention of intrusion of mill scale
- Reduction in harmful effects on working environment

Worldwide Presence

Industry Solutions





CYLINDRICAL ROLLER BEARINGS

SUPER PRECISION
ANGULAR CONTACT BALL BEARINGS

DEEP GROOVE BALL BEARINGS

THRUST BALL BEARINGS



TAPERED ROLLER BEARINGS

SPHERICAL ROLLER BEARINGS

DEEP GROOVE BALL BEARINGS

FULL-COMPLEMENT CYLINDRICAL
ROLLER BEARINGS



Worldwide Presence Pumps and Compressors

Pumps are widely used in various industries, such as petrochemical, paper, irrigation, food processing and beverage processing.

Compressors are also a key essential component of factory equipment, ventilation, air conditioner, refrigerators and refrigeration storage.

UBC bearings with optimized internal design has greatly improved its load capacity and bearing life. Our aim is reliable quality, environmental friendly, low-energy, reduced cost.



Worldwide Presence Power Transmission Industrial Gearboxes

Due to its high power density and high load, power transmission industry needs to adopt bearings of the highest quality, improved performance and cost-effectiveness.

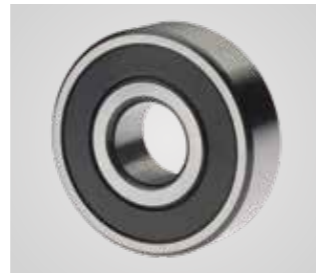
UBC selects suitable bearings with adequate precision level based on the actual application position operation conditions and environmental conditions to ensure bearing life and reliability.



TAPERED ROLLER BEARINGS



NEEDLE ROLLER BEARINGS



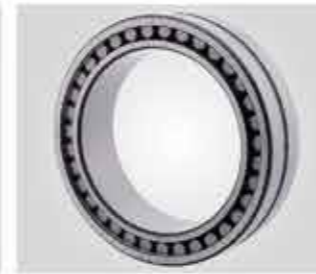
DEEP GROOVE BALL BEARINGS



PILLOW BLOCKS



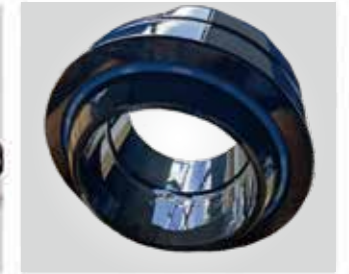
DOUBLE-ROW
FULL COMPLEMENT BEARINGS
FOR CRANE SHEAVES



CYLINDRICAL ROLLER BEARINGS



TAPERED ROLLER BEARINGS



SPHERICAL PLAIN BEARINGS



Worldwide Presence Agriculture Machinery

As a reliable brand and supplier, UBC has been enjoying a good reputation and customer base in the agricultural machinery industry.

UBC deep groove ball bearings, tapered roller bearings, pillow blocks, needle roller bearings, cylindrical roller bearings, are widely used in tractors, harvesters, planter's axles and gearbox for different applications.



Worldwide Presence Construction Machinery

The excellent quality of UBC's full-complement cylindrical roller bearings that especially designed for pulley of construction machinery, ensures the continuous and stable operation of equipment in harsh environment, minimizing the cost investment and possible economic losses caused by equipment maintenance or downtime, and ensuring the safety of construction.

UBC's NNF series bearings are designed and produced with advanced innovative technology, which perfectly assured the concentricity of two raceways and parallelism of the four ribs.

Construction machineries are hydraulically driven, so hydraulic cylinder is an essential part. UBC's spherical plain bearings are well performed in the hydraulic cylinders in each end.



FOUR-ROW CYLINDRICAL ROLLER BEARINGS FOR BACK UP ROLLS

SEALED TYPE FOUR-ROW TAPERED ROLLER BEARINGS

SPHERICAL PLAIN BEARINGS

THRUST SPHERICAL ROLLER BEARINGS



Worldwide Presence

Steel and Metals

Steel production equipment are operated in extremely harsh environments, where machinery is exposed to high temperatures, water and mill scale. The bearings used in this equipment must continually withstand heavy loads, severe eccentricity, and wide range of rotation speed.

Our products with excellent quality are designed to ensure continuous and stable operation of the equipment in such harsh conditions, minimizing the cost investment in parts and economical losses caused by equipment maintenance or downtime, and ensuring the safety of equipment and workers.



SPHERICAL ROLLER BEARINGS

PILLOW BLOCKS

GEAR UNIT

DEEP GROOVE BALL BEARINGS



Worldwide Presence

Mining, mineral processing and Cement

In fully mechanized mining equipment, 70% to 80% of the accidents are concentrated in shearers, while 50% of the accidents of shearers are due to mechanical faults caused by bearing failure and gear damage.

UBC bearings developed for various coal machineries, represent this industry's leading anti-wear and endurance performance. UBC bearings used in key parts have realized high reliability and high load capacity, significantly reduce the damage rate of bearings. Easy for installation and excellent impact load resistance are of two additional features of UBC bearings. Good lubrication and sealing performance, ensure smaller friction coefficient, greatly prolonged bearing service life.



SPHERICAL ROLLER BEARINGS

DEEP GROOVE BALL BEARINGS

CYLINDRICAL ROLLER BEARINGS



TAPERED ROLLER BEARINGS

CYLINDRICAL ROLLER BEARINGS

DEEP GROOVE BALL BEARINGS

SPHERICAL ROLLER BEARINGS



Worldwide Presence Sugar Mill

The environment of the sugar mill is very harsh and the requirements for bearings are relatively high. It requires bearings can withstand dirt, water, dust, high temperature, heavy loads, etc.

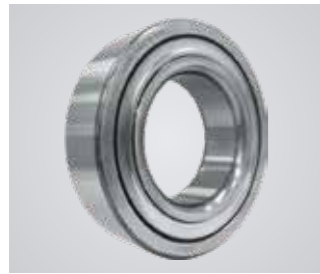
Despite the harsh working environment of the bearing, the production line of the sugar factory often does not allow any pauses in the production process, and the maintenance period of the sugar factory is also very limited, so these realities require high reliability of the bearing and ready delivery.

The special production process adopted by UBC bearings ensures the bearing life and load capacity. UBC's well-established dealer network and their adequate inventory also respond well to the sugar mill's need for timely delivery.



Worldwide Presence Wind Power

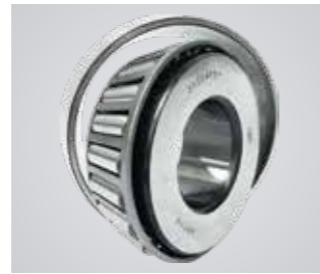
Through years of exploration, for tapered roller bearings, UBC has made a major breakthrough especially on the contact between the larger end face of the rollers and the big rib of inner ring, which has significantly prolonged the bearing life. UBC has also realized logarithmic curve trimming on inner ring raceway, outer ring raceway, and rollers of its tapered roller bearings, which also contributes to longer bearing life.



WIDE SERIES DEEP GROOVE BALL BEARINGS



NEEDLE ROLLER BEARINGS



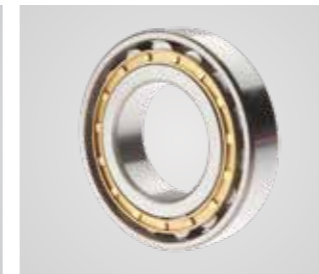
TAPERED ROLLER BEARINGS



TENSIONER BEARINGS



TAPERED ROLLER BEARINGS



CYLINDRICAL ROLLER BEARINGS



SPHERICAL ROLLER BEARINGS



PILLOW BLOCKS



Worldwide Presence Vehicle

The UBC wide series deep groove ball bearings that jointly developed by UBC and a leading premium brand, are especially designed for application of transmission shaft of heavy trucks. Typical features including, extended inner ring and outer ring, much improved sealing performance by double sealing structure, filled with high temperature grease, minimized friction torque.

The UBC wide series deep groove ball bearings are very welcomed by leading truck manufacturers due to UBC bearings' maintenance-free, extended bearing life and zero-defect.



Worldwide Presence Power Plant

UBC bearings with advanced design ensures better performance and longer service life in harsh and high-pressure environment of thermal power generation.

The bearings incorporate a variety of specific technologies, higher purity steel is selected, better surface finish and special internal geometry design is adopted.

From gearboxes to grind rolls to separators and fans, UBC's extensive experience in designing solutions delivers longer service life, reduced maintenance time - increased uptime and improved equipment performance.



TAPERED ROLLER BEARINGS

CROSS ROLLER BEARINGS

DEEP GROOVE BALL BEARINGS

NEEDLE ROLLER BEARINGS

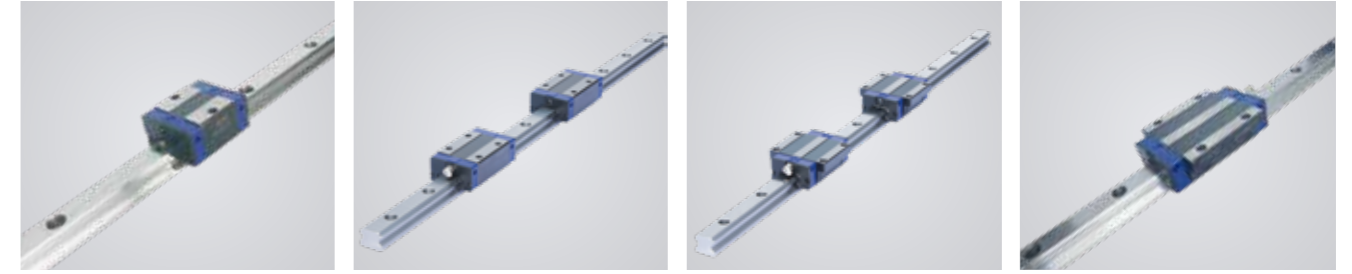


Worldwide Presence

Smart Robot

UBC has developed the fifth generation small sizes tapered roller bearings designed and manufactured for robot RV. For development of this product, UBC customized multiple experimental equipment to imitate the working characteristics of robot. classified special experiments, and summarized several technical requirements for extending bearing life.

Cross roller bearings and needle roller bearings for RV reducers are also within UBC's supply range.



AE 15SK T1

AE 25S T1

AH 20T T1

AH 20G T1



Worldwide Presence

Linear Motion Rolling Guide

Arc groove design raceway, with automatic adjustment function, so as to absorb misalignment, to achieve high precision and stable linear motion.

The 45° contact angle of between each row of steel balls and the raceway of the linear rail, ensures same load on the slider from four directions, so that it can be used in any arrangement method.

The dimensions for assembly of both AXPB linear rails and sliders are of the same and interchangeable to most popular brands in the market.

The AXPB normal precision grade linear rails and sliders, features interchangeability of free combination in case of same preload.